

CORNER RECORD

Document Number A.P. 65-311-37

City of SAUSALITO

County of MARIN, California

Brief Legal Description PARCEL 1 PER 12 P.M. 13

CORNER TYPE

Government Corner Control

Meander Property

Rancho Other

Date of Survey 08/20/03

COORDINATES (Optional)

N. _____

E. _____

Zone _____ NAD27 NAD83

NAD83 Epoch _____

Elev. _____

Vert. Datum: NGVD29 NAVD88

Meas. Units: Metric Imperial

Corner- Left as found Found and tagged Established Reestablished Rebuilt

Identification and type of corner found: Evidence used to identify or procedure used to establish or reestablish the corner:
REESTABLISHED THE MONUMENTS FROM THE FOUND STREET MONUMENTS ON MARION AVENUE
PER 12 P.M. 13.

A description of the physical condition of the monument as found and as set or reset: SEE SHEET 2.

SURVEYOR'S STATEMENT

This Corner Record was prepared by me or under my direction in conformance with
the Land Surveyor's Act on AUGUST 20 2003

Signed Lawrence P. Doyle P.L.S. or R.C.E. No. P.L.S. 4694



COUNTY SURVEYOR'S STATEMENT

This Corner Record was received OCTOBER 2, 2003

and examined and filed OCTOBER 10, 2003

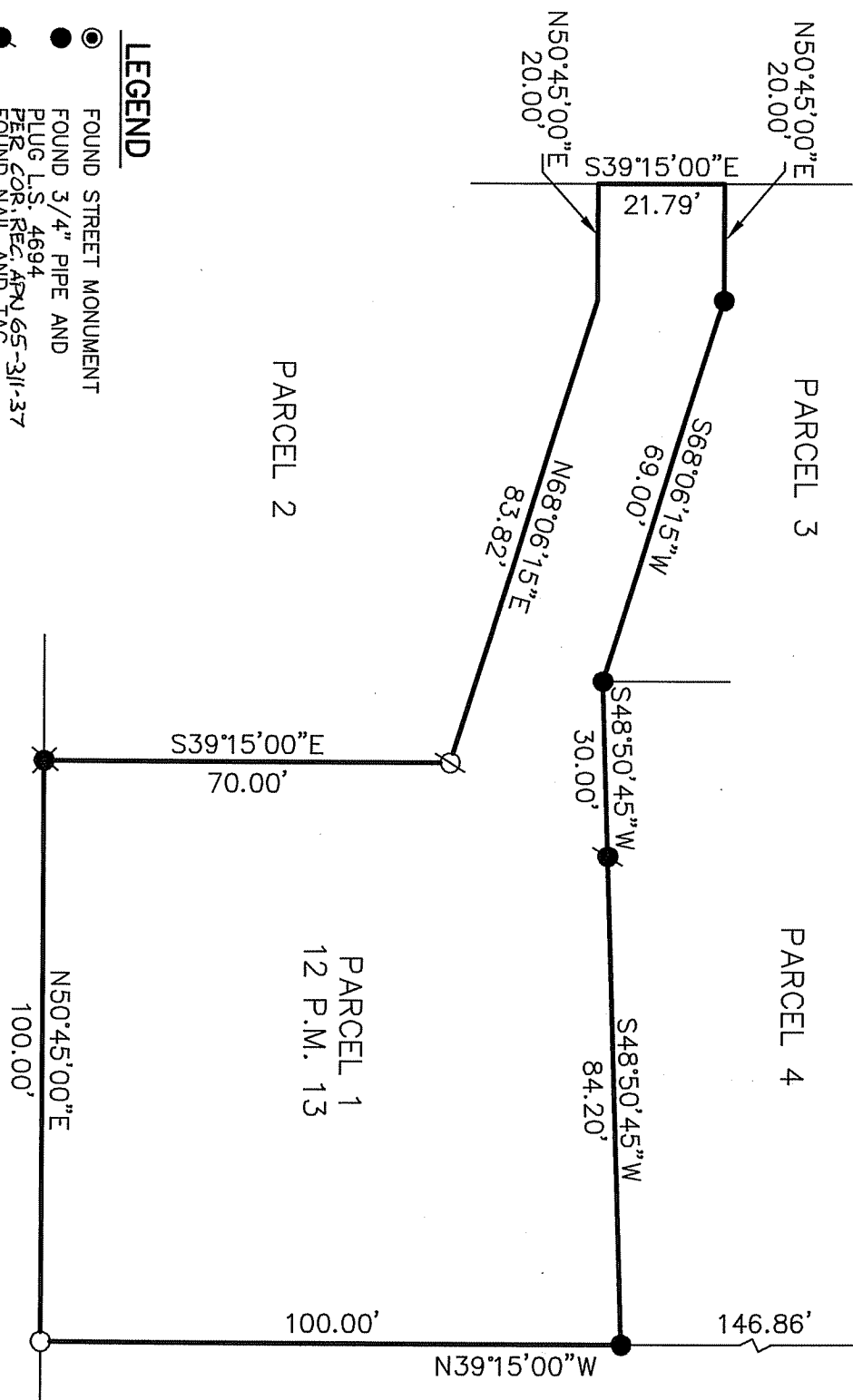
Signed [Signature] P.L.S. or R.C.E. No. 7128

Title COUNTY SURVEYOR

County Surveyor's Comment _____



M-205
 BASIS OF BEARING
 $S50^{\circ}56'55''W$
 180.00'
 MARION AVENUE
 M-204

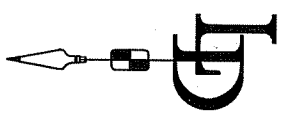


LEGEND

- FOUND STREET MONUMENT
- FOUND 3/4" PIPE AND PLUG L.S. 4694
- PER COR. REC. APN 65-311-37 FOUND NAIL AND TAG
- L.S. 4694 IN CONCRETE PER COR. REC. APN 65-311-37 FOUND 3/4" PIPE
- SET 3/4" PIPE AND PLUG L.S. 4694
- SET MAG NAIL AND TAG L.S. 4694 IN ASPHALT

BASIS OF BEARING

THE BASIS OF BEARING FOR THIS SURVEY IS $S50^{\circ}56'55''W$ BETWEEN TWO FOUND STREET MONUMENTS ON MARION AVENUE PER 12 P.M. 13.



CORNER RECORD	
PARCEL 1 / 12 P.M. 13	
MARIN COUNTY CALIFORNIA	
SAUSALITO	LAWRENCE P. DOYLE
LAND SURVEYOR/CIVIL ENGINEER	
P.O. BOX 1609 MILL VALLEY CA 94942 (415-388-9585)	
SCALE: 1" = 30'	DRAWN BY:
DATE: 3/6/03	SHEET 2 OF 2
	DRAWING NO. 1133-03