

# CORNER RECORD

Document Number A.P. 65-311-37

City of SAUSALITO

County of MARIN, California

Brief Legal Description PARCEL 1 PER 12 P.M. 13

### CORNER TYPE

Government Corner  Control

Meander  Property

Rancho  Other

Date of Survey 03/05/03

### COORDINATES (Optional)

N. \_\_\_\_\_

E. \_\_\_\_\_

Zone \_\_\_\_\_ NAD27  NAD83

NAD83 Epoch \_\_\_\_\_

Elev. \_\_\_\_\_

Vert. Datum: NGVD29  NAVD88

Meas. Units: Metric  Imperial

Corner- Left as found  Found and tagged  Established  Reestablished  Rebuilt

Identification and type of corner found: Evidence used to identify or procedure used to establish or reestablish the corner:  
REESTABLISHED THE MONUMENTS FROM THE FOUND STREET MONUMENTS ON MARION AVENUE  
PER 12 P.M. 13.

A description of the physical condition of the monument as found and as set or reset: SEE SHEET 2.

### SURVEYOR'S STATEMENT

This Corner Record was prepared by me or under my direction in conformance with  
the Land Surveyor's Act on MARCH 6 2003

Signed Lawrence P Doyle P.L.S. or R.C.E. No. P.L.S. 4694



### COUNTY SURVEYOR'S STATEMENT

This Corner Record was received APRIL 17, 2003

and examined and filed APRIL 22, 2003

Signed Cery P.L.S. or R.C.E. No. 7128

Title COUNTY SURVEYOR

County Surveyor's Comment \_\_\_\_\_



M-205

**BASIS OF BEARING**  
S50°56'55"W

180.00'

**MARION AVENUE**

M-204

N50°45'00"E  
20.00'

PARCEL 3

S39°15'00"E  
21.79'

S68°06'15"W  
69.00'

N50°45'00"E  
20.00'

N68°06'15"E  
83.82'

S48°50'45"W  
30.00'

S48°50'45"W  
84.20'

146.86'

N39°15'00"W

PARCEL 2

S39°15'00"E  
70.00'

PARCEL 1  
12 P.M. 13

N50°45'00"E  
100.00'

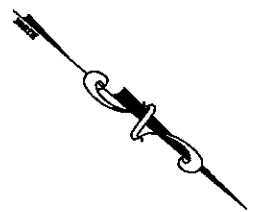
100.00'

**BASIS OF BEARING**

THE BASIS OF BEARING FOR THIS SURVEY IS S50°56'55"W BETWEEN TWO FOUND STREET MONUMENTS ON MARION AVENUE PER 12 P.M. 13.

**LEGEND**

- FOUND STREET MONUMENT
- SET 3/4" PIPE AND PLUG L.S. 4694
- ∅ SET NAIL AND TAG L.S. 4694 IN CONCRETE



SAUSALITO		CORNER RECORD	
DATE: 3/8/03		PARCEL 1 / 12 P.M. 13	
SCALE: 1" = 30'		MARIN COUNTY	
LAND SURVEYOR/CIVIL ENGINEER		CALIFORNIA	
<b>LAWRENCE P. DOYLE</b>		DRAWN BY:	
P.O. BOX 1609 MILL VALLEY, CA 94942 (415-388-9585)		SHEET 2 OF 2	
DRAWING NO. 1133-03			

# CORNER RECORD

Document Number A.P. 65-311-37

City of SAUSALITO

County of MARIN, California

Brief Legal Description PARCEL 1 PER 12 P.M. 13

### CORNER TYPE

Government Corner  Control   
 Meander  Property   
 Rancho  Other   
 Date of Survey 08/20/03

### COORDINATES (Optional)

N. \_\_\_\_\_  
 E. \_\_\_\_\_  
 Zone \_\_\_\_\_ NAD27  NAD83   
 NAD83 Epoch \_\_\_\_\_  
 Elev. \_\_\_\_\_  
 Vert. Datum: NGVD29  NAVD88   
 Meas. Units: Metric  Imperial

Corner- Left as found  Found and tagged  Established  Reestablished  Rebuilt

Identification and type of corner found: Evidence used to identify or procedure used to establish or reestablish the corner:

REESTABLISHED THE MONUMENTS FROM THE FOUND STREET MONUMENTS ON MARION AVENUE

PER 12 P.M. 13.

A description of the physical condition of the monument as found and as set or reset: SEE SHEET 2.

### SURVEYOR'S STATEMENT

This Corner Record was prepared by me or under my direction in conformance with

the Land Surveyor's Act on AUGUST 20 2003

Signed Lawrence P. Doyle P.L.S. or R.C.E. No. P.L.S. 4694



### COUNTY SURVEYOR'S STATEMENT

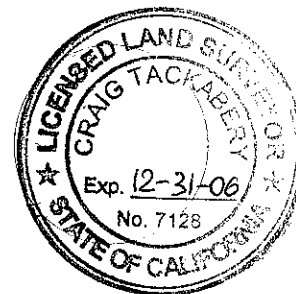
This Corner Record was received OCTOBER 2, 2003

and examined and filed OCTOBER 10, 2003

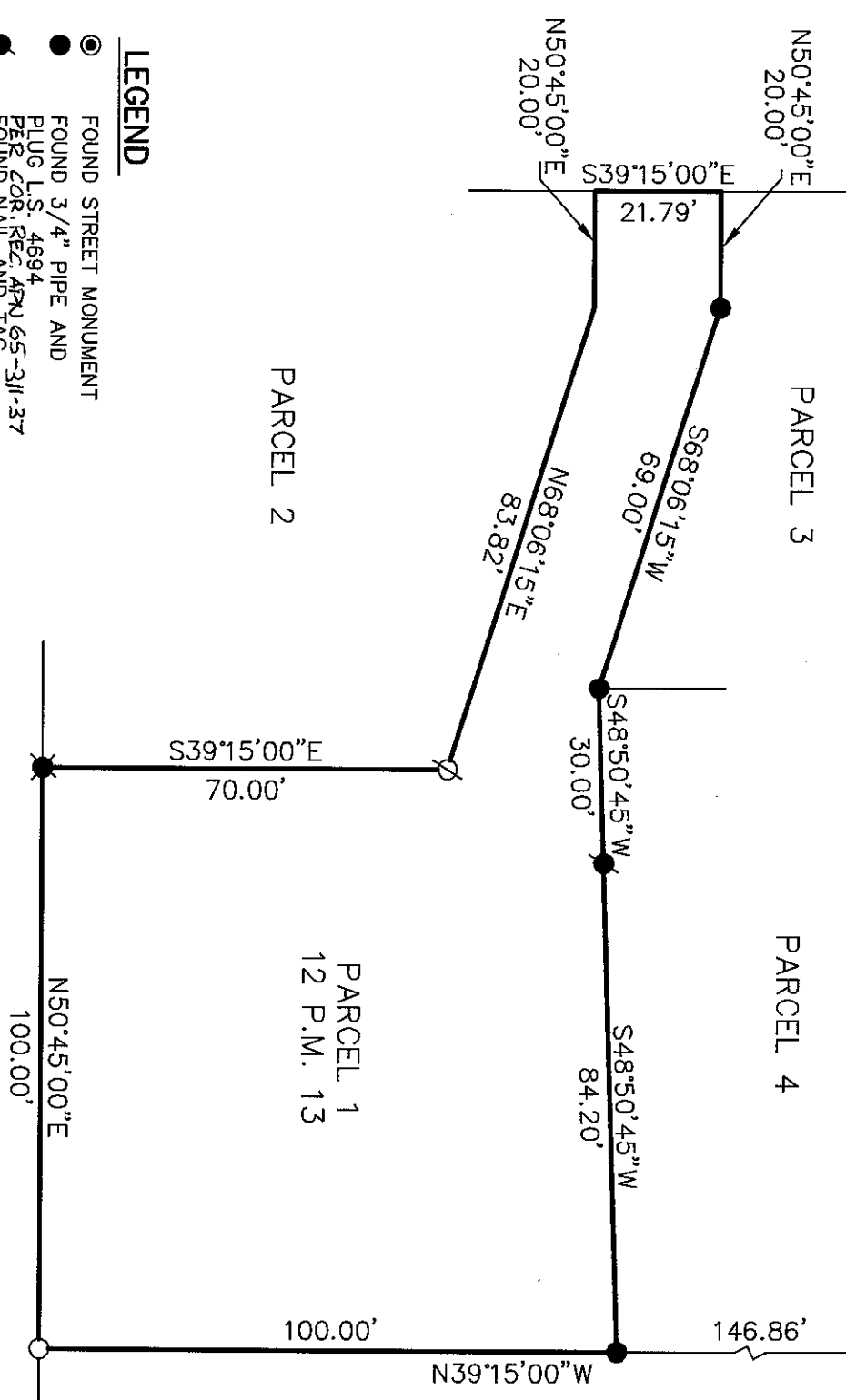
Signed [Signature] P.L.S. or R.C.E. No. 7128

Title COUNTY SURVEYOR

County Surveyor's Comment \_\_\_\_\_



M-205  
 BASIS OF BEARING  
 S50°56'55"W  
 180.00'  
 MARION AVENUE  
 M-204



- LEGEND**
- FOUND STREET MONUMENT
  - FOUND 3/4" PIPE AND PLUG L.S. 4694
  - PER COR. REC. APN 65-311-37
  - FOUND NAIL AND TAG
  - L.S. 4694 IN CONCRETE PER COR. REC. APN 65-311-37
  - FOUND 3/4" PIPE
  - SET 3/4" PIPE AND PLUG L.S. 4694
  - SET MAG NAIL AND TAG L.S. 4694 IN ASPHALT

**BASIS OF BEARING**

THE BASIS OF BEARING FOR THIS SURVEY IS S50°56'55"W BETWEEN TWO FOUND STREET MONUMENTS ON MARION AVENUE PER 12 P.M. 13.



<b>CORNER RECORD</b>	
PARCEL 1 / 12 P.M. 13	
MARIN COUNTY CALIFORNIA	
<b>LAWRENCE P. DOYLE</b>	
LAND SURVEYOR/CIVIL ENGINEER	
P.O. BOX 1609 MILL VALLEY CA 94942 (415-388-9585)	
SCALE: 1" = 30'	DRAWN BY:
DATE: 3/6/03	SHEET 2 OF 2
DRAWING NO. 1133-03	