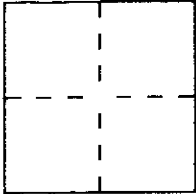


CORNER RECORD

Document Number A.P.# 65-303-37,38

City of SAUSALITO, CA County of MARIN, California

Brief Legal Description APN 65-303-32 37 & 38



CORNER TYPE

Government Corner Control
Meander Property
Rancho Other
Date of Survey _____

**COORDINATES
(Optional)**

N. _____
E. _____
Zone _____ Datum _____
Elev. _____

Corner — Left as found Found and tagged Established Reestablished Rebuilt

Identification and type of corner found: Evidence used to identify or procedure used to establish or reestablish the corner:

RECORD MAPS & FOUND CORNERS
18 MAPS 73 AND 19 P.M. 76

A description of the physical condition of the monument as found and as set or reset: _____

SEE SKETCH

SURVEYOR'S STATEMENT

This Corner Record was prepared by me or under my direction in conformance with the Land Surveyors' Act on 1/13 1994.

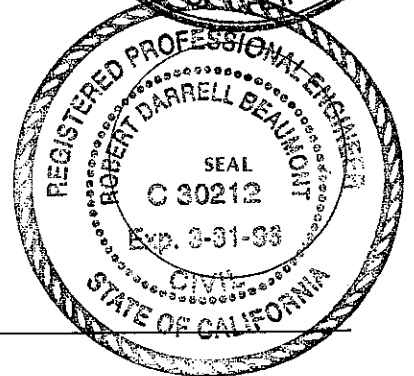
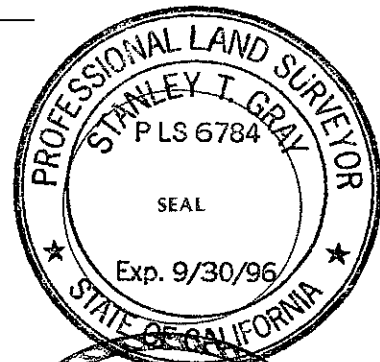
Signed [Signature] L.S. or R.C.E. Number PLS 6784

COUNTY SURVEYOR'S STATEMENT

This Corner Record was received January 21 1994 and examined and filed 1-21 1994.

Signed [Signature] Title DLS

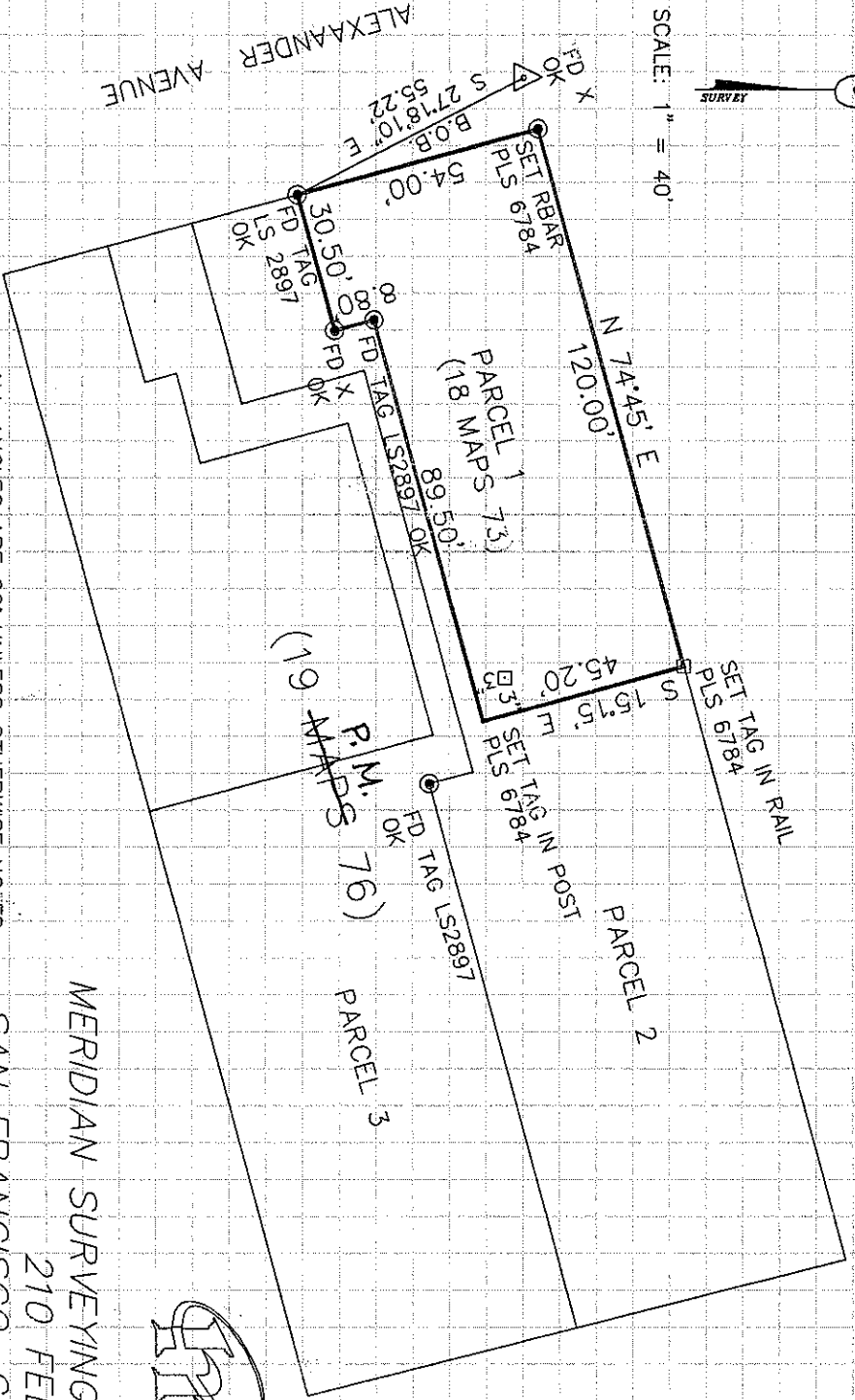
County Surveyor's Comment _____



CORNER RECORD
 A.P.N. 65-303-52 574 38
 SAUSALITO, MARIN COUNTY
 CALIFORNIA



SCALE: 1" = 40'



ALEXANDER AVENUE

CORNERS SET JULY, 1993

* ALL ANGLES ARE 90° UNLESS OTHERWISE NOTED.
 NOTE: REFER TO RECORD MAPS FOR EASEMENT DETAILS

MERIDIAN SURVEYING ENGINEERING, INC.
 210 FELL ST.
 SAN FRANCISCO, CALIFORNIA 94102
 (415) 861-3687

