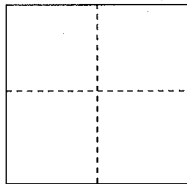


CORNER RECORD

Documented Number 065-293-06

City of Sausalito County of Marin, California

Brief Legal Description Being a portion of "Edward Harrison Tract" 1 -RM- 3



CORNER TYPE

Government Corner Control
 Meander Property
 Rancho Other

COORDINATES(Optional)

N. _____
 E. _____
 Zone _____ NAD27 NAD83
 NAD83 Epoch _____
 Elevation _____
 Vert. Datum: NGVD 29 NADV88
 Meas. Units: Metric Imperial

Date of Survey _____

Corner- Left as found Found and tagged Established Reestablished Rebuilt

Identification and type of corner found: Evidence used to identify or procedure used to establish or reestablish the corner:

See Page 2 of 2

A description of the physical condition of the monument as found and as set or reset: _____

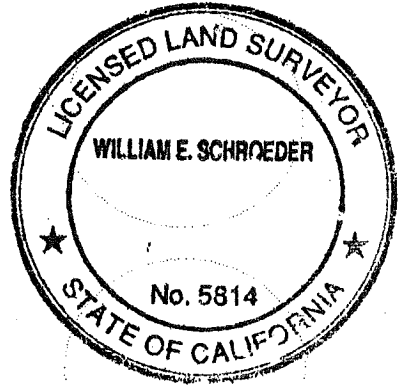
See Page 2 of 2

SURVEYOR'S STATEMENT

This Corner Record was prepared by me or under my direction in conformance with

the Land Surveyor's Act on 7/2/13

Signed William E. Schroeder P.L.S. or R.C.E. No.: 5814



COUNTY SURVEYOR'S STATEMENT

This Corner Record was received JULY 2, 2013 and examined

and filed AUGUST 1, 2013

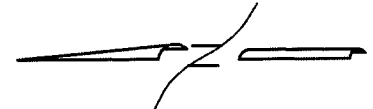
Signed Richard G. Simonitch P.L.S. or R.C.E. No.: 7821



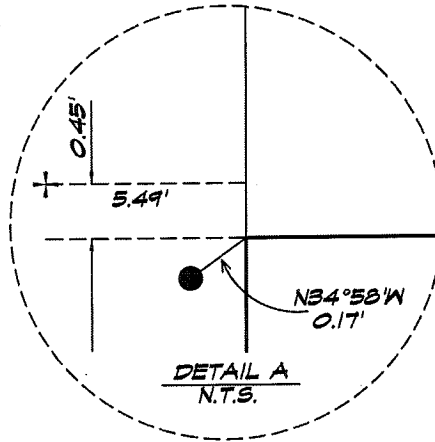
Title DEPUTY CO. SURVEYOR

County Surveyor's Comment _____

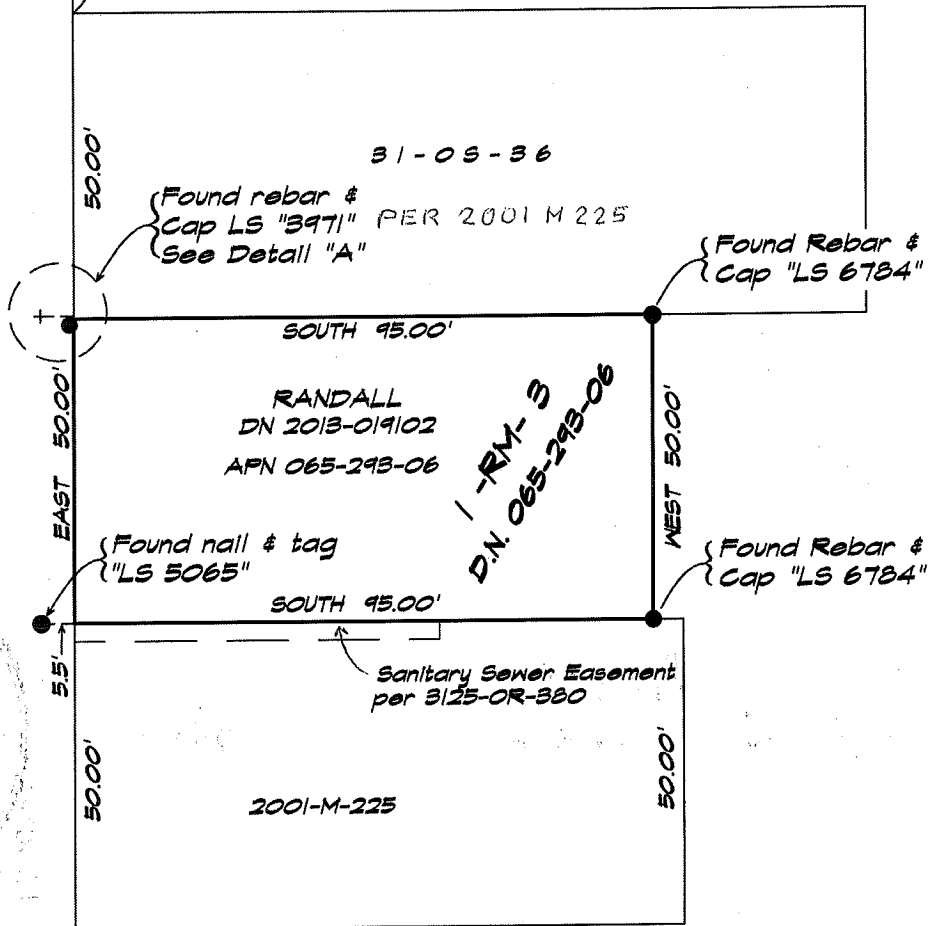
ALEXANDER AVENUE



SCALE: 1" = 30'



SOUTH STREET (50' R/W)



LEGEND:

- FOUND MONUMENTS AS NOTED
- + FOUND CUTS AS NOTED

REFERENCES:

1. EDWARD HARRISON TRACT 1 -RM- 3
2. RECORD OF SURVEY 31 -09- 36
3. RECORD OF SURVEY 01 -09- 225
4. CORNER RECORD D.N. 065-293-06

PREPARED BY
WILLIAM SCHROEDER & ASSOC.
 P.O. BOX 6801
 SAN RAFAEL, CA
 (415) 472-4759