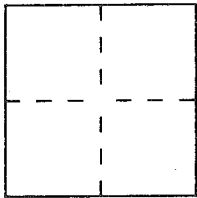


CORNER RECORD

Document Number 065-281-20

City of SAUSALITO County of MARIN, California

Brief Legal Description PORTION PARCEL B PER 8/5/9 & 18 RM 60, MCR



CORNER TYPE

Government Corner Control
Meander Property
Rancho Other
Date of Survey FEB 2014

COORDINATES (Optional)

N. _____
E. _____
Zone _____ Datum _____
Elev. _____

Corner — Left as found Found and tagged Established Reestablished Rebuilt

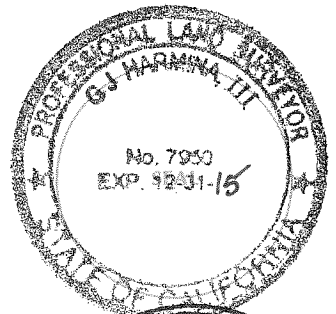
Identification and type of corner found: Evidence used to identify or procedure used to establish or reestablish the corner:
FOUND CITY OF SAUSALITO MONUMENT IN STREET.

A description of the physical condition of the monument as found and as set or reset: _____
SEE SHEET 2

SURVEYOR'S STATEMENT

This Corner Record was prepared by me or under my direction in conformance with the Land Surveyors' Act on FEBRUARY 13 2014

Signed [Signature] L.S. or R.C.E. Number 7950



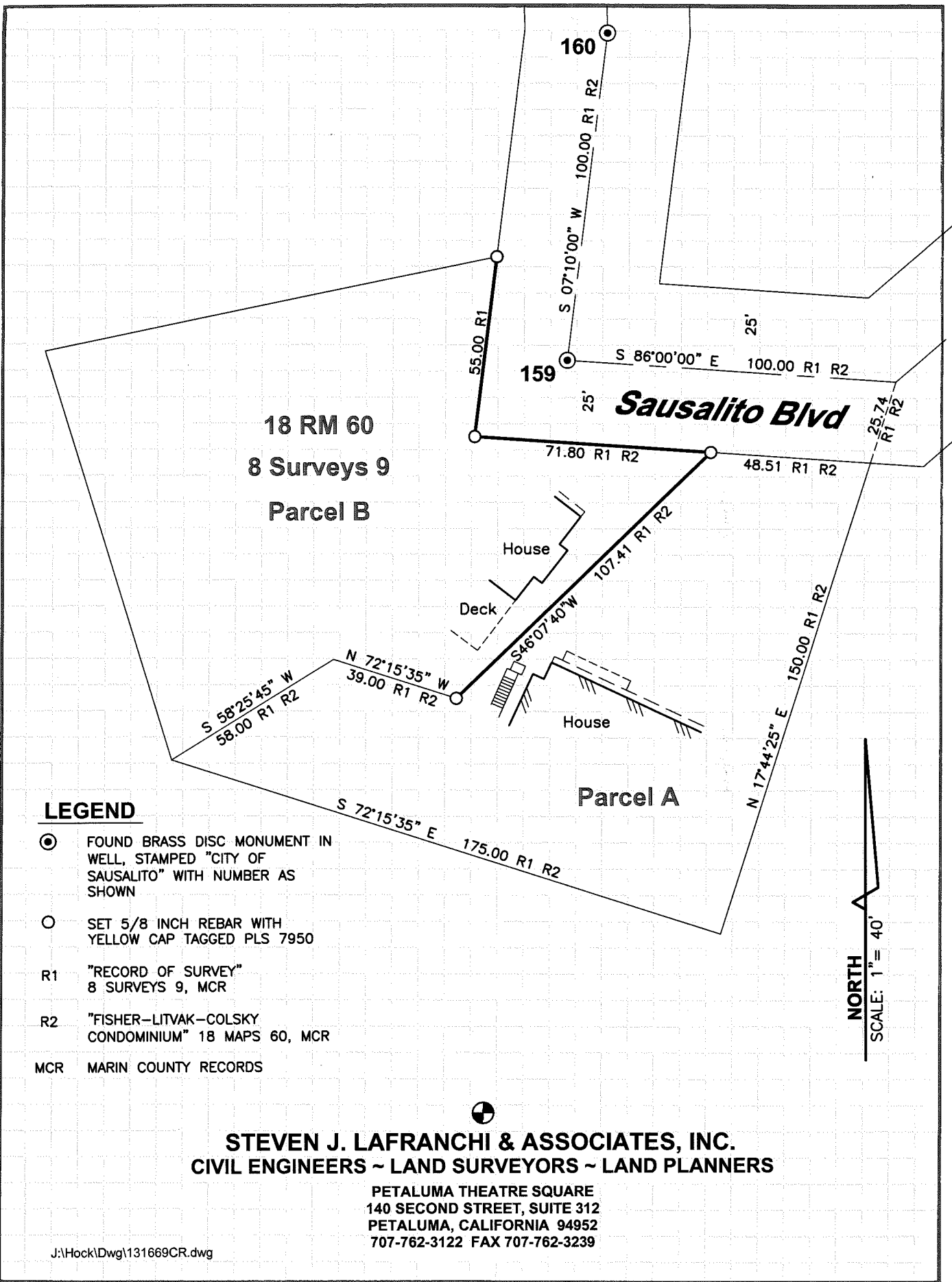
COUNTY SURVEYOR'S STATEMENT

This Corner Record was received FEBRUARY 13th 2014 and examined and filed FEBRUARY 19th 2014

Signed [Signature] Title DEPUTY



County Surveyor's Comment _____




STEVEN J. LAFRANCHI & ASSOCIATES, INC.
CIVIL ENGINEERS ~ LAND SURVEYORS ~ LAND PLANNERS
 PETALUMA THEATRE SQUARE
 140 SECOND STREET, SUITE 312
 PETALUMA, CALIFORNIA 94952
 707-762-3122 FAX 707-762-3239

J:\Hock\Drawg\131669CR.dwg