

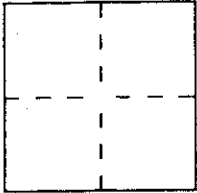
CORNER RECORD

Document Number APN 65-263-09

City of SAUSALITO

County of MARIN, California

Brief Legal Description APN 65-263-09, Portion Lot 224, Blk 13, 3 RMB6
29 05 39



CORNER TYPE

Government Corner Control
Meander Property
Rancho Other
Date of Survey _____

COORDINATES
(Optional)

N. _____
E. _____
Zone _____ Datum _____
Elev. _____

Corner — Left as found Found and tagged Established Reestablished Rebuilt

Identification and type of corner found: Evidence used to identify or procedure used to establish or reestablish the corner:

See Sketch

A description of the physical condition of the monument as found and as set or reset:

See Sketch



SURVEYOR'S STATEMENT

This Corner Record was prepared by me or under my direction in conformance with the Land Surveyors' Act on August 23 1999.

Signed Michael A. Brogan or R.C.E. Number LS 5767

COUNTY SURVEYOR'S STATEMENT

This Corner Record was received AUGUST 24 1999 and examined and filed AUGUST 25 1999.

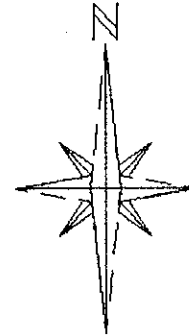
Signed John M. Wooley Title DEPUTY



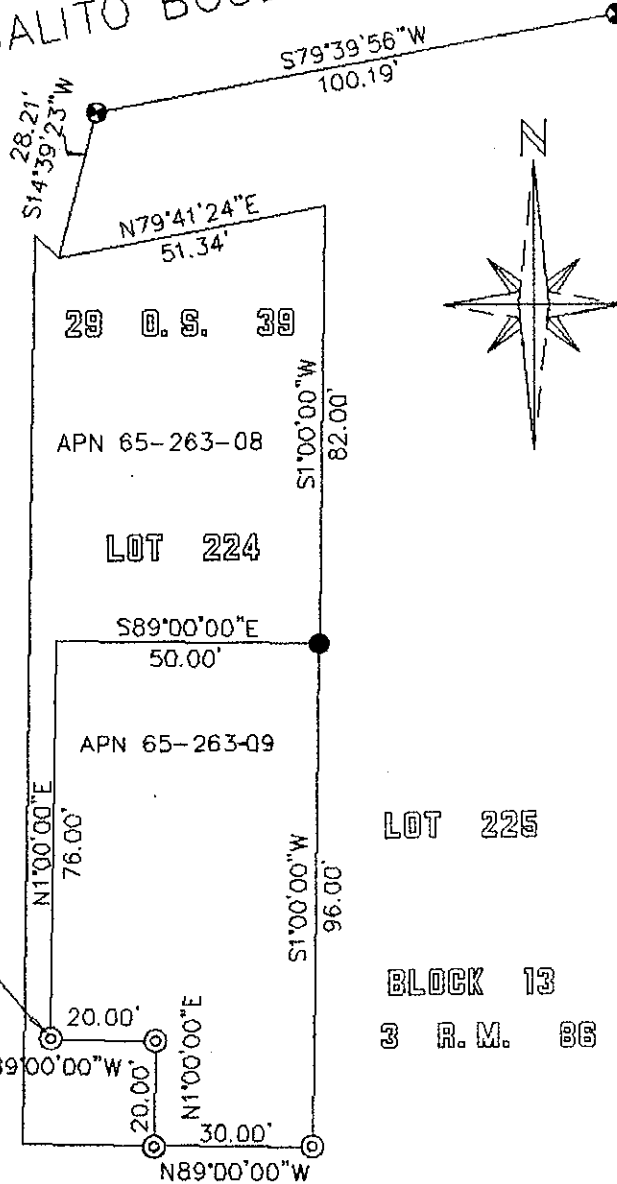
County Surveyor's Comment _____

SAUSALITO BOULEVARD

CORNER RECORD
NO 512 SOUTH STREET
SAUSALITO, MARIN COUNTY



LOT 223



SET LEAD PLUG AND
BRASS NAIL, TAGGED
LS 5767 - ON STEP

LOT 225

BLOCK 13

3 R.M. 88

SOUTH STREET

- = POINTS FOUND PER 29 O.S. 39
- ⊙ = SET 1/2" REBAR WITH CAP - LS 5767
UNLESS OTHERWISE NOTED
- ⊗ = CITY STREET MONUMENTS

M. BROGAN AND ASSOCIATES, INC.

319 MILLER AVENUE
MILL VALLEY CA 94941
JOB NO. 5445 AUGUST 1999
NOT TO SCALE