

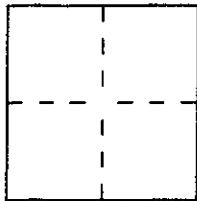
CORNER RECORD

Document Number A.P.N. 65-263-06

City of Sausalito

County of MARIN, California

Brief Legal Description # 516 South ST, APN 65-263-06, Part Lot 223 - Bk 13 - 3 RM 86



CORNER TYPE

- Government Corner
- Meander
- Rancho
- Date of Survey _____
- Control
- Property
- Other

COORDINATES (Optional)

N. _____
 E. _____
 Zone _____ Datum _____
 Elev. _____

Corner — Left as found Found and tagged Established Reestablished Rebuilt

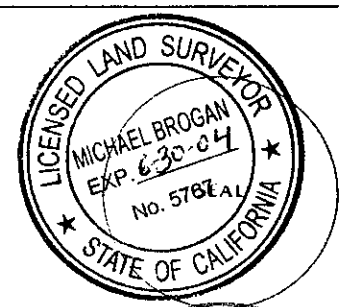
Identification and type of corner found: Evidence used to identify or procedure used to establish or reestablish the corner:
See back

A description of the physical condition of the monument as found and as set or reset:
See Back

SURVEYOR'S STATEMENT

This Corner Record was prepared by me or under my direction in conformance with the Land Surveyors' Act on Jan 6 2003

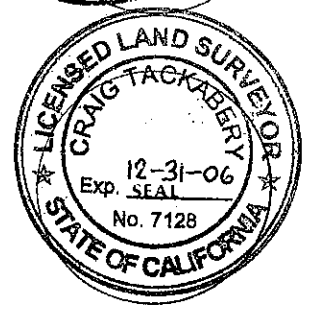
Signed Michael A. Brogan S. or R.C.E. Number LS 5767



COUNTY SURVEYOR'S STATEMENT

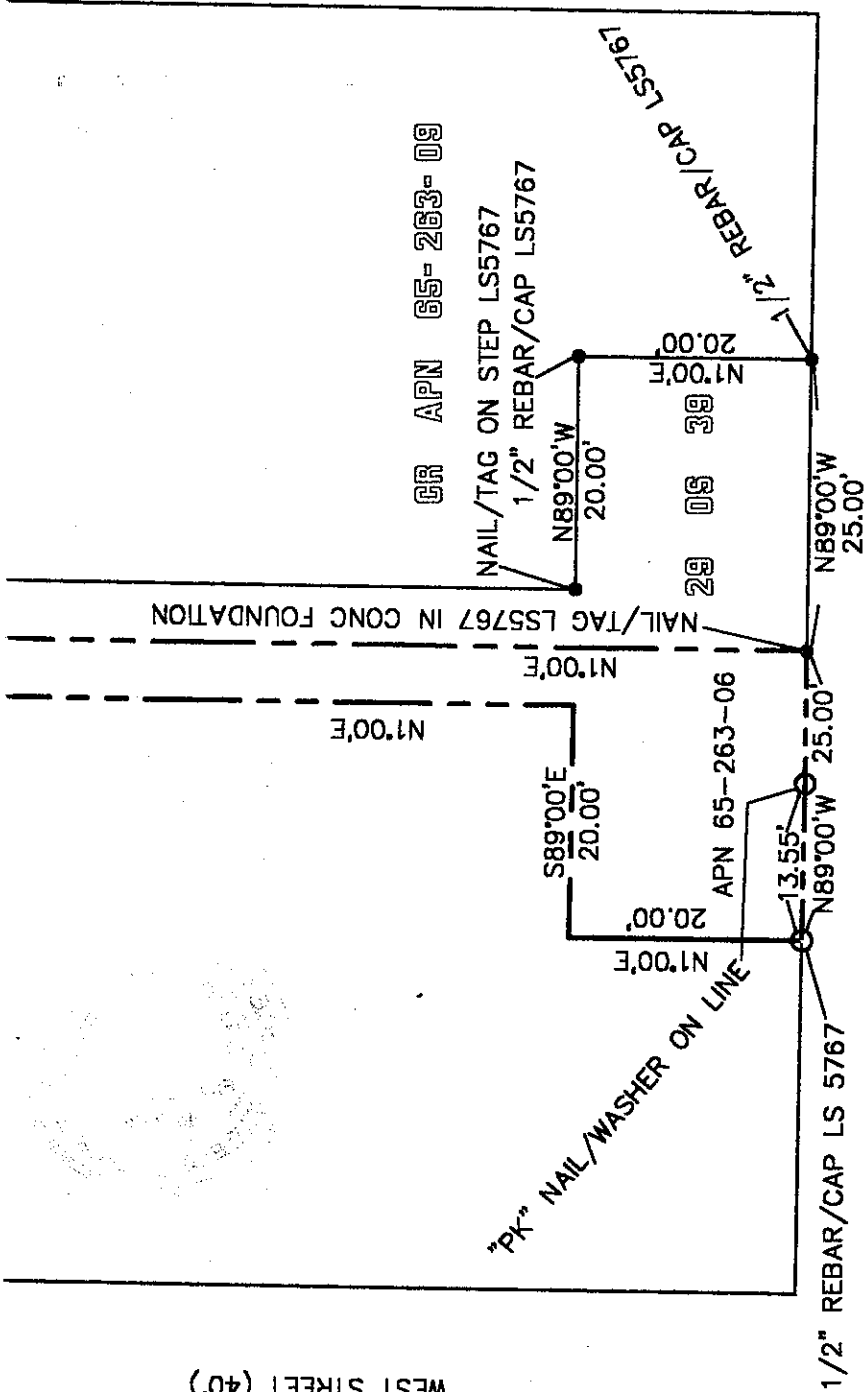
This Corner Record was received JANUARY 7, 2003 and examined and filed JANUARY 14, 2003

Signed Craig Taggbery Title DEPUTY



County Surveyor's Comment _____

WEST STREET (40')



NOTES
SURVEY BASED ON FOUND POINTS AS SHOWN

ALL DIMENSIONS ARE IN FEET AND DECIMALS THEREOF

● = FOUND MONUMENTATION AS NOTED; PER 29 OS 39, OR CR. NO. APN 65-263-09

○ = MONUMENTATION SET AS NOTED

CORNER RECORD
PORTION OF LOT 223, BLOCK 3
VOL. 3 OF MAPS AT PG. 86

M. BROGAN AND ASSOCIATES, INC.
319 MILLER AVENUE SUITE 4
MILL VALLEY CA 94941
JOB NO. 5557 DECEMBER 2002
NOT TO SCALE

APN 65-263-06