

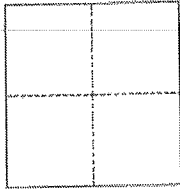
CORNER RECORD

Agency Index _____

Document Number 065-236-15

City of Sausalito County of Marin, California

Brief Legal Description Lands of Woodman Trust ETAL, 35 RS 65.



CORNER TYPE

- Government Corner
- Meander
- Rancho
- Control
- Property
- Other

Date of Survey April 8, 2017

COORDINATES (Optional)

N. _____ E. _____

Elevation _____

Units Metric U.S. Survey Foot

Horizontal Datum _____

Zone _____ Epoch Date _____

Vertical Datum _____

Complies with Public Resources Code §§8801-8819

Complies with Public Resources Code §§8890-8902

PLS Act Ref.: 8765(d) 8771 8773 Other:

Corner/Monument: Left as found Established Rebuilt Pre-Construction
 Found and tagged Reestablished Referenced Post-Construction

Narrative of corner identified and monument as found, set, reset, replaced, or removed:

See sheet #2 for description(s):

Found and set monuments as shown on Sheet #2.

SURVEYOR'S STATEMENT

This Corner Record was prepared by me or under my direction in conformance with

the Professional Land Surveyors' Act on April 8, 2017

Signed [Signature] R.C.E. No. 24059



COUNTY SURVEYOR'S STATEMENT

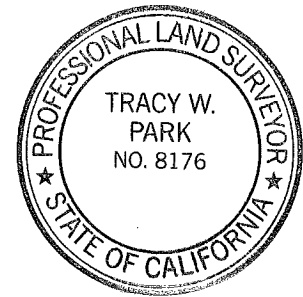
This Corner Record was received MARCH 31, 2017

and examined and filed APRIL 14, 2017

Signed T.W. Park P.L.S. or R.C.E. No. 8176

Title Dep. County Surveyor

County Surveyor's Comment _____

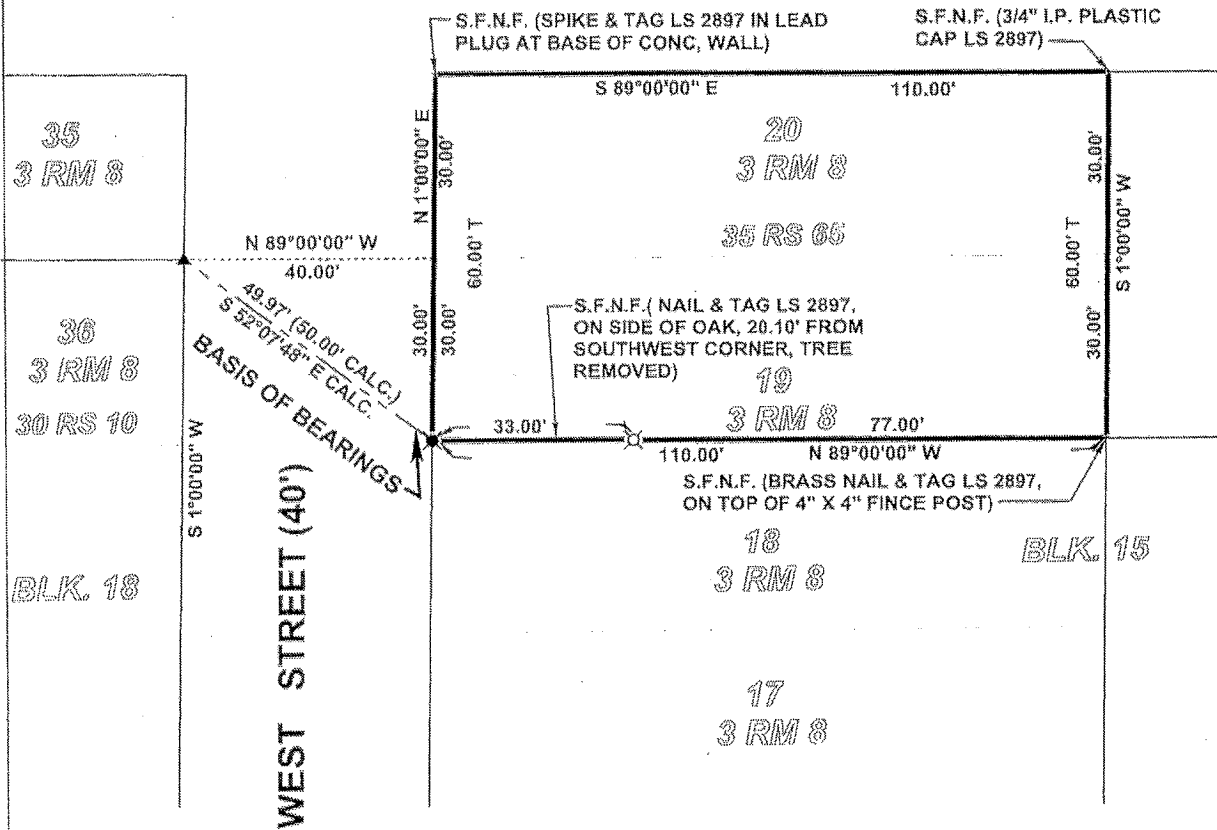


CORNER RECORD

4-8-17



RICHARDSON STREET (50')



LEGEND

- PROPERTY BOUNDARY LINE.
- ORIGINAL TRACT LINE.
- TIE LINE.
- BASIS OF BEARINGS LINE.
- FD. 3/4" IRON PIPE WITH PLUG, LS 2897.
- FD. NAIL & TAG LS 2897, ON OLD FENCE POST CONC. BASE.
- SET NAIL & TAG RCE 24059, ON CONC. FENCE POST BASE.
- S.F.N.F. SEARCHED FOR NOT FOUND.
- T. TOTAL.



NOTE

ALL DISTANCES ARE IN FEET AND DECIMALS THEREOF.