

CORNER RECORD

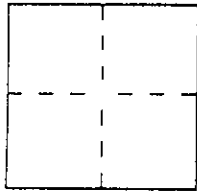
AP No 65-231-24

City of SAUSALITO

Document Number LOT 46 3 Rm 86

County of MARIN, California

Brief Legal Description LOT 46 3 Rm 86



CORNER TYPE

Government Corner [] Control []
Meander [] Property []
Rancho [] Other []
Date of Survey 2-2000

COORDINATES (Optional)

N.
E.
Zone Datum
Elev.

Corner — Left as found [] Found and tagged [] Established [] Reestablished [x] Rebuilt []

Identification and type of corner found: Evidence used to identify or procedure used to establish or reestablish the corner:

Reestablished CORNERS of LOT 46 3 Rm 86 by found monuments per 19 Rm 83

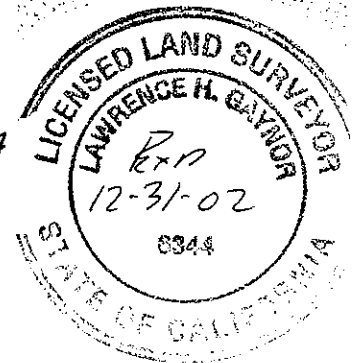
A description of the physical condition of the monument as found and as set or reset:

Set 1/2" Rebar and cap LS 6344

SURVEYOR'S STATEMENT

This Corner Record was prepared by me or under my direction in conformance with the Land Surveyors' Act on 3-2 19 2000

Signed [Signature] L.S. or R.C.E. Number LS 6344



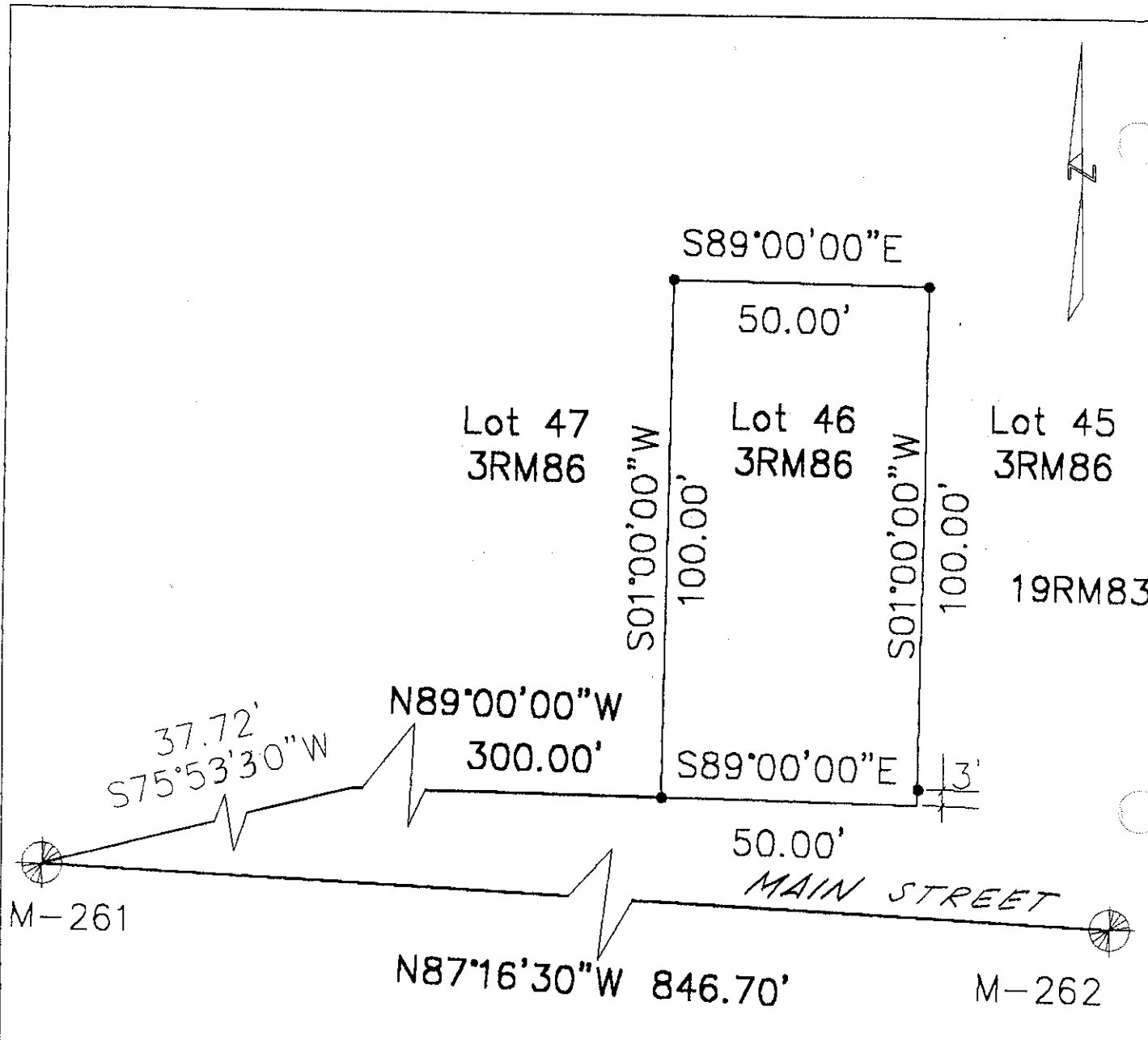
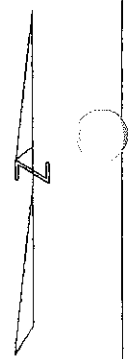
COUNTY SURVEYOR'S STATEMENT

This Corner Record was received SEPT. 30, 2002 19 and examined and filed OCTOBER 4, 2002 19


Signed [Signature] Title DEPUTY

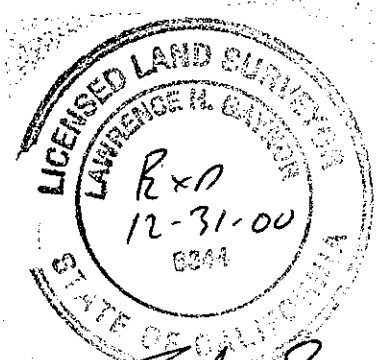


County Surveyor's Comment



Legend

- Set 1/2" rebar w/cap LS 6344
-  Fd Street Mon per 18 RM 83



L. A. Garrison

William Anrig & Assoc
 100 Helens Lane, Mill Valley, CA 94942
 415-381-8100
 Boundary Plat
 616 Main St Sausalito, CA AP 65-231-24
 Scale 1"=30'