

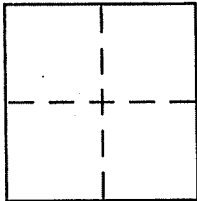
CORNER RECORD

Document Number APN 065-222-15

City of Sausalito

County of Marin, California

Brief Legal Description Lot 120 3 R.M. 86



CORNER TYPE

Government Corner Control
Meander Property
Rancho Other
Date of Survey 01-10-11

COORDINATES (Optional)

N. _____
E. _____
Zone _____ NAD27 NAD83
NAD83 Epoch _____
Elev. _____
Vert. Datum: NGVD29 NAVD88
Meas. Units: Metric Imperial

Corner - Left as found Found and tagged Established Reestablished Rebuilt

Identification and type of corner found: Evidence used to identify or procedure used to establish or reestablish the corner:

See page 2 of 2

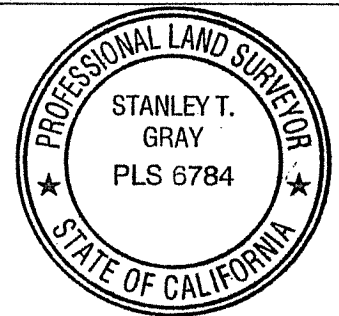
A description of the physical condition of the monument as found and as set or reset:

See page 2 of 2

SURVEYOR'S STATEMENT

This Corner Record was prepared by me or under my direction in conformance with the Land Surveyor's Act on 12 May 2011

Signed [Signature] P.L.S. or R.C.E. No. 6784



COUNTY SURVEYOR'S STATEMENT

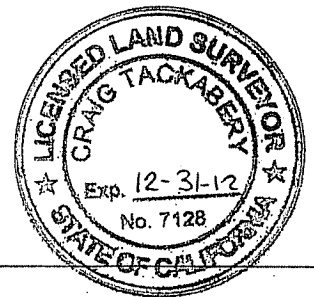
This Corner Record was received MAY 16, 2011

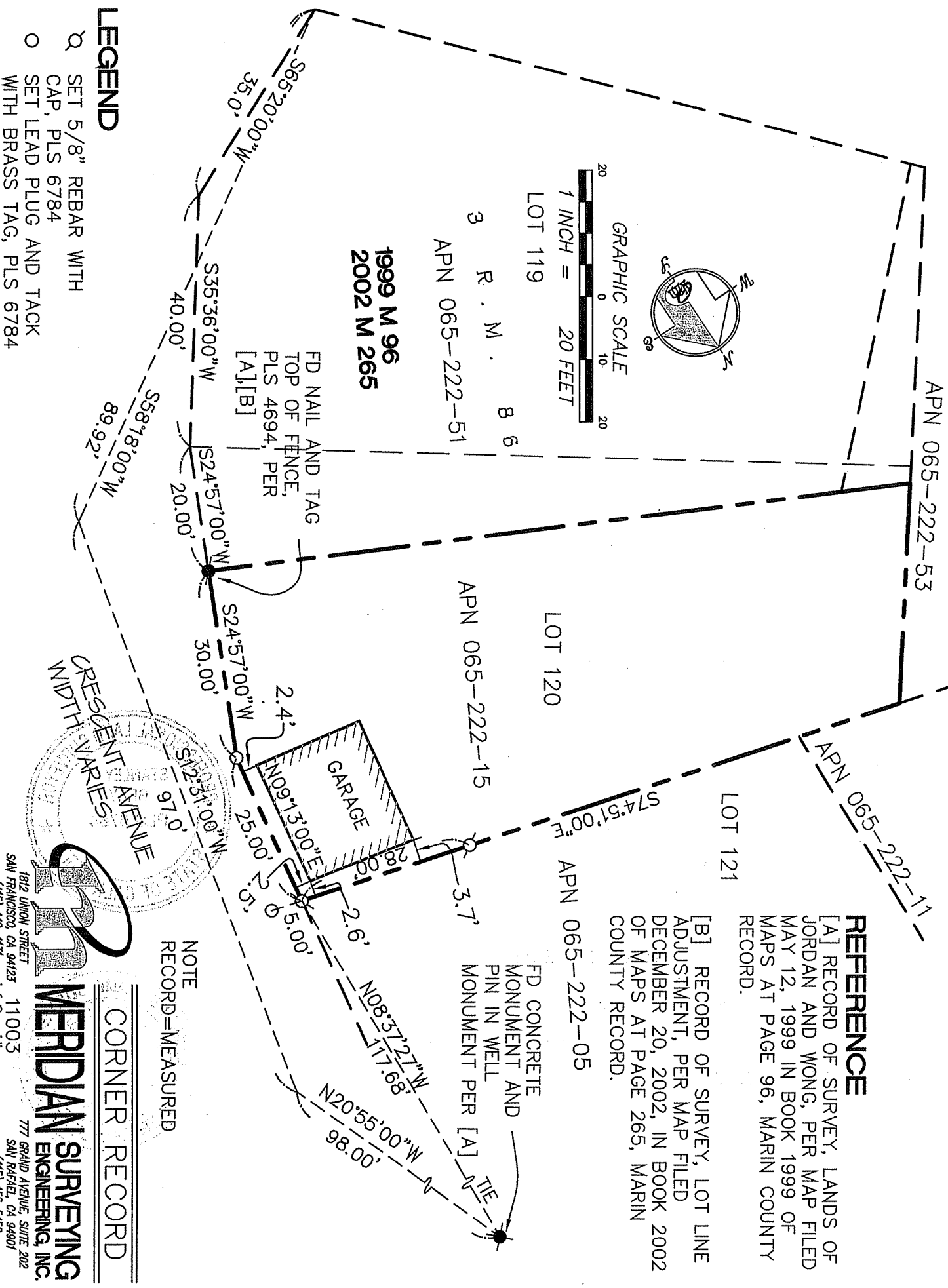
and examined and filed JULY 6, 2011

Signed [Signature] P.L.S. or R.C.E. No. 7128

Title COUNTY SURVEYOR

County Surveyor's Comment _____





REFERENCE

[A] RECORD OF SURVEY, LANDS OF JORDAN AND WONG, PER MAP FILED MAY 12, 1999 IN BOOK 1999 OF MAPS AT PAGE 96, MARIN COUNTY RECORD.

[B] RECORD OF SURVEY, LOT LINE ADJUSTMENT, PER MAP FILED DECEMBER 20, 2002, IN BOOK 2002 OF MAPS AT PAGE 265, MARIN COUNTY RECORD.

FD CONCRETE MONUMENT AND PIN IN WELL MONUMENT PER [A]

NOTE
RECORD=MEASURED

CORNER RECORD

LEGEND

- SET 5/8" REBAR WITH CAP, PLS 6784
- SET LEAD PLUG AND TACK WITH BRASS TAG, PLS 6784



MERRIDIAN SURVEYING, INC.
 777 GRAND AVENUE, SUITE 202
 SAN RAFAEL, CA 94901
 (415) 456-5450

1812 UNION STREET
 SAN FRANCISCO, CA 94123
 (415) 440-4131
 info@meridiansurvey.com