

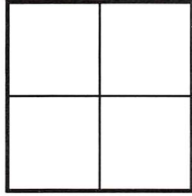
CORNER RECORD

Agency Index 21-016

Document Number A.P.065-221-55,57,61&62

City of SAUSALITO County of MARIN, California

Brief Legal Description 2002 M 196



CORNER TYPE

Government Corner Control
Meander Property
Rancho Other

Date of Survey DECEMBER 8, 2020

COORDINATES(Optional)

N. _____ E. _____

Elevation _____

Units Metric U.S. Survey Foot

Horizontal Datum _____

Zone _____ Epoch Date _____

Vertical Datum _____

Complies with Public Resources Code §§8801-8819

Complies with Public Resources Code §§8890-8902

PLS Act Ref.: 8765(d) 8771 8773 Other:

Corner/Monument: Left as found Established Rebuilt Pre-Construction

Found and tagged Reestablished Referenced Post-Construction

Narrative of corner identified and monument as found, set, reset, replaced, or removed:

See sheet #2 for description(s):

1. REESTABLISHED MONUMENTS DESTROYED BY THE CONSTRUCTION OF A DRIVEWAY AND ESTABLISHED BOUNDARY CORNERS SHOWN ON 2002 M 196

SURVEYOR'S STATEMENT

This Corner Record was prepared by me or under my direction in conformance with

the Professional Land Surveyors' Act on December 14, 2020

Signed Lawrence P. Doyle P.L.S. No. 4694



COUNTY SURVEYOR'S STATEMENT

This Corner Record was received 2-11-21

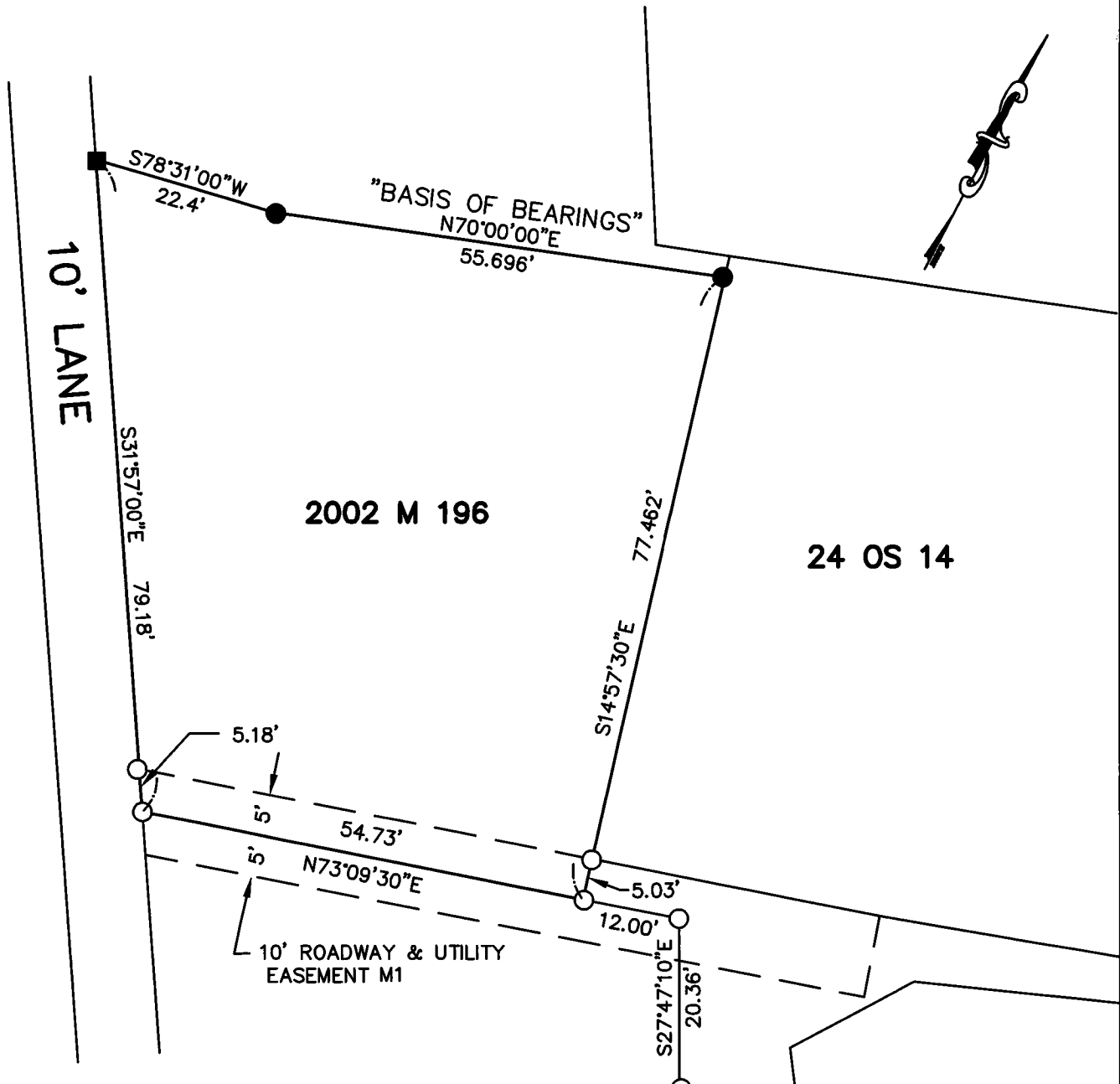
and examined and filed 5-12-21

Signed [Signature] P.L.S. or R.C.E. No. 9292

Title Deputy

County Surveyor's Comment





LEGEND

- FOUND 1/2" REBAR & PLASTIC CAP STAMPED LS 5065
- FOUND HUB & BRASS STAMPED TAG LS 5065
- SET NAIL & BRASS TAG STAMPED PLS 4694

BASIS OF BEARINGS

THE BASIS OF BEARINGS FOR THIS SURVEY IS N70°00'00"E BETWEEN 1/2" REBAR AND PLASTIC CAPS STAMPED LS 5065

MAP REFERENCE

- M1 2002 M 196
- M2 24 OS 14

NAIL & TAG
RCE 3230 PER M1 & M2
DESTROYED



CORNER RECORD		
2002 MAPS 196		
SAUSALITO MARIN COUNTY CALIFORNIA		
SCALE: 1"=20'	LAWRENCE P. DOYLE	DRAWN BY:
DATE: 12/8/2020	LAND SURVEYOR/CIVIL ENGINEER	SHEET 2 OF 2
100 HELENS LANE MILL VALLEY CA 94941 (415-388-9585)		
		DRAWING NO. 2899