

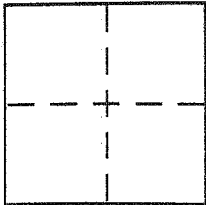
CORNER RECORD

Document Number 2612 OR 353

City of SAUSALITO

County of MARIN, California

Brief Legal Description PARCEL 2 3-OS-B3 AP# 65-202-55



CORNER TYPE

Government Corner Control
Meander Property
Rancho Other
Date of Survey _____

COORDINATES (Optional)

N. _____
E. _____
Zone _____ NAD27 NAD83
NAD83 Epoch _____
Elev. _____
Vert. Datum: NGVD29 NAVD88
Meas. Units: Metric Imperial

Corner - Left as found Found and tagged Established Reestablished Rebuilt

Identification and type of corner found: Evidence used to identify or procedure used to establish or reestablish the corner:

- AS SHOWN ON SHEET 2 -

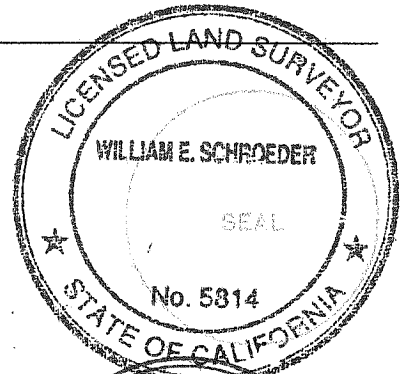
A description of the physical condition of the monument as found and as set or reset:

- AS SHOWN ON SHEET 2 -

SURVEYOR'S STATEMENT

This Corner Record was prepared by me or under my direction in conformance with the Land Surveyor's Act on JAN 17 2014

Signed William Schroeder P.L.S. or R.C.E. No. _____



COUNTY SURVEYOR'S STATEMENT

This Corner Record was received FEB 25, 2014

and examined and filed MARCH 31, 2014

Signed Richard G. Simonitch P.L.S. or R.C.E. No. 7821

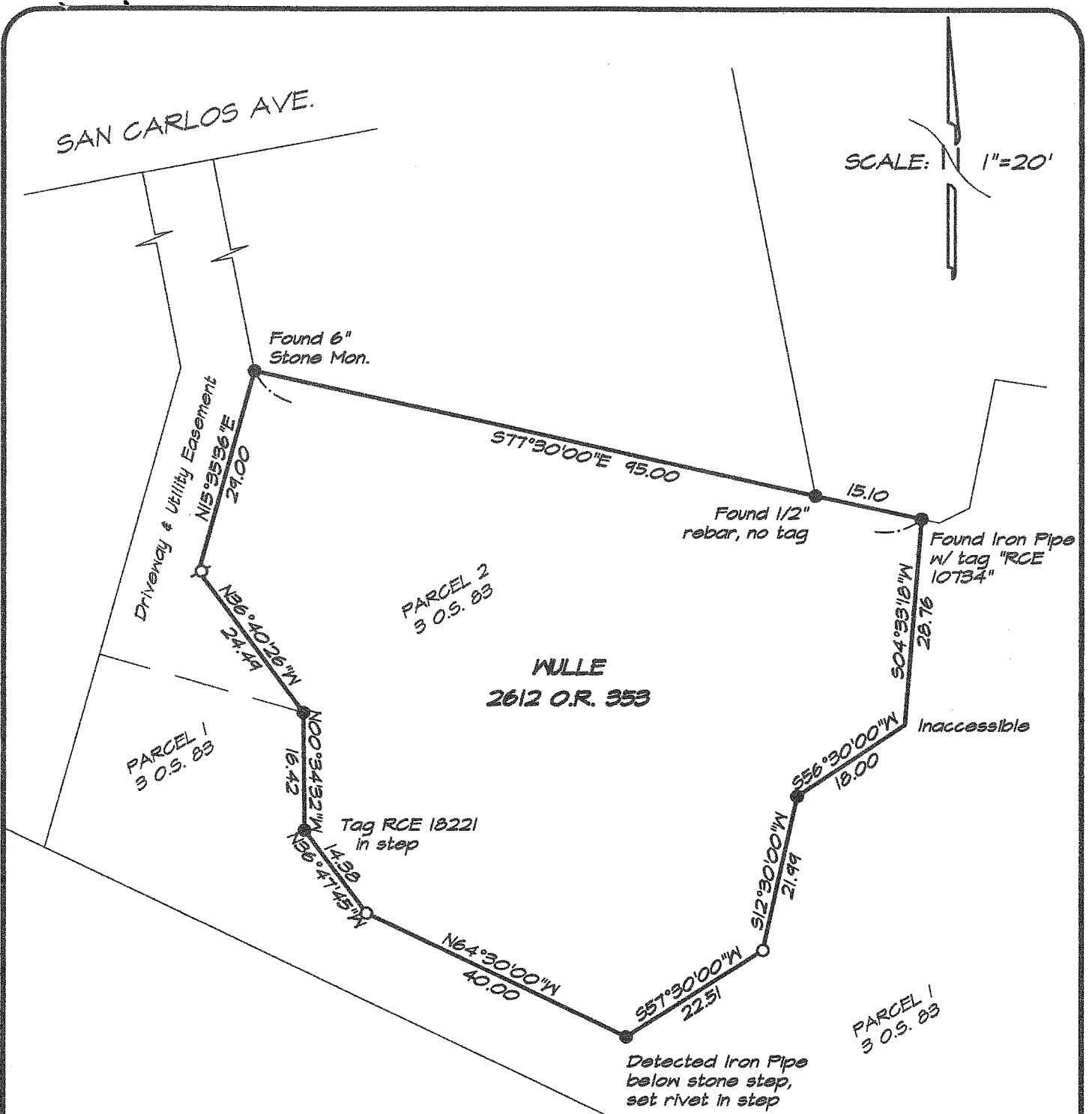
Title DEPUTY



County Surveyor's Comment _____

SAN CARLOS AVE.

SCALE: 1"=20'



LEGEND

- = Found 3/4" Iron Pipe "RCE 18221" 33 OS 27, or as noted
- = Set 3/4" Iron Pipe with plastic cap "LS 5814"
- ⊗ = Set Rivet & Tag "LS 5814"