

# CORNER RECORD

Document Number A.P.# 65-195-17

City of SAUSALITO

County of MARIN, California

Brief Legal Description PARCEL 1 P.M. 71 & 32 O.S. 16

### CORNER TYPE

Government Corner  Control   
 Meander  Property   
 Rancho  Other   
 Date of Survey 12/10/03

### COORDINATES (Optional)

N. \_\_\_\_\_  
 E. \_\_\_\_\_  
 Zone  NAD27  NAD83   
 NAD83 Epoch \_\_\_\_\_  
 Elev. \_\_\_\_\_  
 Vert. Datum:  NGVD29  NAVD88   
 Meas. Units:  Metric  Imperial

Corner- Left as found  Found and tagged  Established  Reestablished  Rebuilt

Identification and type of corner found: Evidence used to identify or procedure used to establish or reestablish the corner:  
REESTABLISHED THE ADJUSTED PROPERTY LINE FROM MONUMENTS SHOWN ON 32 O.S. 16

A description of the physical condition of the monument as found and as set or reset: SEE SHEET 2.

### SURVEYOR'S STATEMENT

This Corner Record was prepared by me or under my direction in conformance with

the Land Surveyor's Act on FEBRUARY 17 2004

Signed Lawrence P. Doyle P.L.S. or R.C.E. No. P.L.S. 4694



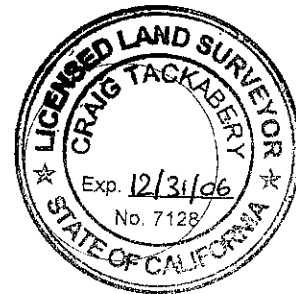
### COUNTY SURVEYOR'S STATEMENT

This Corner Record was received FEBRUARY 23, 2004

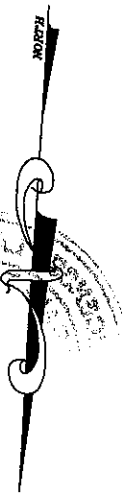
and examined and filed MARCH 15, 2004

Signed Craig Tackabery P.L.S. or R.C.E. No. 7128

Title COUNTY SURVEYOR



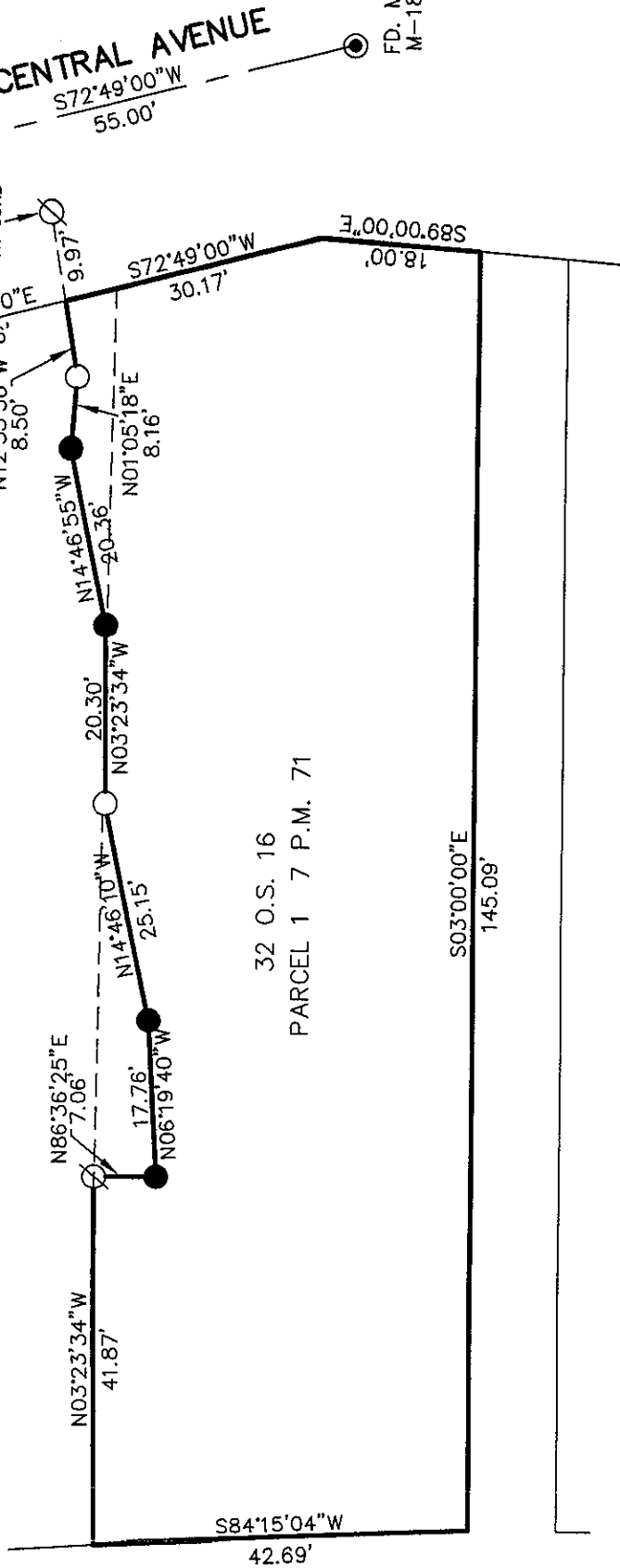
County Surveyor's Comment \_\_\_\_\_



PARCEL A 10 P.M. 21A

32 O.S. 16

PARCEL 1 7 P.M. 71

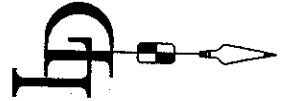


**LEGEND**

- FOUND STREET MONUMENT
- FOUND 1/2" REBAR AND CAP  
L.S. 4402
- SET 3/4" PIPE AND PLUG  
L.S. 4694
- ⊙ SET NAIL AND TAG  
L.S. 4694

**BASIS OF BEARING**

BASIS OF BEARING IS ACCORDING  
TO FOUND POINTS PER 32 O.S. 16.



**CORNER RECORD**

PARCEL 1 P.M. 71 & 32 O.S. 16  
SAUSALITO MARIN COUNTY CALIFORNIA

SCALE: 1" = 20'  
DATE: 12/11/03  
DRAWN BY: SHEET 2 OF 2

**LAWRENCE P. DOYLE**

LAND SURVEYOR/CIVIL ENGINEER

P.O. BOX 1609 MILL VALLEY CA 94942 (415-388-9585)

DRAWING NO.  
1225-03