

CORNER RECORD

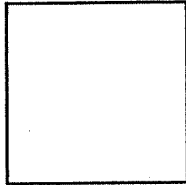
APN 065-191-76

Document No 25 PM 59

City of Sausalito

County of Marin, California

Brief Legal Description Parcel 1, 25 PM 59



CORNER TYPE

Government Corner Control
 Meander Property
 Rancho Other
 Date of Survey June 11, 2008

COORDINATES (Optional)

N. _____
 E. _____
 Zone _____ Datum _____
 Elev. _____

Corner- Left as found Found and tagged Established Reestablished Rebuilt

Identification and type of corner found: Evidence used to identify or procedure to establish or reestablish the corner:
Established property corners on Parcel 1, 25 PM 59 per found monuments as shown on herein sht. 2.

A description of the physical condition of the monument as found and as set or reset:
Set monuments at locations shown on herein sheet 2. Found monuments, shown on herein sheet 2.

SURVEYOR'S STATEMENT

This Corner Record was prepared by me or under my direction in conformance with the Land Surveyors Act on June 26, 2008.

Signed David W. Keene PLS Number 5461

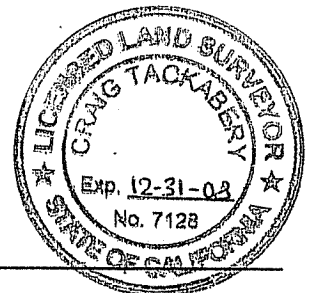


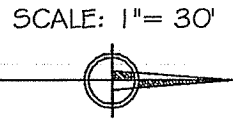
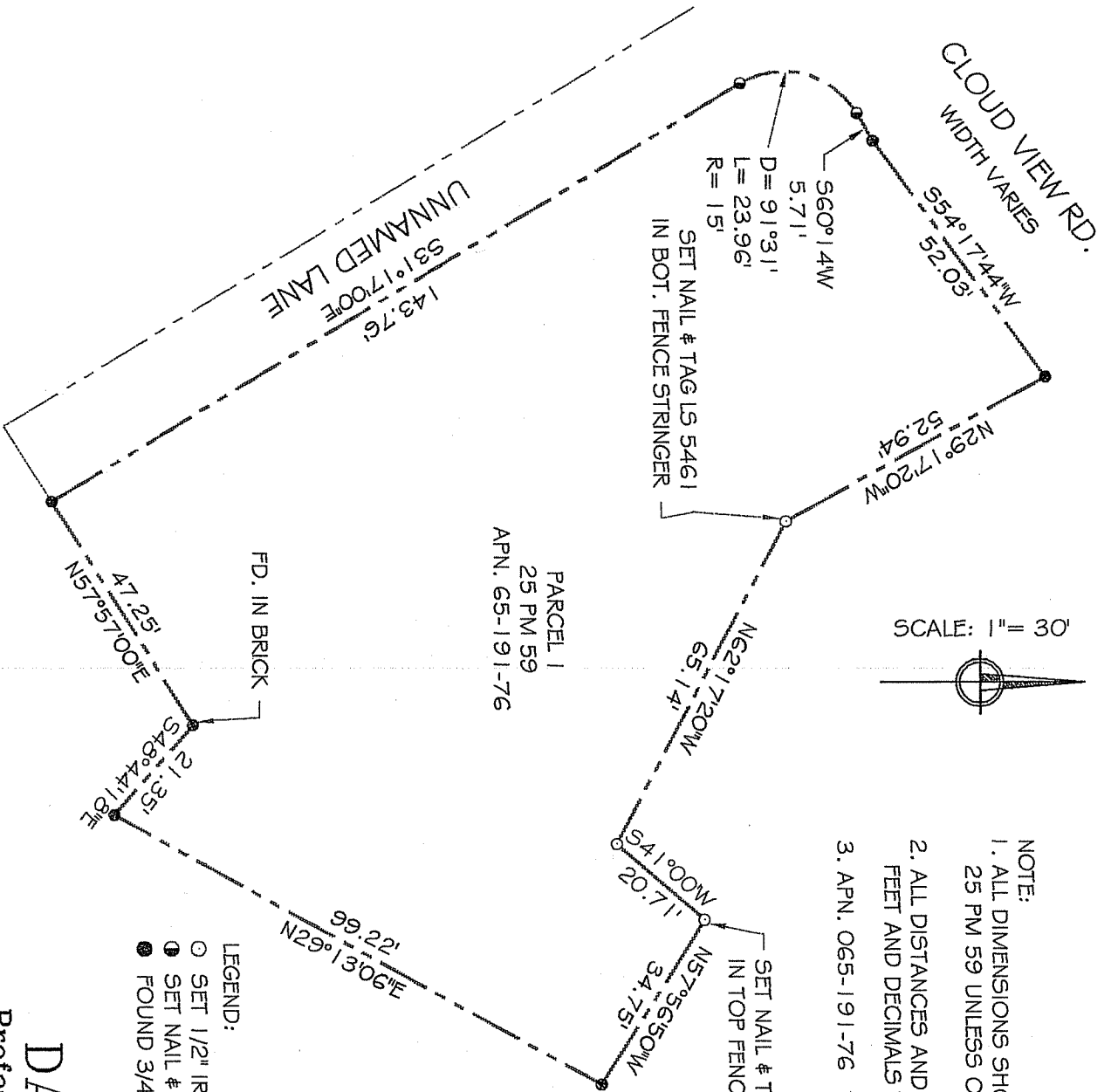
COUNTY SURVEYOR'S STATEMENT

This Corner Record was received JULY 1, 2008 and examined and filed JULY 24, 2008.

Signed _____ Title COUNTY SURVEYOR

County Surveyor's Comments _____





- NOTE:
1. ALL DIMENSIONS SHOWN HEREIN ARE PER 25 PM 59 UNLESS OTHERWISE NOTED.
 2. ALL DISTANCES AND DIMENSIONS ARE IN FEET AND DECIMALS THEREOF.
 3. APN. 065-191-76

- LEGEND:
- SET 1/2" IRON PIPE W/ PL. CAP LS 5461 OR AS SHOWN
 - SET NAIL & TAG LS 2897 IN ROCK WALL
 - FOUND 3/4" IP W/ TAG LS 2897 PER 25 PM 59

EXHIBIT 'A'

DAVID KEANE
Professional Land Surveyors

tel: (415) 927-8801 fax: (415) 927-8802
5710 Paradise Drive, Ste. 8
Corte Madera, CA 94925

06-08-19 DATE: 6/26/08