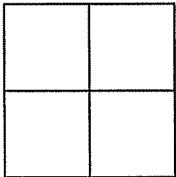


CORNER RECORD

Document Number AP:065-191-62

City of SAUSALITO County of Marin State of California.

Brief Legal Description: PARCEL ONE of "9 PM 56" [BEING LAND DIVISION OF 7 PM 70 & 3 OS 145]



CORNER TYPE:

Government Corner Control
Meander Property
Rancho Other
Date of Survey SEPT 05, 2008

COORDINATES:

[Optional]
N> _____
E> _____
Zone _____ Datum _____
Elev> _____

CORNER: ----- Left as found Found & Tagged Established Reestablished Rebuilt

Identification & Type of Corner Found: Evidence used to identify or procedure used to establish or reestablish the corner:

FOUND STD STREET WELL MONUMENTS PER "9 PM 56" RESET BOUNDARY POINTS PER THE MAP ON THE REVERSE.

A description of the physical condition of the monument as found and as set or reset:

**Original corners not found.
Set points as shown on reverse.**



SURVEYOR'S STATEMENT:

The corner record was prepared by me or under my direction in conformance with the Land Surveyors' Act on SEPT 05, 2008 2008

Signed: Douglas J. Matteson RCE# 18200

COUNTY SURVEYORS STATEMENT:

This corner record was received: SEPT. 15 2008

and filed OCTOBER 14, 2008 2008

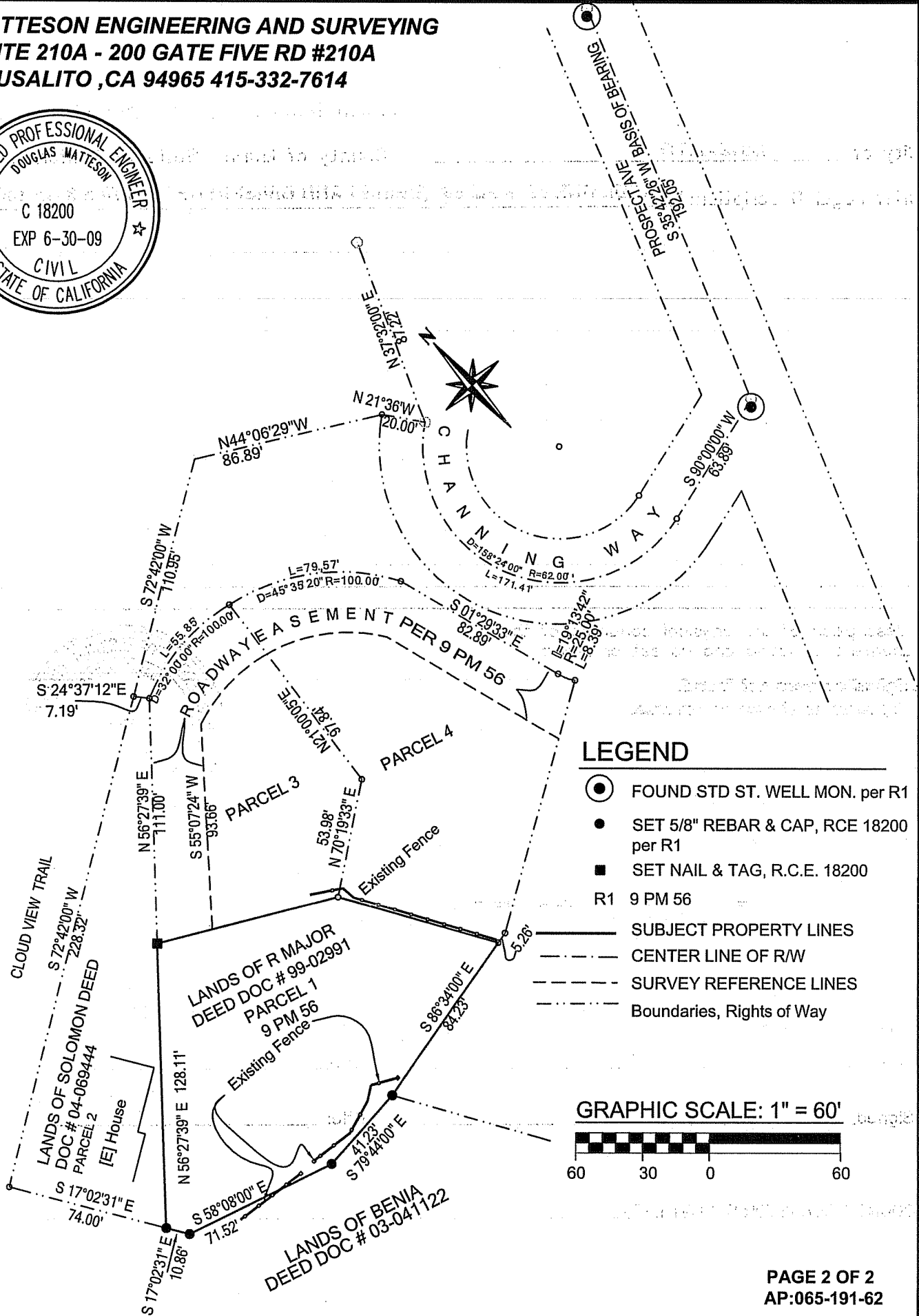
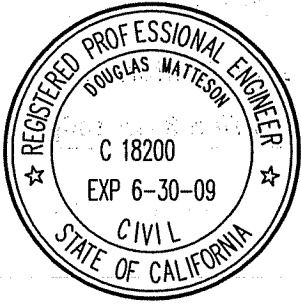


Signed: _____ Title: _____

By recording this record and by the filing of this record, the public character of the

COUNTY SURVEYOR'S COMMENT _____

MATTESON ENGINEERING AND SURVEYING
SUITE 210A - 200 GATE FIVE RD #210A
SAUSALITO, CA 94965 415-332-7614



LEGEND

- FOUND STD ST. WELL MON. per R1
- SET 5/8" REBAR & CAP, RCE 18200 per R1
- SET NAIL & TAG, R.C.E. 18200
- R1 9 PM 56
- SUBJECT PROPERTY LINES
- - - CENTER LINE OF RW
- - - SURVEY REFERENCE LINES
- - - Boundaries, Rights of Way

GRAPHIC SCALE: 1" = 60'

