

L. A. Stevens & Associates, Inc.  
Professional Land Surveyors  
Novato, California

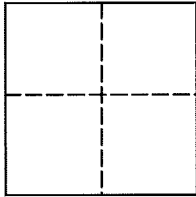
**Lands of Blanton III Trust**  
**Job #: 12-1426**

**CORNER RECORD**

Document Number 065-191-43

City of Sausalito, County of Marin, California

Brief Legal Description: Being the northeasterly line of Lot 1 of tat certain map entitled "Map of Mead Terrace", filed in Volume 13 of Maps at Page 11, Marin County Records.



**CORNER TYPE**

Government Corner  Control   
Meander  Property   
Rancho  Other   
Date of Survey October 31, 2012

**COORDINATES (Optional)**

N \_\_\_\_\_  
E \_\_\_\_\_  
Zone \_\_\_\_\_ NAD27  NAD83   
NAD 83 Epoch \_\_\_\_\_  
Elev. \_\_\_\_\_  
Vert. Datum: NGVD29  NAVD88   
Meas. Units: Metric  Imperial

**Corner -** Left as found  Found and tagged  Established  Reestablished  Rebuilt

Identification and type of corner found: Evidence used to identify or procedure used to establish or reestablish the corner:  
See Page 2 of 2

A description of the physical condition of the monument as found and as set or reset:  
See Page 2 of 2

0

**SURVEYOR'S STATEMENT**

This Corner Record was prepared by me or under my direction in conformance with

The Land Surveyor's Act on November 7, 2012

Signed [Signature] P.L.S 6649



**COUNTY SURVEYOR'S STATEMENT**

This Corner Record was received NOVEMBER 15, 2013

and examined and filed JANUARY 15, 2013

Signed [Signature] P.L.S. or R.G.E. No. 7821

Title DEPUTY COUNTY SURVEYOR

County Surveyors' Comment \_\_\_\_\_



All distances shown are in feet and decimals thereof

# LEGEND

- Found Pin In Concrete, In Hand Hole, 0.9' Below Asphalt
- ⊙ Found (5) Nails In Concrete, In Hand Hole, Located Center Nail, 0.9' Below Asphalt
- ⊙ Set 3/4" Iron Pipe & Plastic Plug, Stamped "L.A. Stevens, LS 6649"

U.N.O. Unless Noted Otherwise

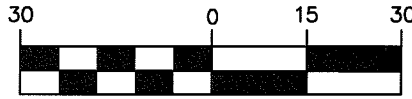
R1 13 RM 11

● Tree (Size & Type Noted)

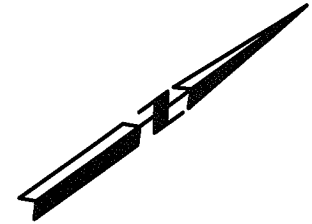
N.T.S. Not To Scale

M&R Measured & Record

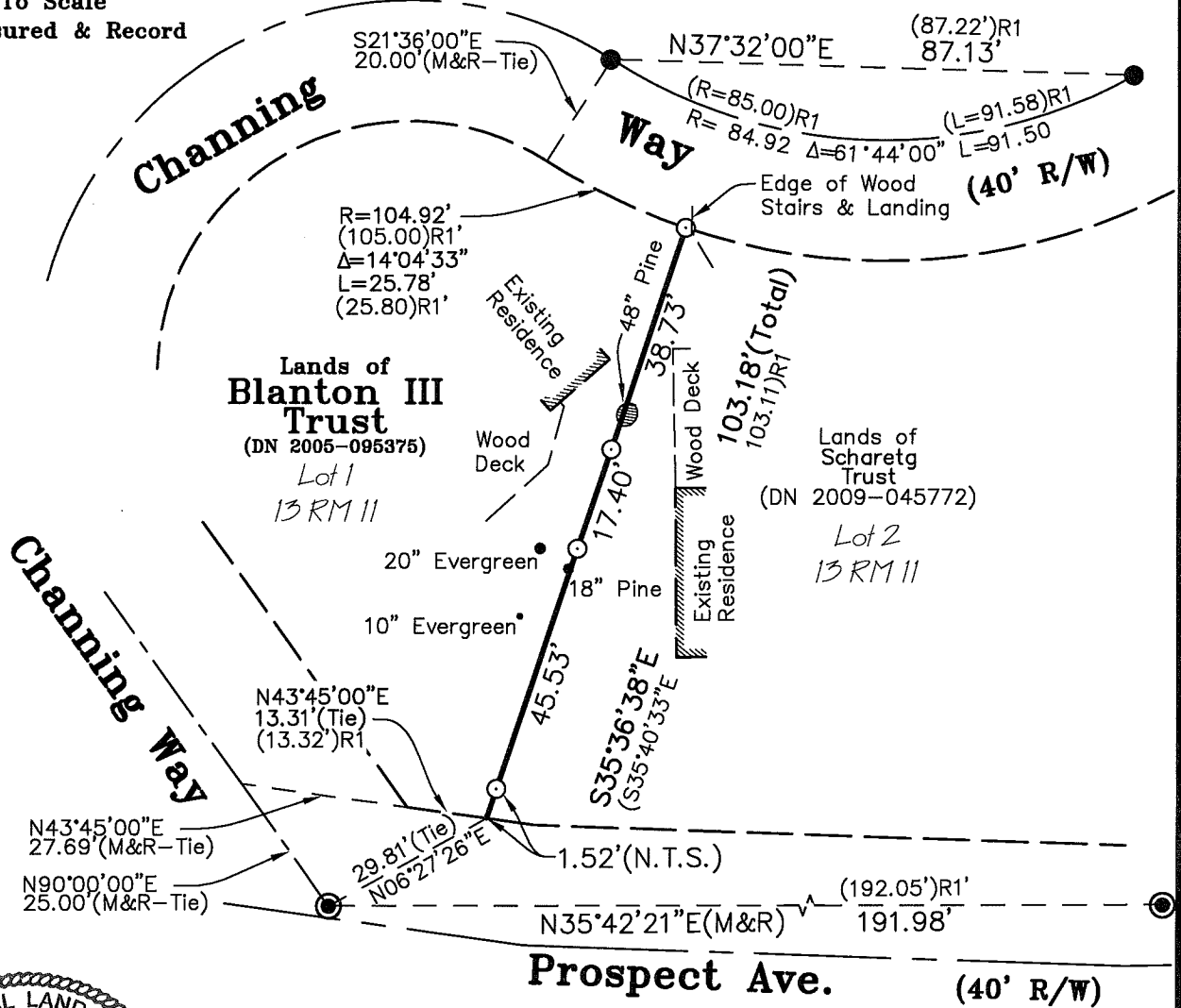
## GRAPHIC SCALE



IN FEET



## BASIS OF BEARINGS



Lawrence A. Stevens, PLS 6649

## Corner Record Lands of Blanton III Trust

(Lot 1, 13 RM 11)

Sausalito Marin County California

Scale: 1" = 30'

November 2012

L.A. Stevens & Associates, Inc.

Professional Land Surveyors \* (415) 382-7713

7 Commercial Blvd., Suite 1 \* Novato, CA 94949

Job # 121426Fld

Page 2 Of 2