

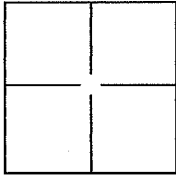
# CORNER RECORD

Document Number APN 065-191-17

City of SAUSALITO

County of MARIN, California

Brief Legal Description \_\_\_\_\_



### CORNER TYPE

Government Corner  Control   
 Meander  Property   
 Rancho  Other

Date of Survey JULY 2011

### COORDINATES(Optional)

N. \_\_\_\_\_  
 E. \_\_\_\_\_  
 Zone \_\_\_\_\_ NAD27  NAD83   
 NAD83 Epoch \_\_\_\_\_  
 Elev. \_\_\_\_\_  
 Vert. Datum: NGVD29  NADV88   
 Meas. Units: Metric  Imperial

Corner - Left as found  Found and tagged  Established  Reestablished  Rebuilt

Identification and type of corner found: Evidence used to identify or procedure used to establish or reestablish the corner:

RETRACEMENT OF 14 PM 9 & 7 PM 55

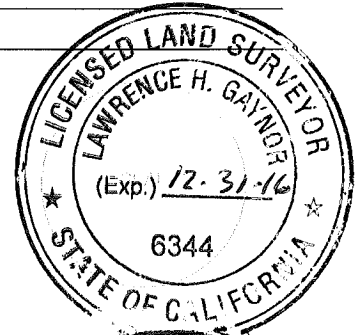
A description of the physical condition of the monument as found and as set or reset:

SET 1/2" DIA. REBAR & CAP LS 6344

### SURVEYOR'S STATEMENT

This Corner Record was prepared by me or under my direction in conformance with  
 the Land Surveyor's Act on DECEMBER 2015.

Signed [Signature] P.L.S. or R.C.E. No.: PLS 6344



### COUNTY SURVEYOR'S STATEMENT

This Corner Record was received FEBRUARY 17, 2016 and examined  
 and filed AUGUST 3, 2016.

Signed [Signature] P.L.S. or R.C.E. No.: 7821

Title County Surveyor

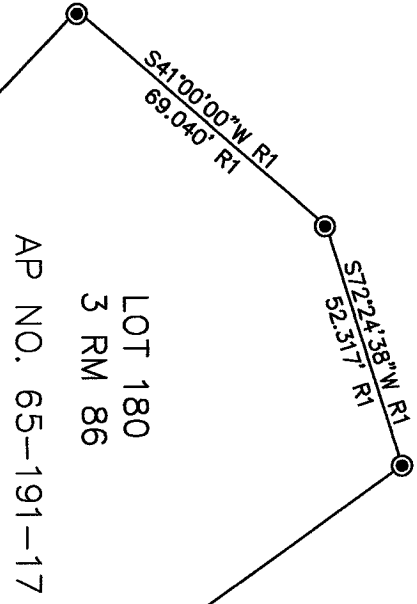
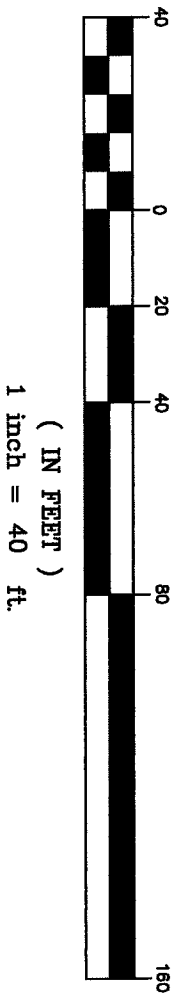
County Surveyor's Comment \_\_\_\_\_



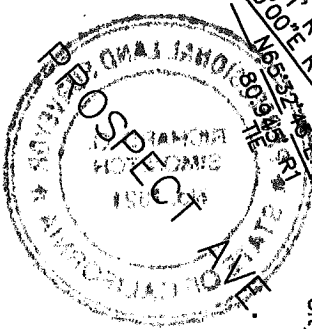
# LEGEND

- ◆ Found Monuments as shown
- Set 1/2" Rebar and Cap LS 6344

## GRAPHIC SCALE



- REFERENCE
- R1 14 PM 9
  - R2 9 PM 97
  - R3 7 PM 55



City of Sausalito Mon M-191

City of Sausalito Mon M-190

BASIS OF BEARINGS  
N34°22'20\"/>

FOUND MOUNDS PER  
14 PM 9  
9 PM 97  
7 PM 55

