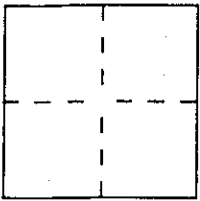


CORNER RECORD

Document Number 20 PM 78

City of SAUSALITO County of MARIN, California

Brief Legal Description PARCEL 2, 20 P.M. 78, MARIN COUNTY RECORDS



CORNER TYPE

Government Corner Control
Meander Property
Rancho Other
Date of Survey APRIL 2001

COORDINATES (Optional)

N. _____
E. _____
Zone _____ Datum _____
Elev. _____

Corner — Left as found Found and tagged Established Reestablished Rebuilt

Identification and type of corner found: Evidence used to identify or procedure used to establish or reestablish the corner:

CORNER IDENTIFIED AS "A" ON THE REVERSE OF THIS SHEET SET PER MONUMENTATION SHOWN UPON "PARCEL MAP LANDS OF LAPIN BEING A PORTION OF BLOCK 4 SAUSALITO LAND AND FERRY CO., SAUSALITO" FILED IN BOOK 20 OF PARCEL MAPS AT PAGE 78, MARIN CO. RECORDS

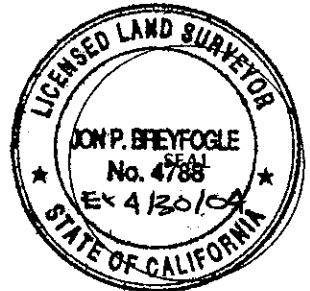
A description of the physical condition of the monument as found and as set or reset:

AT CORNER "A" SET A CONCRETE NAIL WITH TAG "LS 4788" IN A FLAGSTONE PATIO.

SURVEYOR'S STATEMENT

This Corner Record was prepared by me or under my direction in conformance with the Land Surveyors' Act on APRIL 15 2001

Signed [Signature] L.S. or R.C.E. Number LS 4788



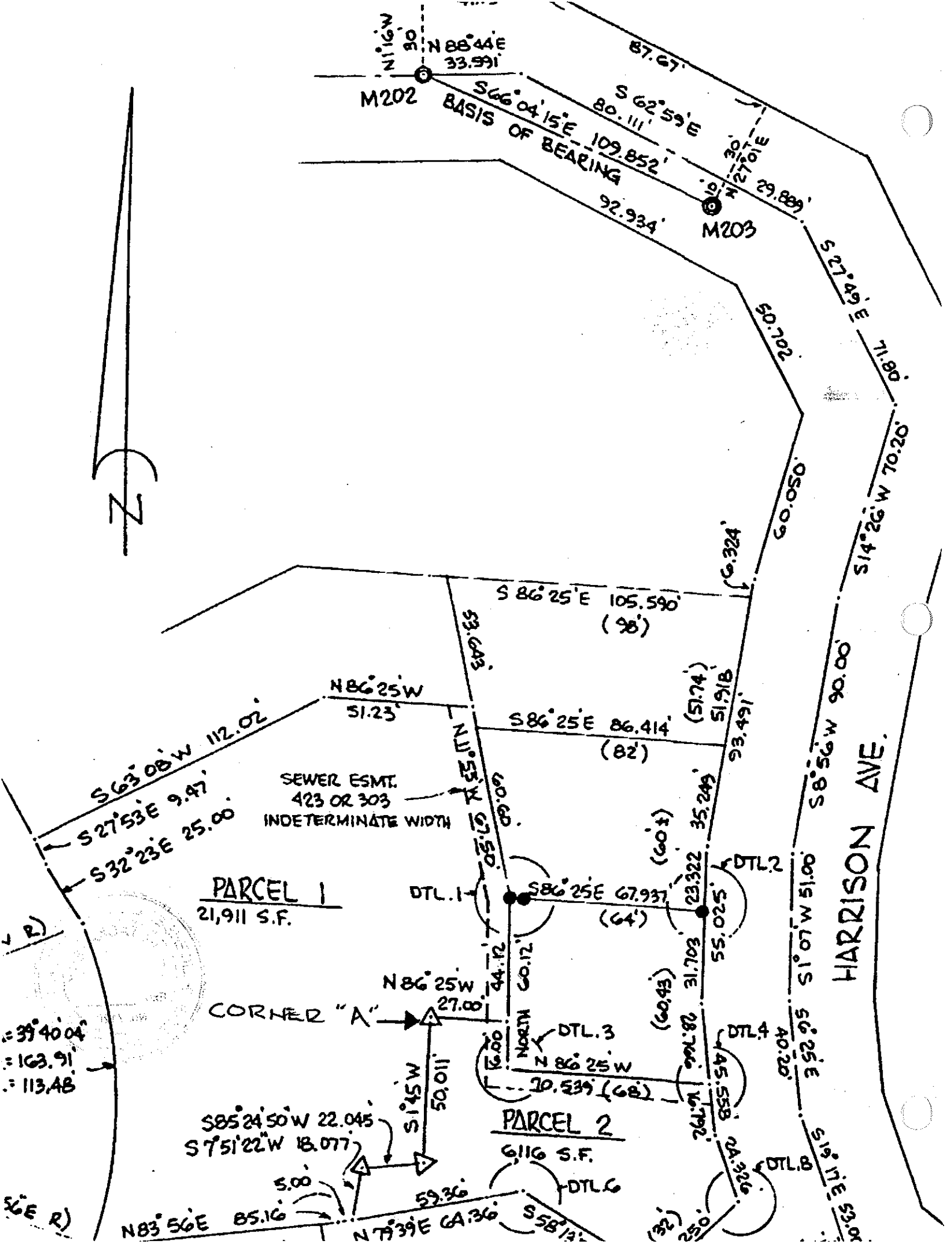
COUNTY SURVEYOR'S STATEMENT

This Corner Record was received APRIL 18, 2001 and examined and filed APRIL 19, 2001

Signed [Signature] Title DEPUTY



County Surveyor's Comment _____



M202
 $N 88^{\circ} 44' E$
 33.991'

$S 66^{\circ} 04' 15'' E$
 109.852'
 BASIS OF BEARING

M203

HARRISON AVE.

PARCEL 1
 21,911 S.F.

PARCEL 2
 6,116 S.F.

CORNER "A"

SEWER ESMT.
 423 OR 303
 INDETERMINATE WIDTH

$39^{\circ} 40' 04''$
 $163.91'$
 $113.48'$

$S 6^{\circ} E$ R)