

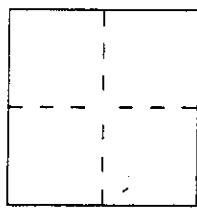
CORNER RECORD

Document Number 65-161-11

City of Sausalito

County of Marin, California

Brief Legal Description 100 Spencer Avenue, AP # 065-161-11, LOT 7 3RM29



CORNER TYPE

- Government Corner
- Meander
- Rancho
- Date of Survey _____
- Control
- Property
- Other

COORDINATES (Optional)

N. _____
 E. _____
 Zone _____ Datum _____
 Elev. _____

Corner — Left as found Found and tagged Established Reestablished Rebuilt

Identification and type of corner found: Evidence used to identify or procedure used to establish or reestablish the corner:

Found original iron pipes from the Record of Survey 19 O.S. 95 and reset one property corner.

A description of the physical condition of the monument as found and as set or reset:

3/4" Iron Pipe with Cap Embossed LS 2897 Found.
1/2" rebar with Cap Embossed LS 5290 Set.

SURVEYOR'S STATEMENT

This Corner Record was prepared by me or under my direction in conformance with the Land Surveyors' Act on November 20th 2000.

Signed David Harp L.S. or R.C.E. Number LS 5290



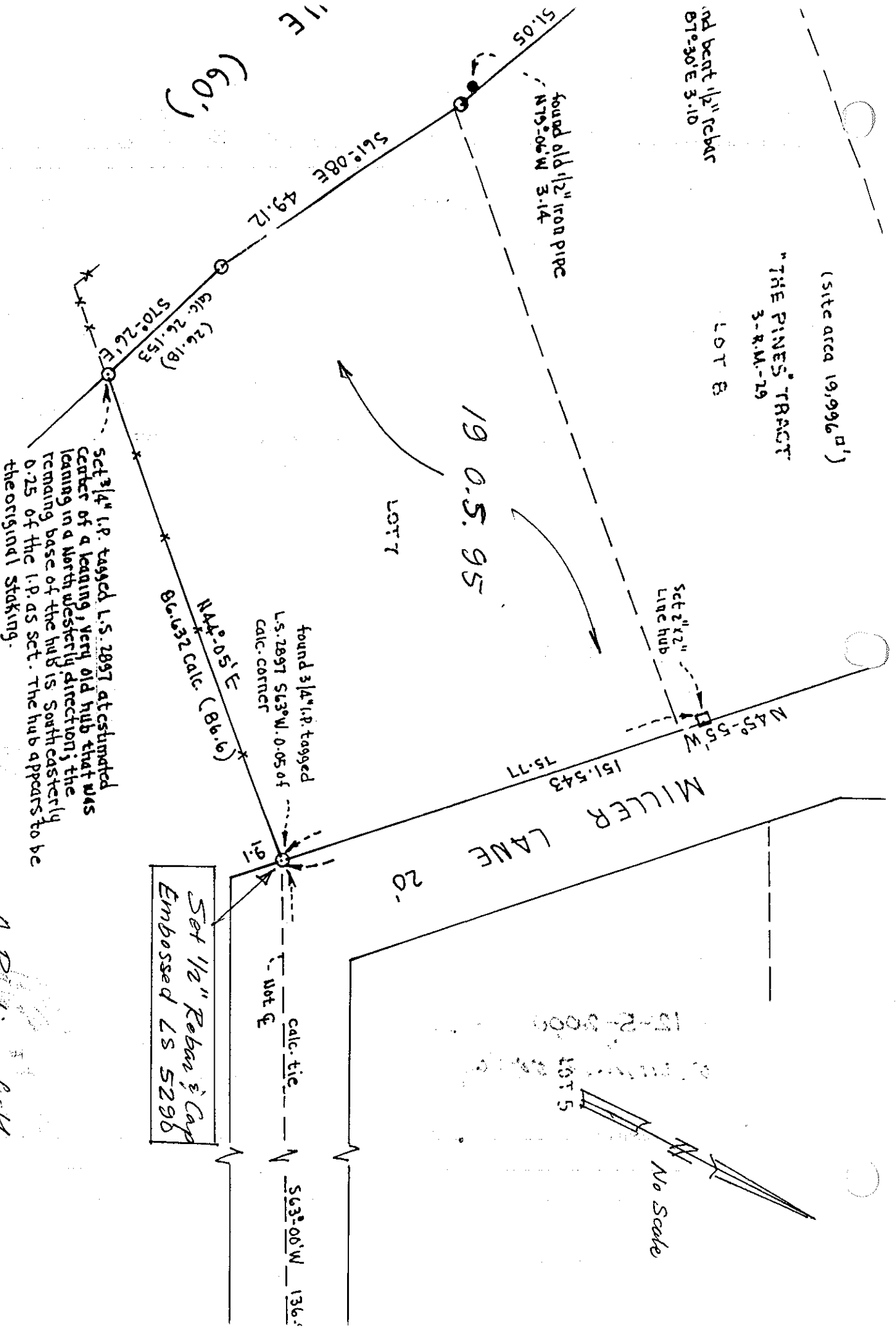
COUNTY SURVEYOR'S STATEMENT

This Corner Record was received 12-4-2000 and examined and filed 12-5-2000.

Signed John M. Woolley Title Deputy



County Surveyor's Comment _____



A Portion of the
 Record of Survey Map
 "19 0.5 95"