

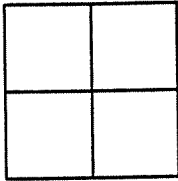
# CORNER RECORD

Document Number \_\_\_\_\_ APN: 065-151-39

City of SAUSALITO

County of Marin State of California.

Brief Legal Description: PARCEL 2-28 0.5.16



**CORNER TYPE:**

Government Corner  Control   
Meander  Property   
Rancho  Other   
Date of Survey \_\_\_\_\_

**COORDINATES:**

[Optional]

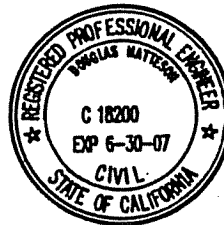
N> \_\_\_\_\_  
E> \_\_\_\_\_  
Zone \_\_\_\_\_ Datum \_\_\_\_\_  
Elev> \_\_\_\_\_

CORNER: ----- Left as found  Found & Tagged  Established  Reestablished  Rebuilt

Identification & Type of Corner Found: Evidence used to identify or procedure used to establish or reestablish the corner:

FOUND MONUMENTS PER OFFICIAL RECORD MAP: AS NOTED ON REVERSE.

A description of the physical condition of the monument as found and as set or reset:  
Original corners not found: Set points as shown on reverse.



**SURVEYOR'S STATEMENT:**

The corner record was prepared by me or under my direction in conformance with the Land Surveyors' Act on SEPT 15 2006

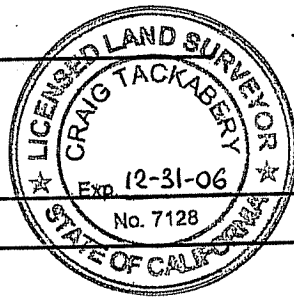
Signed: Douglas J. Matteson RCE# 18200

**COUNTY SURVEYORS STATEMENT:**

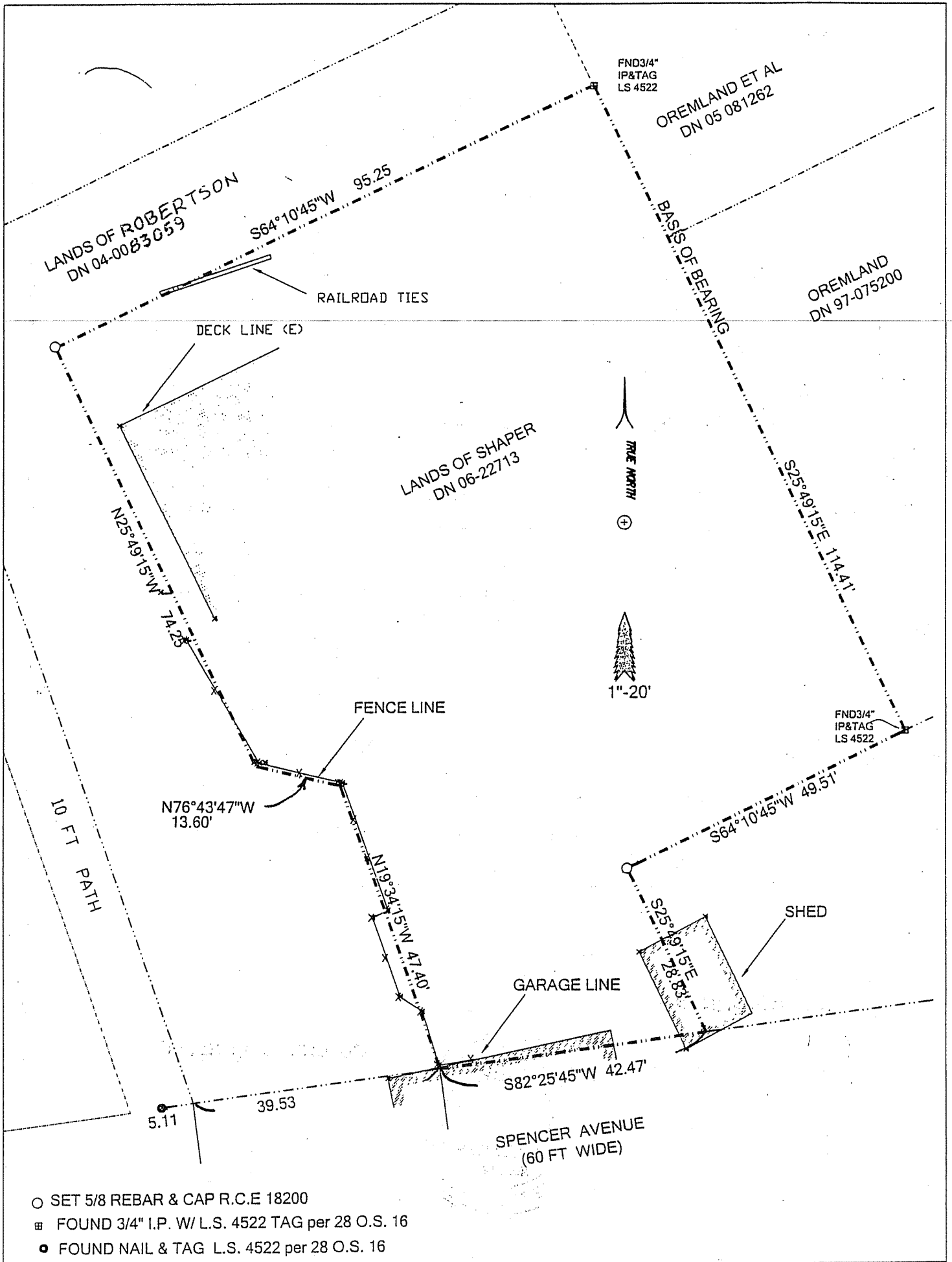
This corner record was received: SEPT. 22 2006

and filed NOVEMBER 9, 2006

Signed: [Signature] Title: COUNTY SURVEYOR



COUNTY SURVEYOR'S COMMENT \_\_\_\_\_



- SET 5/8 REBAR & CAP R.C.E 18200
- FOUND 3/4" I.P. W/L.S. 4522 TAG per 28 O.S. 16
- FOUND NAIL & TAG L.S. 4522 per 28 O.S. 16