

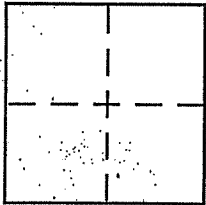
CORNER RECORD

Document Number D.N. 04-083059

City of SAUSALITO

County of MARIN, California

Brief Legal Description PARCEL 1, 28 05 16; PORTION LOT 14, BLOCK 31, RACK 1, PULL 9



CORNER TYPE

- Government Corner Control
- Meander Property
- Rancho Other
- Date of Survey _____

COORDINATES (Optional)

N. _____
 E. _____
 Zone: _____ NAD27 NAD83
 NAD83 Epoch _____
 Elev. _____
 Vert. Datum: NGVD29 NAVD88
 Meas. Units: Metric Imperial

Corner - Left as found Found and tagged Established Reestablished Rebuilt

Identification and type of corner found: Evidence used to identify or procedure used to establish or reestablish the corner:

SEE PAGE 2

A. description of the physical condition of the monument as found and as set or reset:

SEE PAGE 2

SURVEYOR'S STATEMENT

This Corner Record was prepared by me or under my direction in conformance with the Land Surveyor's Act on 1-29-12

Signed [Signature] P.L.S or R.C.E. No. 58 of

COUNTY SURVEYOR'S STATEMENT

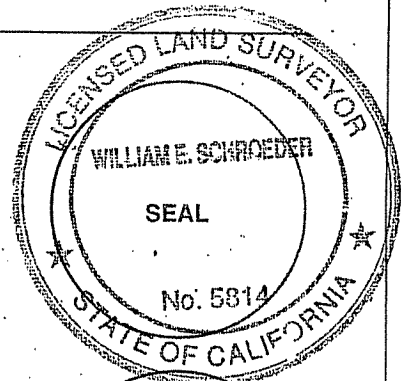
This Corner Record was received FEBRUARY 6, 2012

and examined and filed FEBRUARY 28, 2012

Signed [Signature] P.L.S or R.C.E. No. 7128

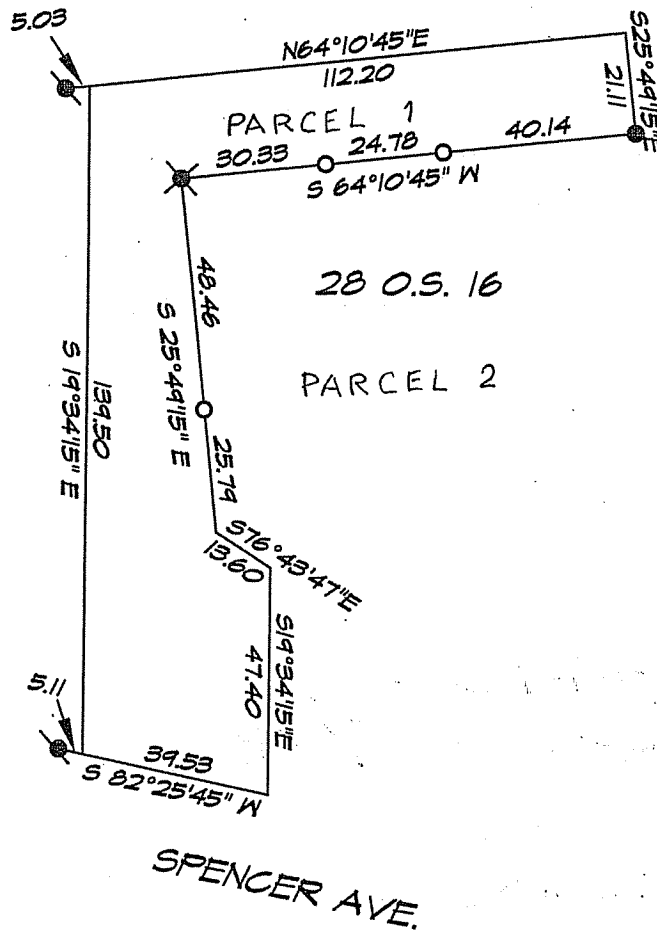
Title COUNTY SURVEYOR

County Surveyor's Comment _____





SCALE 1" = 40'



LEGEND

- = Found 3/4" Iron Pipe/tag "LS 4522"
- = Set 3/4" Iron Pipe/Cap "LS 5814"
- ⊗ = Found Lead Plug & Tag "LS 4522"
- ⊗ = Found Rebar/Cap "RCE 18220"

CORNER RECORD
 LANDS OF ROBERTSON,
 AS SHOWN IN
 BOOK 28 OF SURVEYS AT PAGE 16
 MARIN COUNTY RECORDS
 SAUSALITO, CALIFORNIA
 DECEMBER 2011 SURVEY No.1856
 PREPARED BY

WILLIAM SCHROEDER & ASSOCIATES
 P.O. BOX 6801

SAN RAFAEL CALIFORNIA
 AP # 065-151-38 SHEET 2 OF 2

All distances are in feet and decimals thereof.