

CORNER RECORD

Agency Index

21-022

Document Number

065-141-36

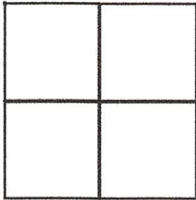
City of SAUSALITO

County of

MARIN

, California

Brief Legal Description Parcel #3, 9 RS 51; I.N. 13-075348



CORNER TYPE

Government Corner Control
Meander Property
Rancho Other

Date of Survey 02/12/2021

COORDINATES (Optional)

N. _____ E. _____

Elevation

Units Metric U.S. Survey Foot

Horizontal Datum _____

Zone _____ Epoch Date _____

Vertical Datum _____

Complies with Public Resources Code §§8801-8819

Complies with Public Resources Code §§8890-8902

PLS Act Ref: 8765(d)

8771

8773

Other:

Corner/Monument: Left as found

Established

Rebuilt

Pre-Construction

Found and tagged

Reestablished

Referenced

Post-Construction

Narrative of corner identified and monument as found, set, reset, replaced, or removed:

See sheet #2 for description (s):

SURVEYOR'S STATEMENT

This Corner Record was prepared by me or under my direction in conformance with the Professional Land Surveyors' Act on February 16, 2021

Signed [Signature] P.L.S. or R.C.E. No. 6649



COUNTY SURVEYOR'S STATEMENT

This Corner Record was received FEB. 25, 2021

and examined and filed APR. 19, 2021

Signed [Signature] P.L.S. or R.C.E. No. 7292

Title DEPUTY C.S.

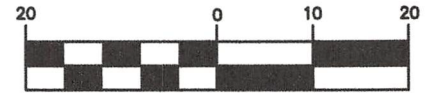


County Surveyor's Comment _____

All distances shown are in feet and decimals thereof

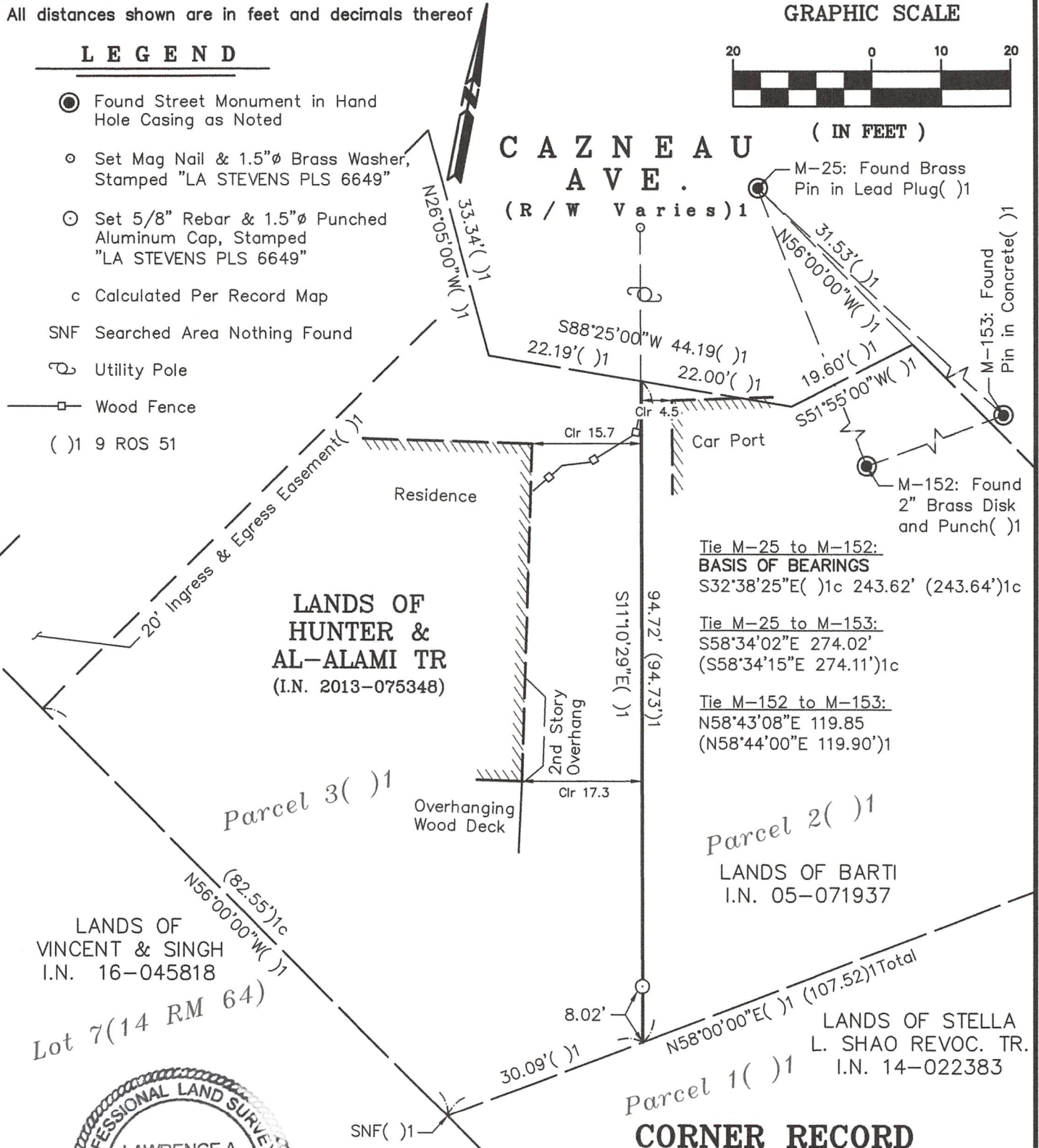
GRAPHIC SCALE

LEGEND



- Found Street Monument in Hand Hole Casing as Noted
- Set Mag Nail & 1.5"φ Brass Washer, Stamped "LA STEVENS PLS 6649"
- Set 5/8" Rebar & 1.5"φ Punched Aluminum Cap, Stamped "LA STEVENS PLS 6649"
- c Calculated Per Record Map
- SNF Searched Area Nothing Found
- Utility Pole
- Wood Fence
- () 1 9 ROS 51

CAZNEAU AVE. (R/W Varies) 1



Tie M-25 to M-152:
 BASIS OF BEARINGS
 S32°38'25"E ()c 243.62' (243.64')1c

Tie M-25 to M-153:
 S58°34'02"E 274.02'
 (S58°34'15"E 274.11')1c

Tie M-152 to M-153:
 N58°43'08"E 119.85
 (N58°44'00"E 119.90')1



2-16-2021

Lawrence A. Stevens, PLS 6649

Copyright © Lawrence A. Stevens 2021

CORNER RECORD LANDS OF HUNTER & AL-ALAMI TR. (Parcel 3, 9 RS 51)

SAUSALITO MARIN COUNTY CALIFORNIA SCALE: 1" = 20' MONTH, YEAR

L.A. Stevens & Associates, Inc.

Professional Land Surveyors * (415) 382-7713 7 Commercial Blvd., Suite 1 * Novato, CA 94949

Job # 212090