

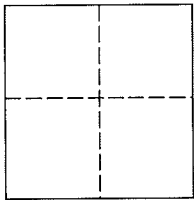
L. A. Stevens & Associates, Inc.
Professional Land Surveyors
Novato, California

Lands of DeRemer & Carlsen
Job #: 12-1438

CORNER RECORD Document Numbers 065-141-27

City of Sausalito, County of Marin, California

Brief Legal Description: Being Lot 1 of that certain map entitled "Map of the Glen Subdivision"; recorded in Volume 14 of Maps at Page 64, Marin County Records



CORNER TYPE

COORDINATES (Optional)

Government Corner Control

Meander Property

Rancho Other

Date of Survey December 27, 2012

N _____

E _____

Zone _____ NAD27 NAD83

NAD 83 Epoch _____

Elev. _____

Vert. Datum: NGVD29 NAVD88

Meas. Units: Metric Imperial

Corner - Left as found Found and tagged Established Reestablished Rebuilt

Identification and type of corner found: Evidence used to identify or procedure used to establish or reestablish the corner:
See Page 2 of 2.

A description of the physical condition of the monument as found and as set or reset:
See Page 2 of 2.

SURVEYOR'S STATEMENT

This Corner Record was prepared by me or under my direction in conformance with
The Land Surveyor's Act on February 26, 2013.

Signed [Signature] P.L.S 6649



COUNTY SURVEYOR'S STATEMENT

This Corner Record was received MARCH 4, 2013

and examined and filed APRIL 17, 2013

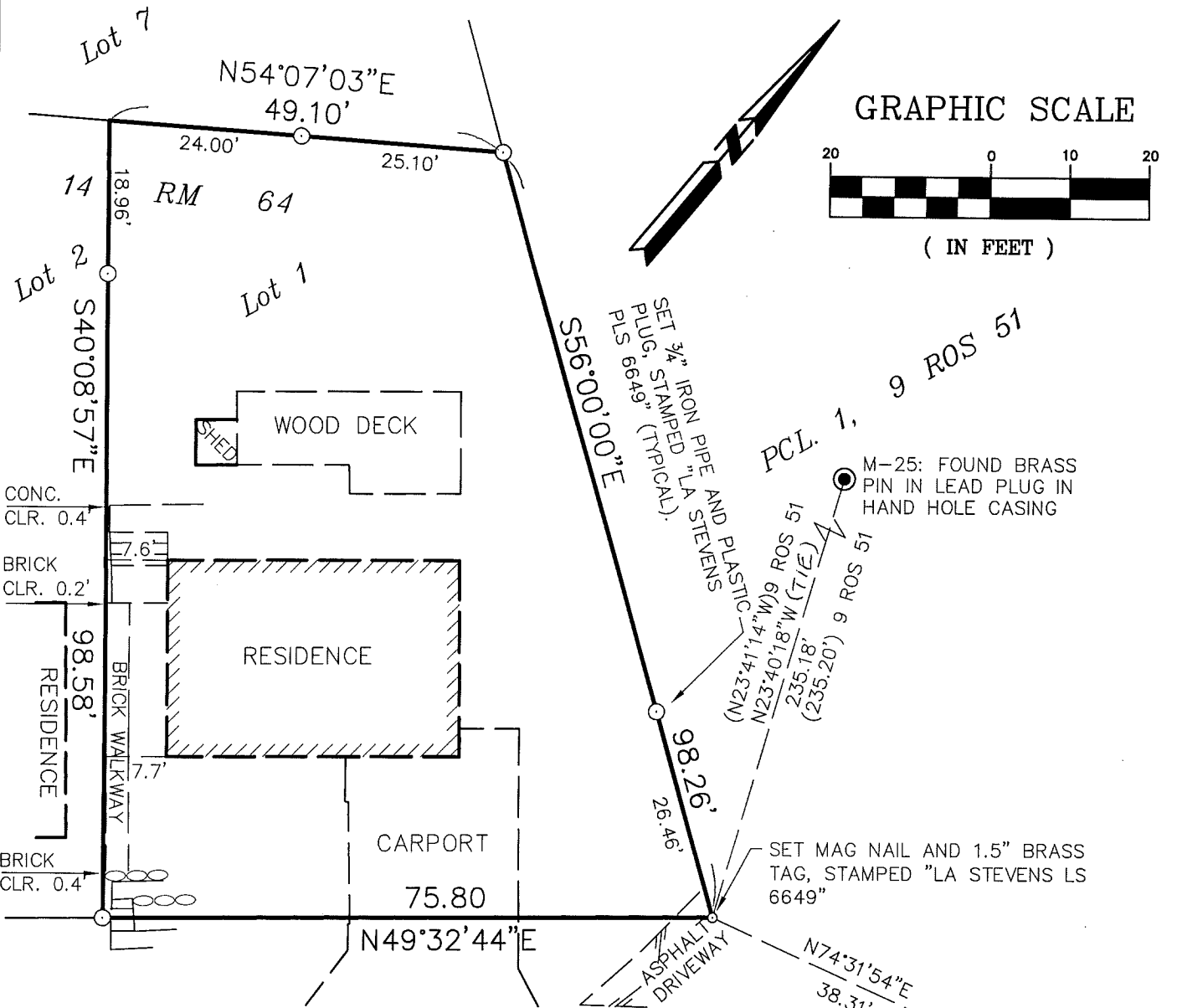
Signed [Signature] P.L.S. or R.C.E. No. 7821

Title DEPUTY COUNTY SURVEYOR

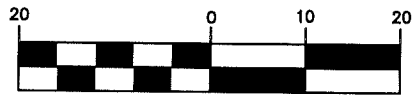
County Surveyors' Comment _____



All distances shown are in feet and decimals thereof



GRAPHIC SCALE



(IN FEET)

G l e n D r i v e



2-25-13

Plat of Survey Lands of DeRemer & Carlsen

(Lot 1, 14 RM 64)

Sausalito Marin County California
Scale: 1" = 20' January 2013

L.A. Stevens & Associates, Inc.

Professional Land Surveyors * (415) 382-7713
7 Commercial Blvd., Suite 1 * Novato, CA 94949

Lawrence A. Stevens, PLS 6649
Copyright © Lawrence A. Stevens 2013