

CORNER RECORD

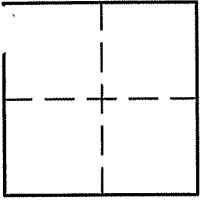
Document Number A.P.# 065-122-08

City of SAUSALITO

County of MARIN, California

Brief Legal Description PARCEL 2 PER 17 P.M. 59

CORNER TYPE COORDINATES (Optional)



Government Corner Control
Meander Property
Rancho Other
Date of Survey 10/15/05

N. _____
E. _____
Zone _____ NAD27 NAD83
NAD83 Epoch _____
Elev. _____
Vert. Datum: NGVD29 NAVD88
Meas. Units: Metric Imperial

Corner- Left as found Found and tagged Established Reestablished Rebuilt

Identification and type of corner found: Evidence used to identify or procedure used to establish or reestablish the corner:
REESTABLISHED PARCEL 2 PER 17 P.M. 59 FROM THE STREET MONUMENTS M-27 AND M-28 ON
SANTA ROSA AVE. FOUND POINT AS SHOWN ON SHEET 2.

A description of the physical condition of the monument as found and as set or reset: SEE SHEET 2.

SURVEYOR'S STATEMENT

This Corner Record was prepared by me or under my direction in conformance with
the Land Surveyor's Act on DECEMBER 4 2009
Signed Lawrence P. Doyle P.L.S. or R.C.E. No. P.L.S. 4694

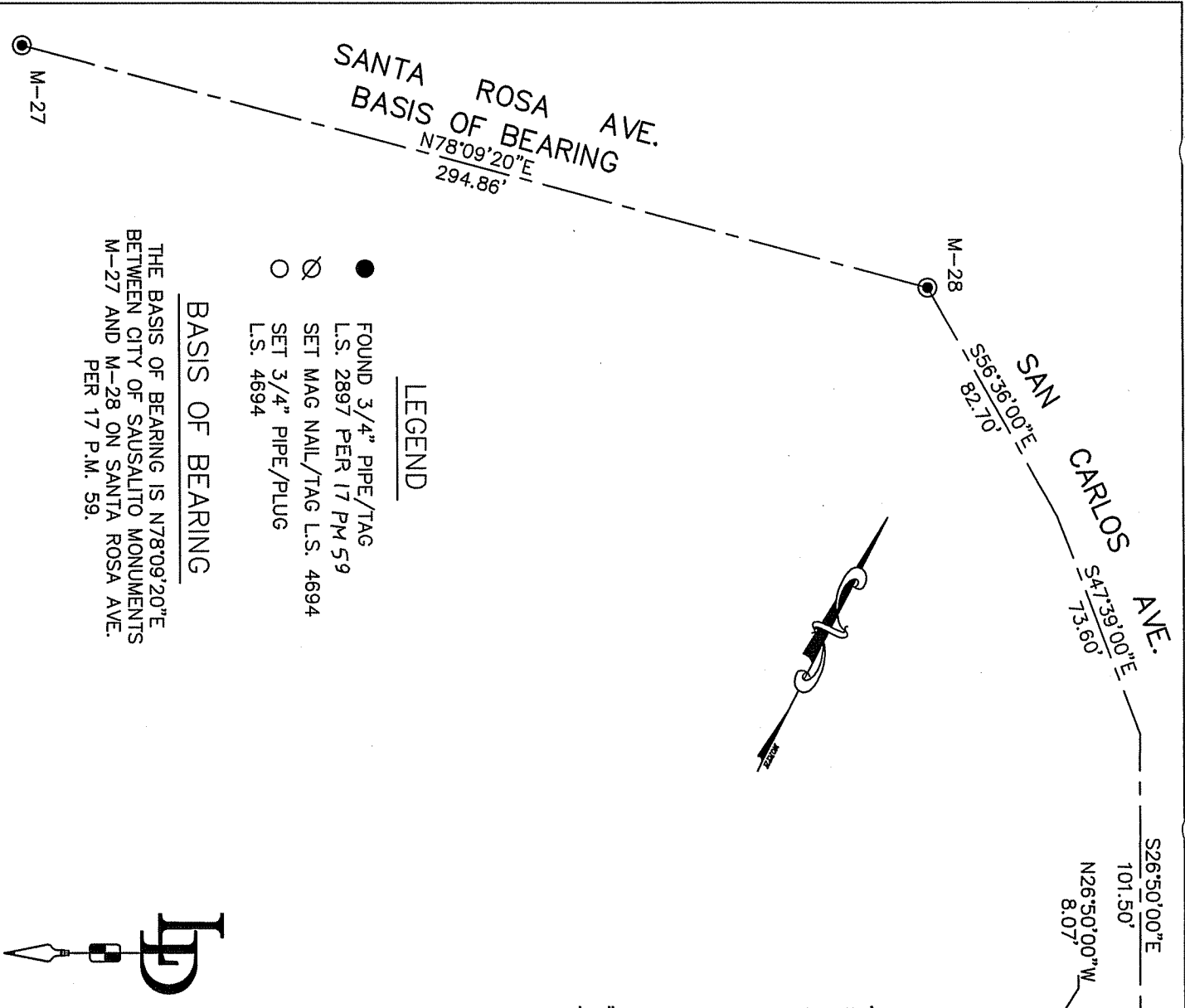


COUNTY SURVEYOR'S STATEMENT

This Corner Record was received DECEMBER 10, 2008
and examined and filed JANUARY 7, 2009
Signed [Signature] P.L.S. or R.C.E. No. 7128
Title COUNTY SURVEYOR



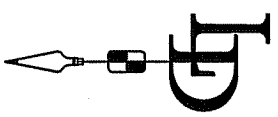
County Surveyor's Comment _____



- LEGEND**
- FOUND 3/4" PIPE/TAG
L.S. 2897 PER 17 PM 59
 - ⊗ SET MAG NAIL/TAG L.S. 4694
 - SET 3/4" PIPE/PLUG
L.S. 4694

BASIS OF BEARING

THE BASIS OF BEARING IS N78°09'20"E
BETWEEN CITY OF SAUSALITO MONUMENTS
M-27 AND M-28 ON SANTA ROSA AVE.
PER 17 P.M. 59.



CORNER RECORD	
PARCEL 2 / 17 P.M. 59	
SAUSALITO	CALIFORNIA
MARIN COUNTY	
LAWRENCE P. DOYLE	
LAND SURVEYOR/CIVIL ENGINEER	
P.O. BOX 1609 MILL VALLEY CA 94942 (415-388-9585)	
SCALE: 1" = 50'	DRAWN BY:
DATE: 10/2005	SHEET 2 OF 2
DRAWING NO.	