

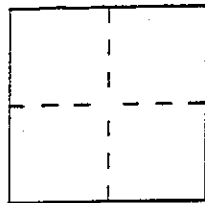
CORNER RECORD

Document Number APN 65-121-14

City of SAUSALITO

County of MARIN, California

Brief Legal Description D.N. 91-501-64



CORNER TYPE

Government Corner Control
 Meander Property
 Rancho Other
 Date of Survey _____

COORDINATES (Optional)

N. _____
 E. _____
 Zone _____ Datum _____
 Elev. _____

Corner — Left as found Found and tagged Established Reestablished Rebuilt

Identification and type of corner found: Evidence used to identify or procedure used to establish or reestablish the corner:
Found Southerly corners as established by 2 OS 104 and reset the Westerly Boundary
Corners of said parcel.

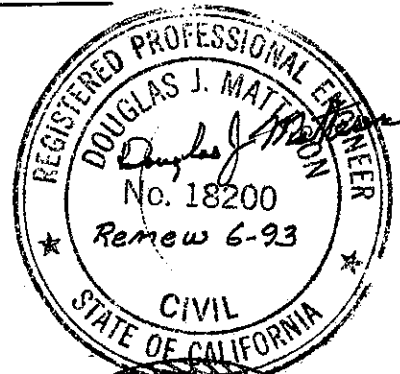
A description of the physical condition of the monument as found and as set or reset:
Set 5/8" Rebar and Plastic cap #RCE 18200

SAUSALITO, MILLER AVE.

SURVEYOR'S STATEMENT

This Corner Record was prepared by me or under my direction in conformance with
 the Land Surveyors' Act on March 3 1993.

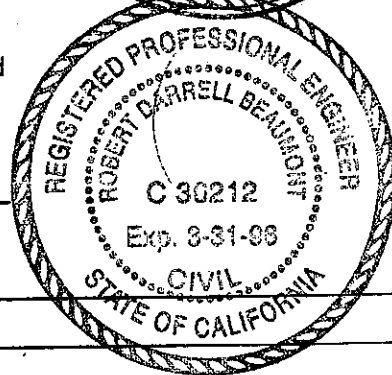
Signed Douglas J. Matheson L.S. or R.C.E. Number 18200



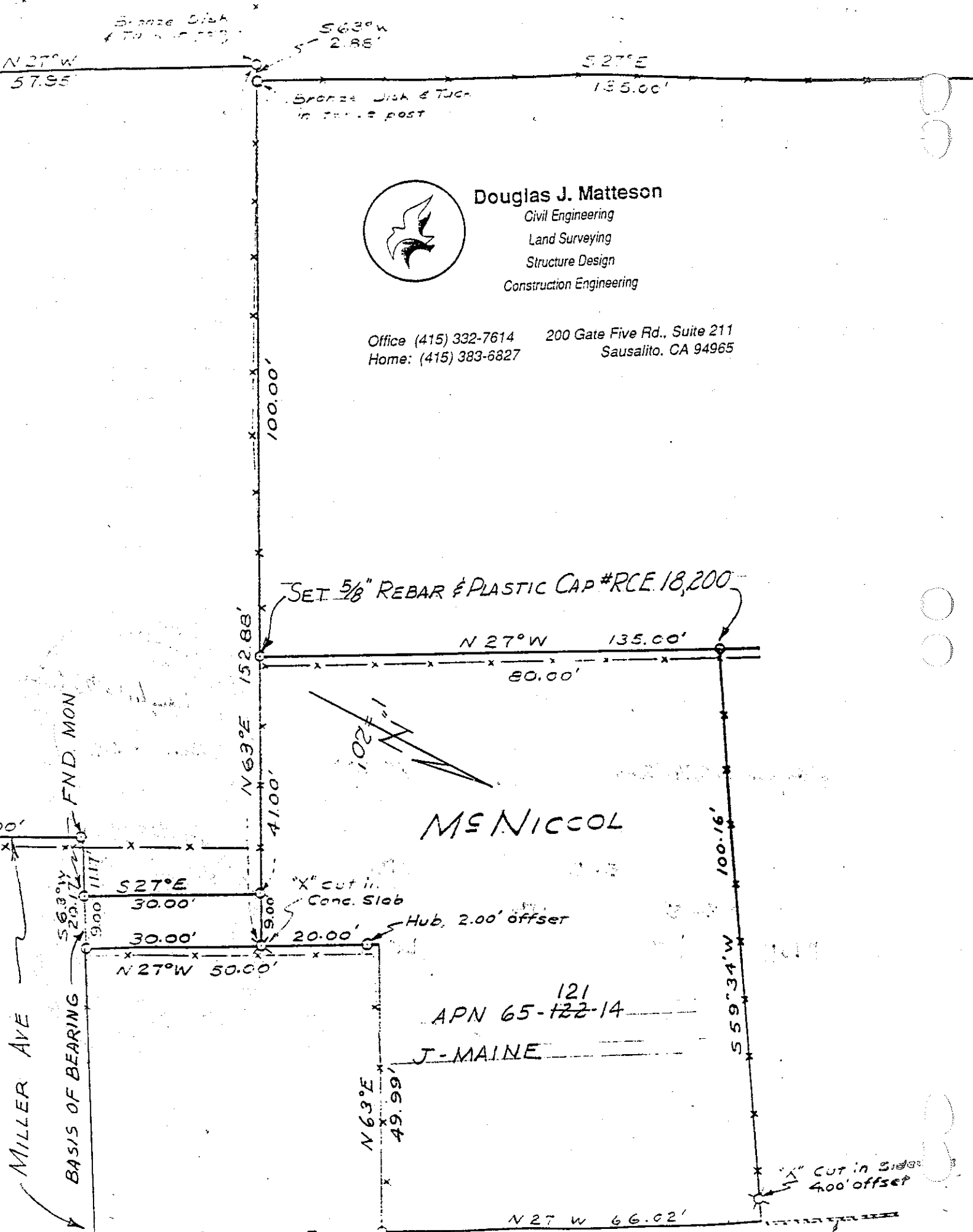
COUNTY SURVEYOR'S STATEMENT

This Corner Record was received 3-5 1993 and examined
 and filed 3-5 1993.

Signed RDR Title DCS



County Surveyor's Comment _____



N 27° W
57.95'

S 27° E
135.00'

S 63° W
2.85'

Bronze Disk & Tube
in 2" hole post



Douglas J. Matteson
Civil Engineering
Land Surveying
Structure Design
Construction Engineering

Office (415) 332-7614 200 Gate Five Rd., Suite 211
Home: (415) 383-6827 Sausalito, CA 94965

SET 5/8" REBAR & PLASTIC CAP #RCE 18,200

N 27° W 135.00'
80.00'

N 63° E 152.88'
41.00'

MS NICCOL

MILLER AVE
BASIS OF BEARING
FND. MON.

S 27° E
30.00'

30.00'

N 27° W 50.00'

9" cut in
Conc. Slab

20.00'

Hub, 2.00' offset

121
APN 65-122-14

J-MAINE

N 63° E
49.99'

100.16'
559.34' W

9" cut in side
400' offset

N 27° W 66.02'