

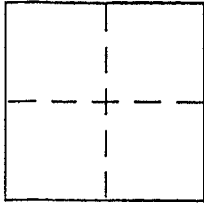
CORNER RECORD

Document Number A.P.N. 065-112-01,02

City of SAUSALITO

County of MARIN, California

Brief Legal Description PTN. LOT 6, BLOCK 30 PER RACK 1 PULL 9 (REF: 2001 MAPS 240)



CORNER TYPE

Government Corner Control
Meander Property
Rancho Other
Date of Survey 7-20-04

COORDINATES (Optional)

N. _____
E. _____
Zone _____ NAD27 NAD83
NAD83 Epoch _____
Elev. _____
Vert. Datum: NGVD29 NAVD88
Meas. Units: Metric Imperial

Corner - Left as found Found and tagged Established Reestablished Rebuilt

Identification and type of corner found: Evidence used to identify or procedure used to establish or reestablish the corner:

= SEE OVER =

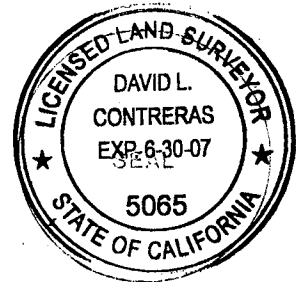
A description of the physical condition of the monument as found and as set or reset:

= SEE OVER =

SURVEYOR'S STATEMENT

This Corner Record was prepared by me or under my direction in conformance with the Land Surveyor's Act on JULY 21, 2004

Signed David Contreras P.L.S. or R.C.E. No. 5065



COUNTY SURVEYOR'S STATEMENT

This Corner Record was received JULY 30, 2004

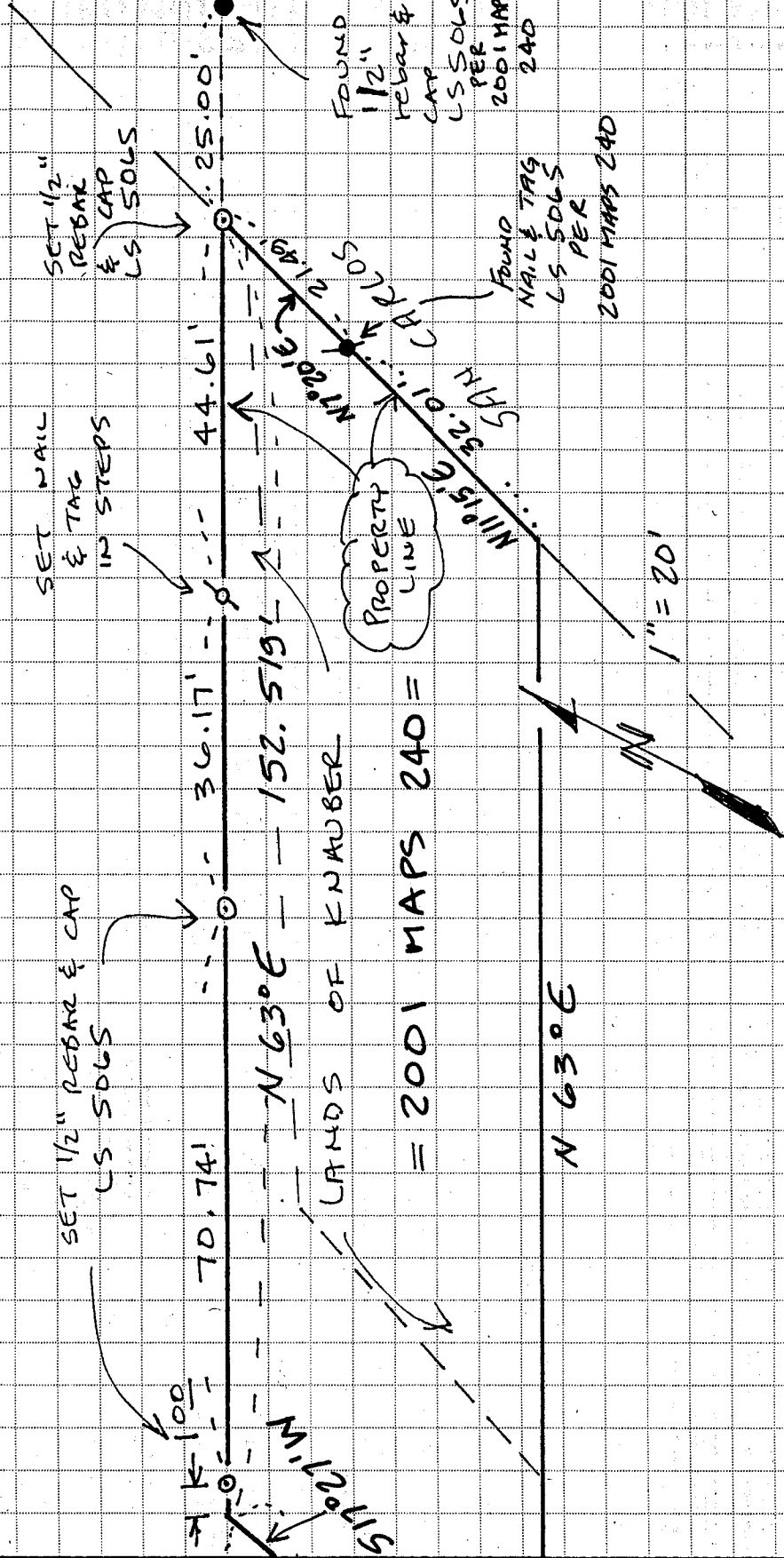
and examined and filed AUGUST 26, 2004

Signed Craig Tackabery P.L.S. or R.C.E. No. 7128

Title COUNTY SURVEYOR



County Surveyor's Comment _____



STAKING OF NORTHERLY BOUNDARY

SEE
DETAIL

