

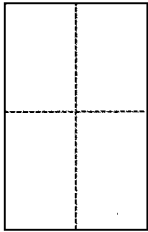
CORNER RECORD

Document Number APN 065-103-11

City of Sausalito

County of Marin, California

Brief Legal Description Ptn. Lots 5&6, Block 33, Rack 1, Pull 9, Marin County Records.



CORNER TYPE

Government Corner Control
Meaneder Property
Rancho Other
Date of Survey 9/22/2015

COORDINATES (Optional)

N. _____
E. _____
Zone NAD27 NAD83
NAD83 Epoch _____
Elev. _____
Vert. Datum: NGVD29 NAVD88
Meas. Units: Metric Imperial

Corner - Left as found Found and tagged Established Reestablished Rebuilt

Identification and type of corner found: Evidence used to identify or procedure used to establish or reestablish the corner:

Monuments per Record of Survey Filed in Book 2006 of Maps at Page 133 were found in record position and used to reestablish a point on the southerly line of the lands of Fabes & Barber as shown on said survey.

A description of the physical condition of the monument as found and as set or reset: Set 1/2" iron pipe tagged LS 7237

SURVEYOR'S STATEMENT

This Corner Record was prepared by me or under my direction in conformance with the Land Surveyor's Act on 9/29/2015
Signed Michael E. Ford P.L.S. or R.C.E. No. PLS 7237

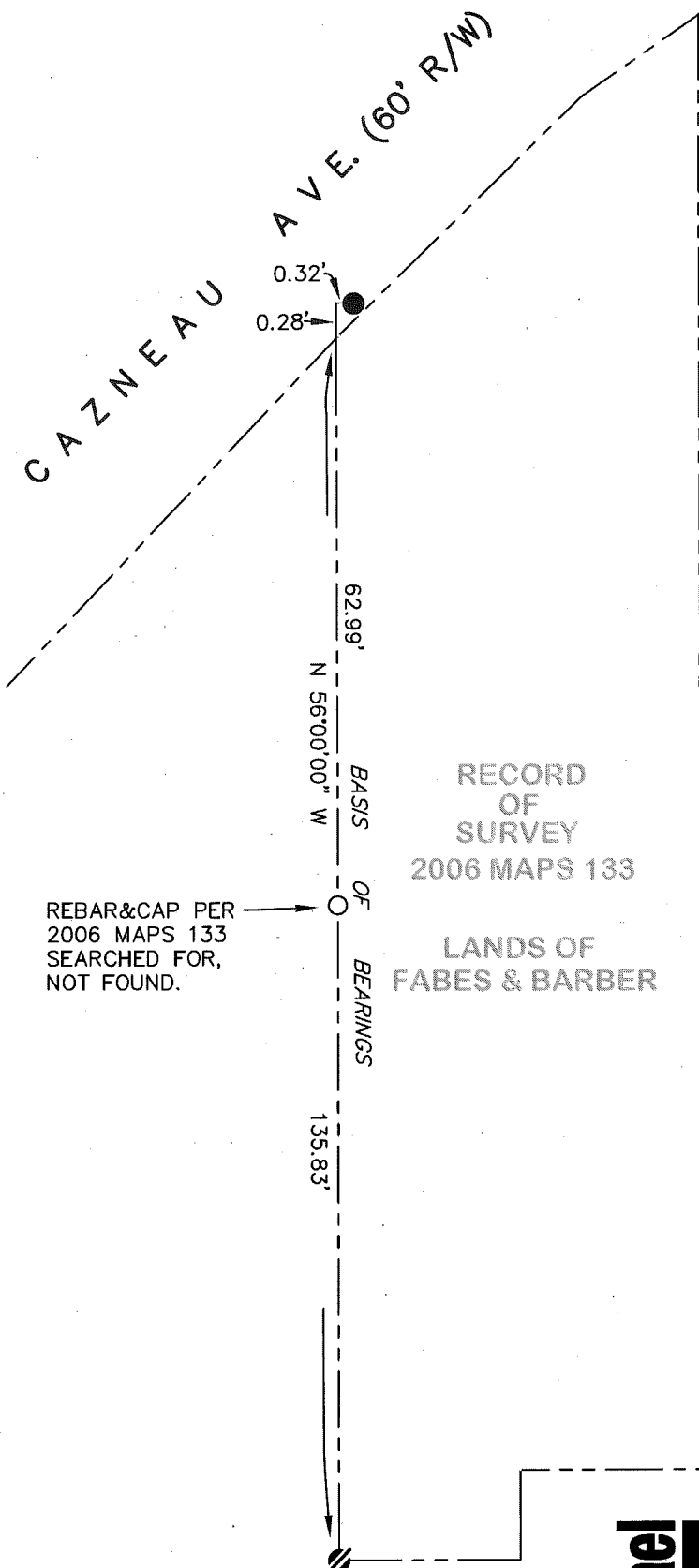


COUNTY SURVEYOR'S STATEMENT

This Corner Record was received OCTOBER 1, 2015
and examined and filed DECEMBER 3, 2015
Signed Paul Smit P.L.S. or R.C.E. No. 7821
Title County Surveyor



County Surveyor's Comment



NOTE

ALL COURSES SHOWN HEREON ARE RECORD AND MEASURED PER RECORD OF SURVEY FILED IN BOOK 2006 OF MAPS AT PAGE 133, MARIN COUNTY RECORDS.

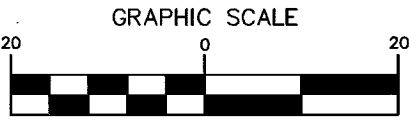
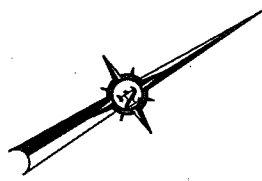
LEGEND

- FOUND 2" IRON PIPE WITH PLUG AND NAIL PER 2006 MAPS 133.
- ▨ FOUND 5/8" REBAR & CAP P.L.S. 7053 PER 2006 MAPS 133.
- SET 1/2" IRON PIPE, LS 7237

BASIS OF BEARINGS

RECORD OF SURVEY FILED IN BOOK 2006 OF MAPS AT PAGE 133, MARIN COUNTY RECORDS.

REBAR&CAP PER 2006 MAPS 133 SEARCHED FOR, NOT FOUND.



(IN FEET)
1 inch = 20 ft.



2300 bethards drive, suite J
 santa rosa, california 95405
 p 707.542.8513 - f 707.542.1825
 www.michaelfordinc.com