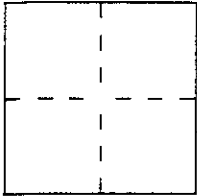


CORNER RECORD

Document Number 65-101-35

City of SAUSALITO County of MARIN, California

Brief Legal Description NORTHEASTERLY CORNER PARCEL 1, 25 P.M. 46.



CORNER TYPE

Government Corner Control
 Meander Property
 Rancho Other
 Date of Survey APRIL 19, 1994

COORDINATES (Optional)

N. _____
 E. _____
 Zone _____ Datum _____
 Elev. _____

Corner — Left as found Found and tagged Established Reestablished Rebuilt

Identification and type of corner found: Evidence used to identify or procedure used to establish or reestablish the corner:

FOUND 1/2" IRON PIPES, TAGGED LS 3890 ALONG THE SOUTHWESTERLY LINE OF
PARCEL 1 AS PER 25 PM 46. HELD FOR ESTABLISHING POSITION OF THE NORTH-
EASTERLY CORNER OF PARCEL 1, 25 PM 46.

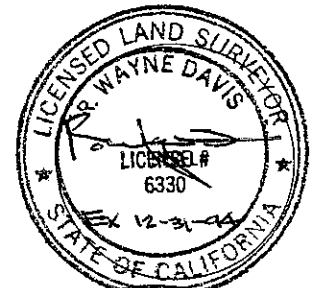
A description of the physical condition of the monument as found and as set or reset:

SET NAIL AND TAG, LS 6330, IN BASE OF CONCRETE FOOTING.

SURVEYOR'S STATEMENT

This Corner Record was prepared by me or under my direction in conformance with
 the Land Surveyors' Act on MAY 2, 1994.

Signed [Signature] L.S. or R.C.E. Number LS 6330



COUNTY SURVEYOR'S STATEMENT

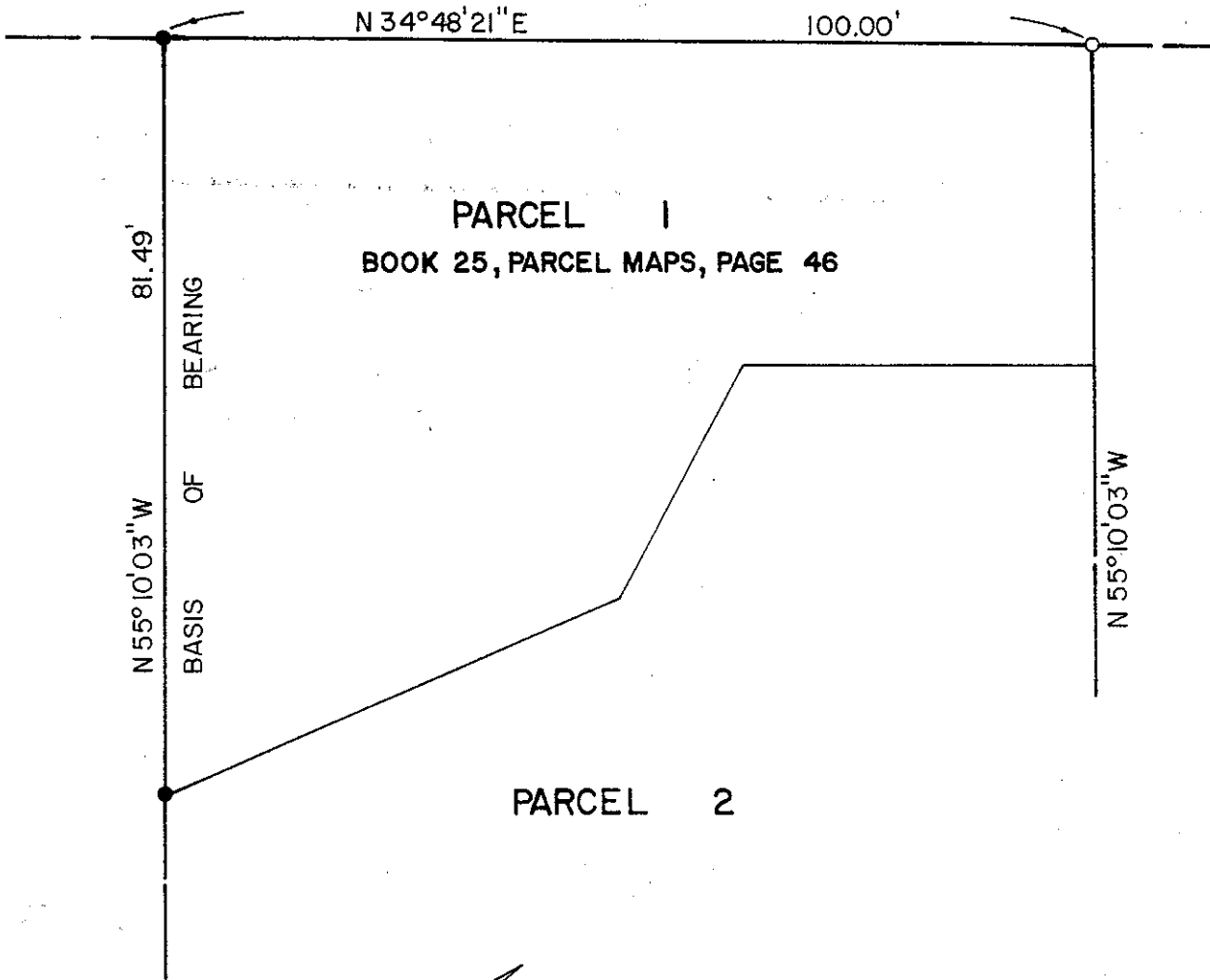
This Corner Record was received S-27 1994 and examined
 and filed S-27 1994.

Signed [Signature] Title DCS



County Surveyor's Comment _____

LOCUST ROAD



R. W. DAVIS & ASSOCIATES
1810 GRANT AVE. SUITE 102
NOVATO, CA 94945

A.P. 65-101-35