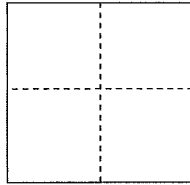


# CORNER RECORD

Documented Number 065-101-24

City of Sausalito County of Marin, California

Brief Legal Description Marin County APN 065-101-24



### CORNER TYPE

Government Corner  Control   
Meander  Property   
Rancho  Other

### COORDINATES(Optional)

N. \_\_\_\_\_  
E. \_\_\_\_\_  
Zone \_\_\_\_\_ NAD27  NAD83   
NAD83 Epoch \_\_\_\_\_  
Elevation \_\_\_\_\_  
Vert. Datum: NGVD 29  NADV88   
Meas. Units: Metric  Imperial

Date of Survey 09/28-30/2016

Corner- Left as found  Found and tagged  Established  Reestablished  Rebuilt

Identification and type of corner found: Evidence used to identify or procedure used to establish or reestablish the corner:

**Reestablish the Southerly lot line of APN 065-101-24 as said line is shown upon that certain Record of Survey filed March 11, 2002 in Book 2002 of Maps at Page 48, Marin County Records. The Southerly line was reestablished from found survey markers depicted upon said Map and also from found survey markers depicted upon that certain Record of Survey filed October 15, 2001 in Book 2001 of Maps at Page 197, Marin County Records. See sketch on reverse side for details.**

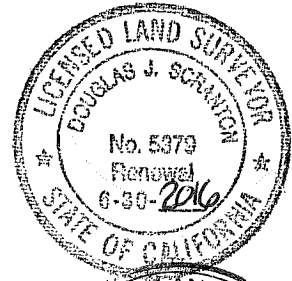
A description of the physical condition of the monument as found and as set or reset: Set brass nail with brass tag stamped "PLS 5379" flush on the Southerly face of the existing house framing corners which are adjacent to the said Southerly line. See sketch on reverse side for details.

### SURVEYOR'S STATEMENT

This Corner Record was prepared by me or under my direction in conformance with

the Land Surveyor's Act on October 6, 2016

Signed Douglas J. Scranton P.L.S. or R.C.E. No.: PLS 5379



### COUNTY SURVEYOR'S STATEMENT

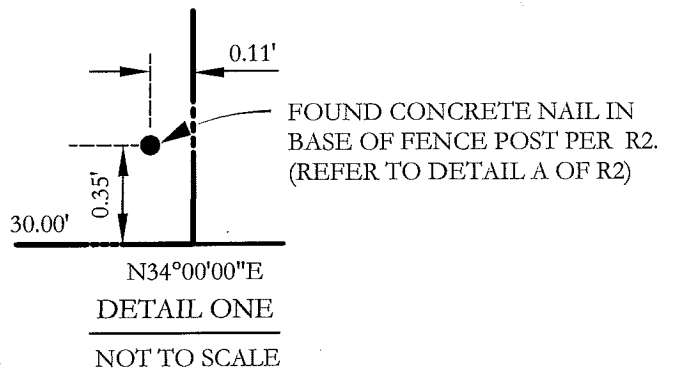
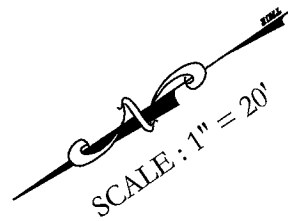
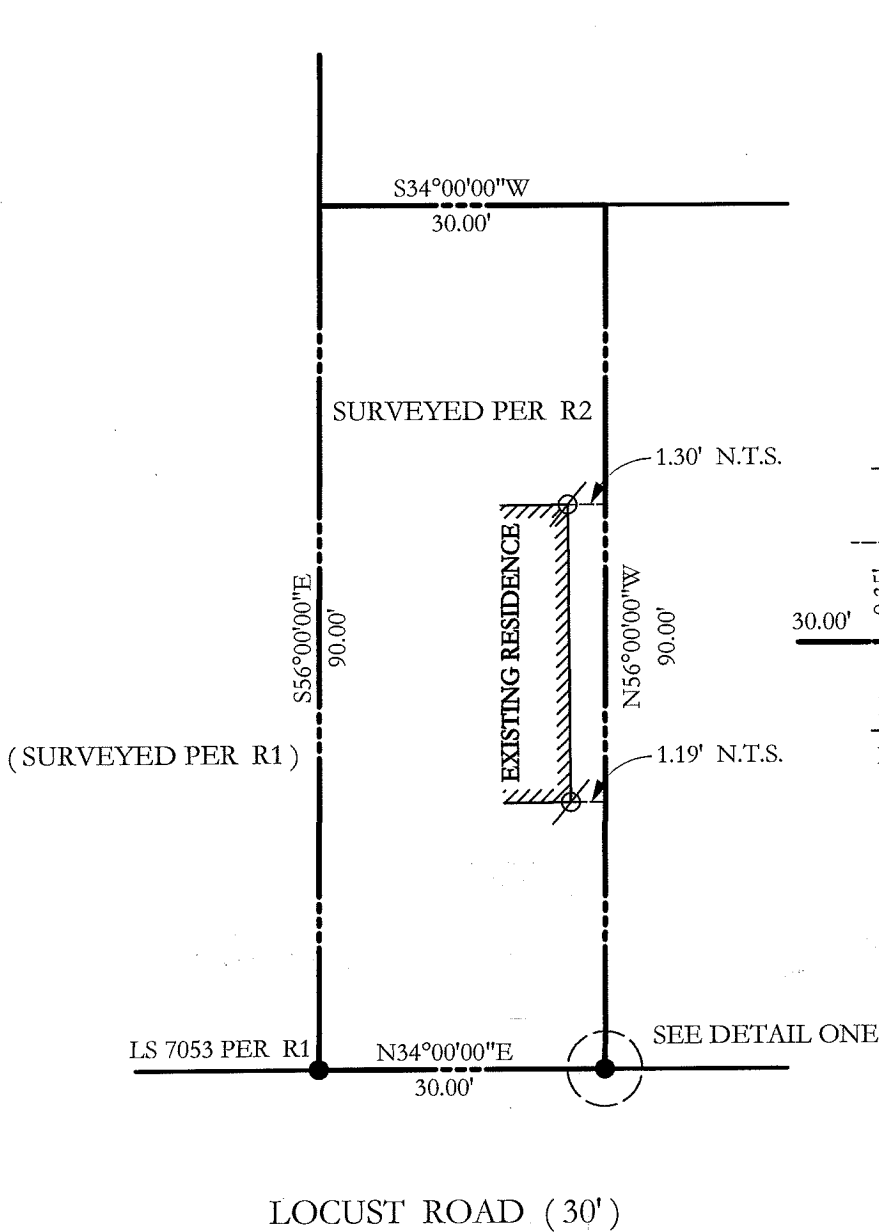
This Corner Record was received October 11, 2016 and examined  
and filed 1/18/2017

Signed T.W. Park P.L.S. or R.C.E. No.: 8176

Title COUNTY SURVEYOR

County Surveyor's Comment \_\_\_\_\_





LS 7053 PER R1      N34°00'00"E      SEE DETAIL ONE  
30.00'

LOCUST ROAD (30')

LEGEND

- FOUND MONUMENTATION AS NOTED
- ⊗ SET BRASS NAIL AND BRASS TAGS 5379 ON THE FACE OF WOOD FRAMING CORNER

N.T.S. NOT TO SCALE

NO EASEMENTS ARE SHOWN

ALL DISTANCES GIVEN IN FEET AND DECIMALS THEREOF

BASIS OF BEARINGS

TAKEN AS SOUTH 19°25'54" EAST (CALCULATED) BETWEEN STANDARD STREET MONUMENTS M-93 TO M-40 AS SHOWN UPON R1.

REFERENCES

- R1 2001 MAPS 197
- R2 2002 MAPS 48