

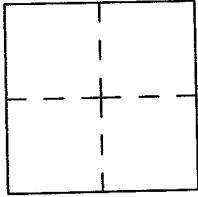
# CORNER RECORD

Document number A.P.N. 065-092-44

City of SAUSALITO

County of MARIN, California

Brief Legal Description "LANDS OF JONES" AS SHOWN UPON RECORD OF SURVEY  
8 O.S. 36, MARIN COUNTY RECORDS



### CORNER TYPE

Government Corner  Control   
 Meander  Property   
 Rancho  Other   
 Date of Survey \_\_\_\_\_

### COORDINATES

N. \_\_\_\_\_  
 E. \_\_\_\_\_  
 Zone \_\_\_\_\_ Datum \_\_\_\_\_  
 Elev. \_\_\_\_\_

Corner-- Left as found  found and tagged  Established  Reestablished  Rebuilt

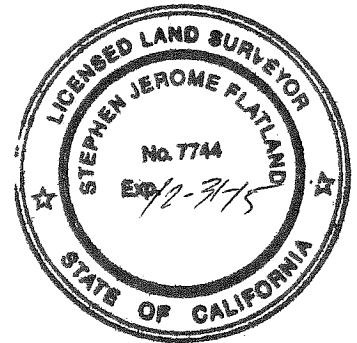
Identification and type of corner found: Evidence used to identify or procedure used to establish or reestablish the corner:  
UTILIZED MONUMENTS AS SHOWN UPON 8 O.S. 36 AS A BASIS OF  
BEARINGS TO MONUMENT NORTHEASTERLY LINE OF "LANDS OF JONES" SHOWN  
UPON SAID MAP.

A description of the physical condition of the monument as found and as set or reset.  
3/4" IRON PIPE MONUMENT, R.C.E. 10057, AND "SET PK NAIL" MEASURED PER 8 O.S. 36  
AND WERE DEEMED UNDISTURBED, AND ARE SHOWN ON THE ATTACHED DIAGRAM.

### SURVEYOR'S STATEMENT

This Corner Record was prepared by me or under my direction in conformance with  
 the Land Surveyor's Act on April 1 2014.

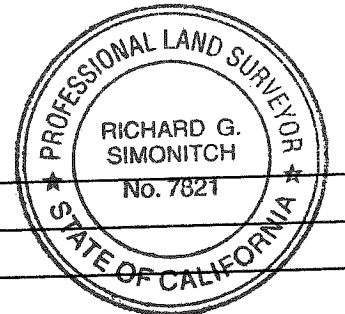
Signed [Signature] L.S. Number 7744



### COUNTY SURVEYOR'S STATEMENT

This Corner Record was received APRIL 19 2014 and examined  
 and filed July 8<sup>th</sup> 2014 20  

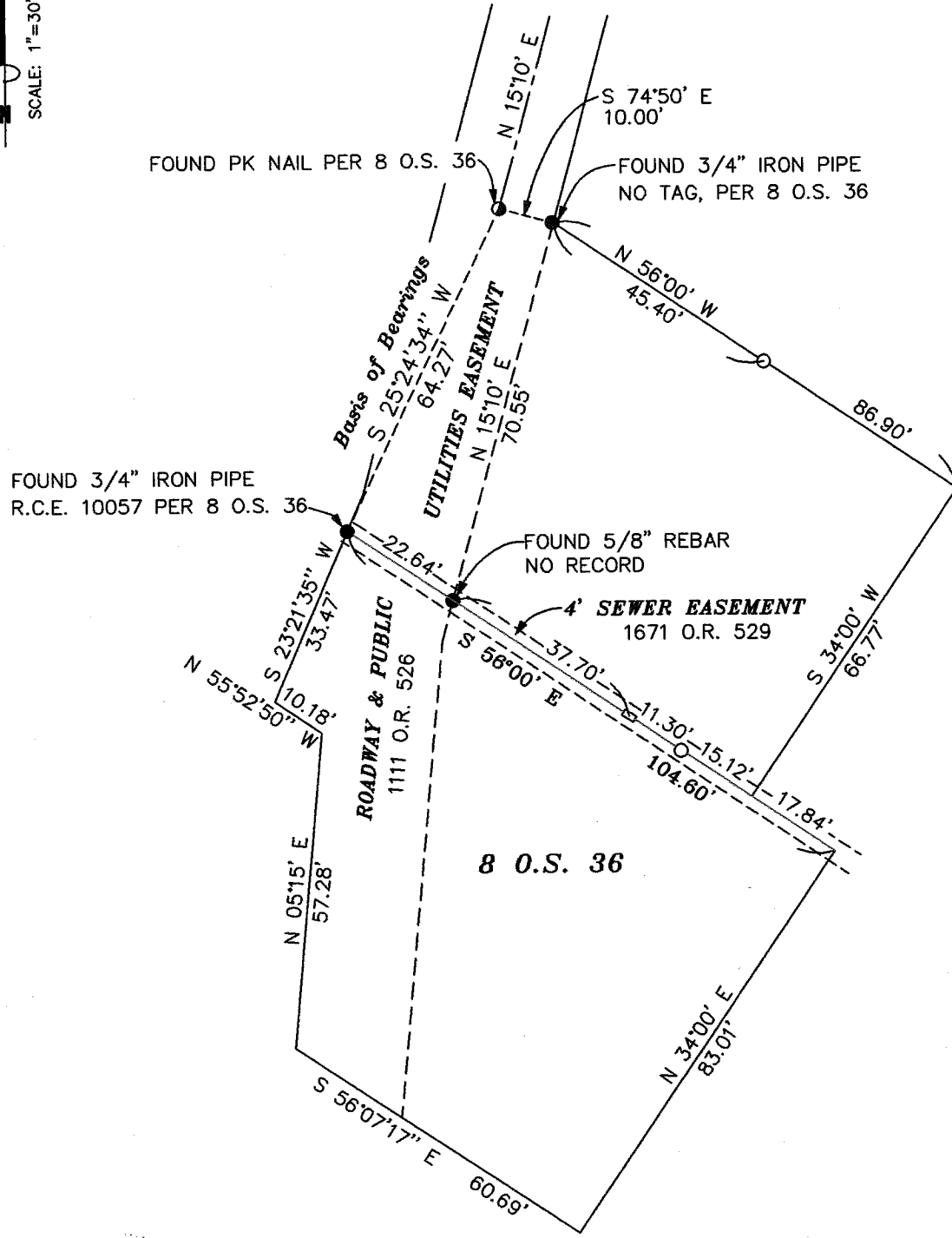
Signed [Signature] Title DEPUTY



County Surveyor's Comment \_\_\_\_\_  
 \_\_\_\_\_  
 \_\_\_\_\_



SCALE: 1"=30'



- FOUND MONUMENT PER 8 O.S. 36 AS SHOWN
- SET 1/2" REBAR & CAP P.L.S. 7744
- SET 1"x2" STAKE & TAG P.L.S. 7744