

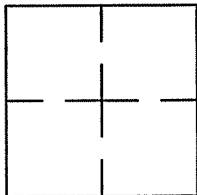
CORNER RECORD

Document Number APN 65-084-10 #17

City of Sausalito

County of Marin, California

Brief Legal Description Centerline of Johnson Street as shown on the record of Survey filed in Book 2005 of Maps, at Page 173
Marin County Records.



CORNER TYPE

Government Corner Control
Meander Property
Rancho Other
Date of Survey JULY 9, 2010

COORDINATES (Optional)

N. _____
E. _____
Zone _____ Datum _____
Elev. _____
Vert. Datum: NGVD29 NAVD88
Meas. Units: Metric Imperial

Corner — Left as found Found and tagged Established Reestablished Rebuilt

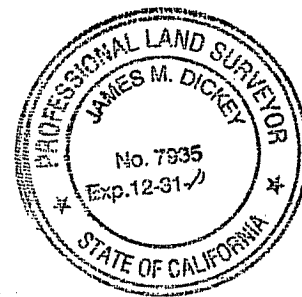
Identification and type of corner found: Evidence used to identify or procedure used to establish or reestablish the corner:
A baseline was established between the existing found monuments at the intersection of Glen Drive and Johnson Street and the intersection of Bonita Street and Johnson Street. Both of the monuments were occupied in order to set the corresponding reference points. The reference points were then occupied in order to reestablish the the monuments along Johnson Street at the intersections of Bonita Street and Glen Drive.

A description of the physical condition of the monument as found and as set or reset: _____
The found monuments were in stable condition.
A 2" Brass Disc stamped PLS 7935 was set in a standard monument well at the intersection of Bonita & Johnson Streets.
A mag nail & washer stamped PLS 7935 was set in asphalt at the intersection of Johnson Street & Glen Drive.

SURVEYOR'S STATEMENT

This Corner Record was prepared by me or under my direction in conformance with the Land Surveyor's Act on FEB 3, 2011

Signed [Signature] P.L.S. or R.C.E. No. 7935



COUNTY SURVEYOR'S STATEMENT

This Corner Record was received FEBRUARY 7, 2011

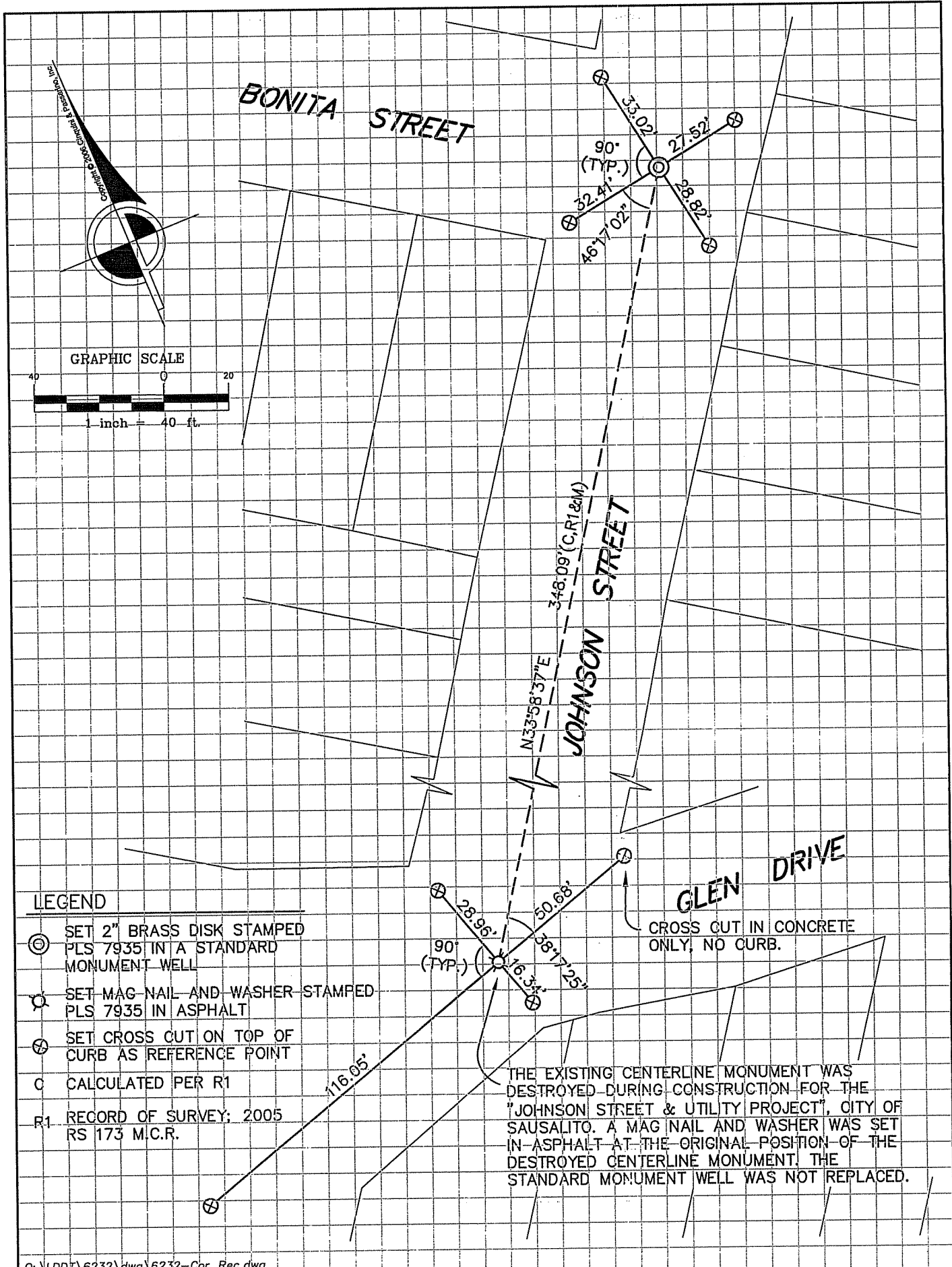
and examined and filed MARCH 9, 2011

Signed [Signature] P.L.S. or R.C.E. No. 7128

Title COUNTY SURVEYOR



County Surveyor's Comments _____



LEGEND

- ⊙ SET 2" BRASS DISK STAMPED PLS 7935 IN A STANDARD MONUMENT WELL
- ⊙ SET MAG NAIL AND WASHER STAMPED PLS 7935 IN ASPHALT
- ⊙ SET CROSS CUT ON TOP OF CURB AS REFERENCE POINT
- C CALCULATED PER R1
- R1 RECORD OF SURVEY; 2005 RS 173 M.C.R.

CROSS CUT IN CONCRETE ONLY, NO CURB.

THE EXISTING CENTERLINE MONUMENT WAS DESTROYED DURING CONSTRUCTION FOR THE "JOHNSON STREET & UTILITY PROJECT", CITY OF SAUSALITO. A MAG NAIL AND WASHER WAS SET IN ASPHALT AT THE ORIGINAL POSITION OF THE DESTROYED CENTERLINE MONUMENT. THE STANDARD MONUMENT WELL WAS NOT REPLACED.