

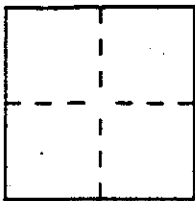
CORNER RECORD

Document Number AP# 065-056-21

City of SAUSALITO

County of MARIN, California

Brief Legal Description LOTS 4&5, BLOCK 10, ^{BACK}BOOK 1 OF ^{PULL}MAPS, PAGE 9.



CORNER TYPE

- Government Corner
- Meander
- Rancho
- Date of Survey _____
- Control
- Property
- Other

COORDINATES (Optional)

N. _____
 E. _____
 Zone _____ Datum _____
 Elev. _____

Corner — Left as found Found and tagged Established Reestablished Rebuilt

Identification and type of corner found: Evidence used to identify or procedure used to establish or reestablish the corner:

A description of the physical condition of the monument as found and as set or reset: SET MONUMENTS WITH TAGS, R.C.E. 18221, AS ILLUSTRATED FOR THE PROPERTY CORNERS OF LOTS 4&5, BLOCK 10 AS PREVIOUSLY ESTABLISHED IN ^{BACK}BOOK 1 OF ^{PULL}MAPS, PAGE 9, MARIN COUNTY RECORDS.

SURVEYOR'S STATEMENT

This Corner Record was prepared by me or under my direction in conformance with the Land Surveyors' Act on NOVEMBER 2 1993.

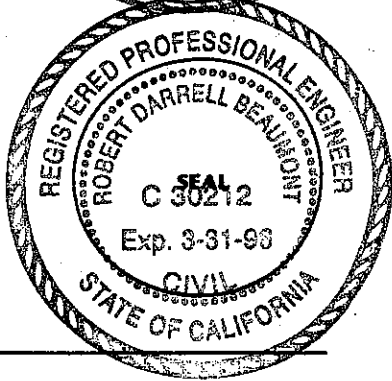
Signed [Signature] L.S. or R.C.E. Number 18221

COUNTY SURVEYOR'S STATEMENT

This Corner Record was received 11-23 1993 and examined and filed 11-23 1993.

Signed [Signature] Title DCS

County Surveyor's Comment _____



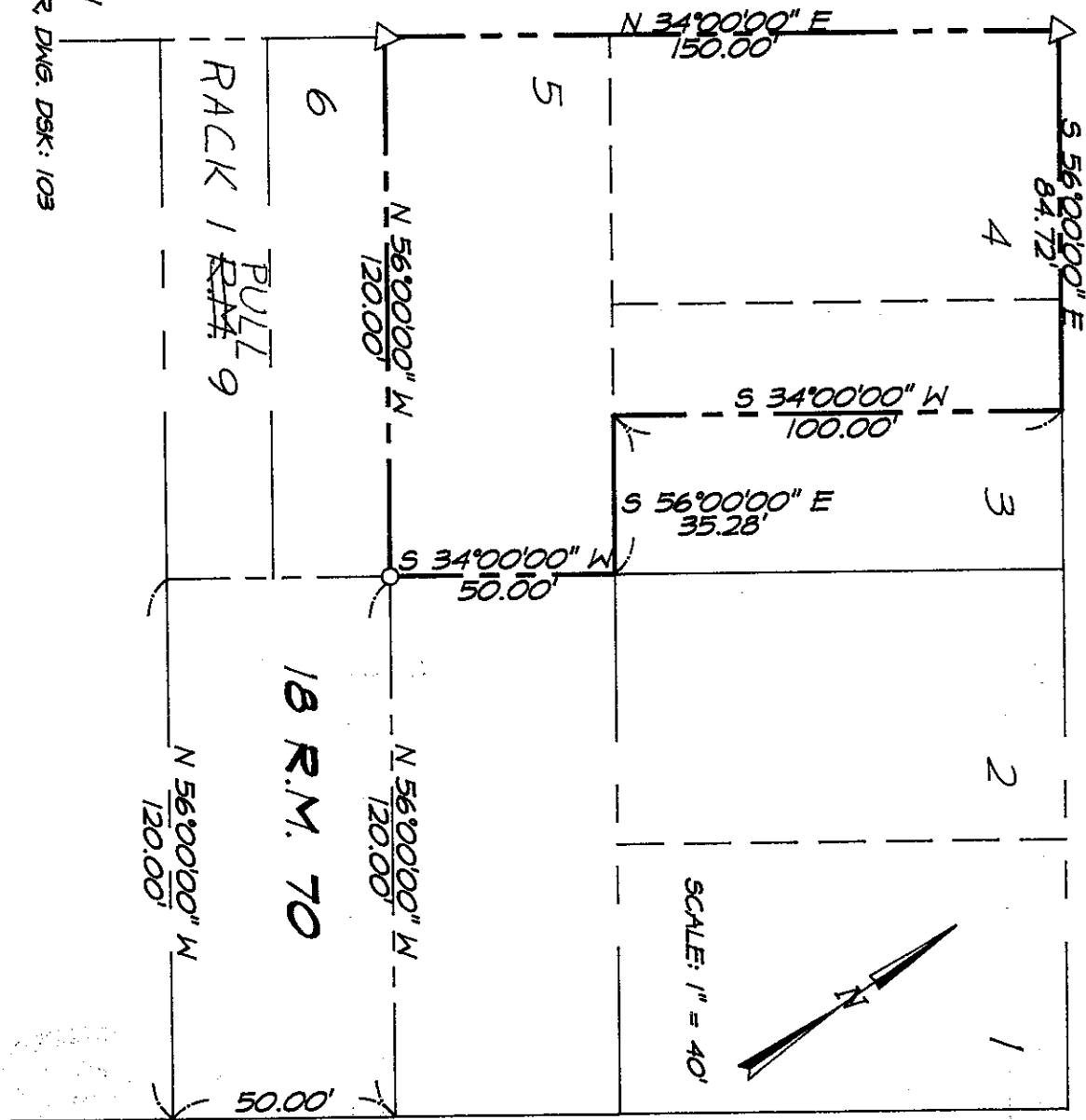
A.P.N. 065-056-21
 DATA DSK: 2
 DWG. FILE: 6337CR DWG. DSK: 103
 JIN. 6337

PINE STREET

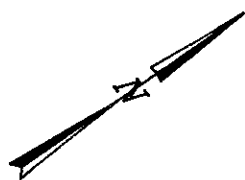
80'

CALEDONIA STREET

LEGEND



SCALE: 1" = 40'



(BASIS OF BEARINGS: 18 R.M. 70)
 N 34°00'00" E

(728.24' PER 8 O.S. 83) 728.27

JOHNSON STREET

M-169

M-39

- STANDARD STREET MONUMENTS
- ▲ SET LEAD & TAG RCE 18221
- SET 3/4" IRON PIPE RCE 18221