

# CORNER RECORD

Document Number APN 65-055-04

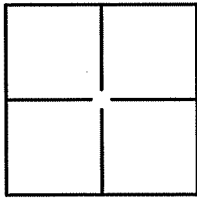
City of SAUSALITO

County of MARIN, California

Brief Legal Description EAST CORNER JOHNSON STREET AND CALEDONIA STREET, BLOCK 8 OF "LANDS OF SAUSALITO LAND AND FERRY COMPANY", RACK 1 PULL 9, MARIN COUNTY RECORDERS OFFICE.

### CORNER TYPE

### COORDINATES (Optional)



Government Corner  Control   
Meander  Property   
Rancho  Other

N \_\_\_\_\_  
E \_\_\_\_\_  
Zone \_\_\_\_\_ NAD27  NAD83   
NAD83 Epoch \_\_\_\_\_  
Elev. \_\_\_\_\_  
Vert. Datum: NVGD29  NVGD88   
Meas. Units: Metric  Imperial

Date of Survey APRIL 8, 2009

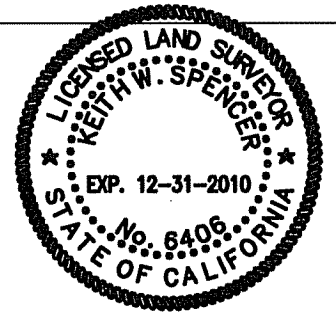
Corner— Left as found  Found and tagged  Established  Reestablished  Rebuilt

Identification and type of corner found: Evidence used to identify or procedure used to establish or reestablish the corner:  
FOUND NAILS AND BRASS TAGS "LS 5797" IN PAVEMENT IN CONSTRUCTION AREA.

A description of the physical condition of the monument as found and as set or reset: \_\_\_\_\_  
SET ADDITIONAL TIES AS SHOWN ON PAGE 2

### SURVEYOR'S STATEMENT

This Corner Record was prepared by me or under my direction in conformance with the Land Surveyors' Act on JUNE 11, 2009,

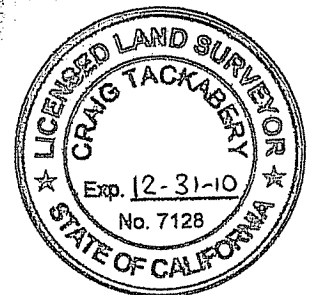


Signed [Signature] P.L.S. or R.C.E. Number 6406

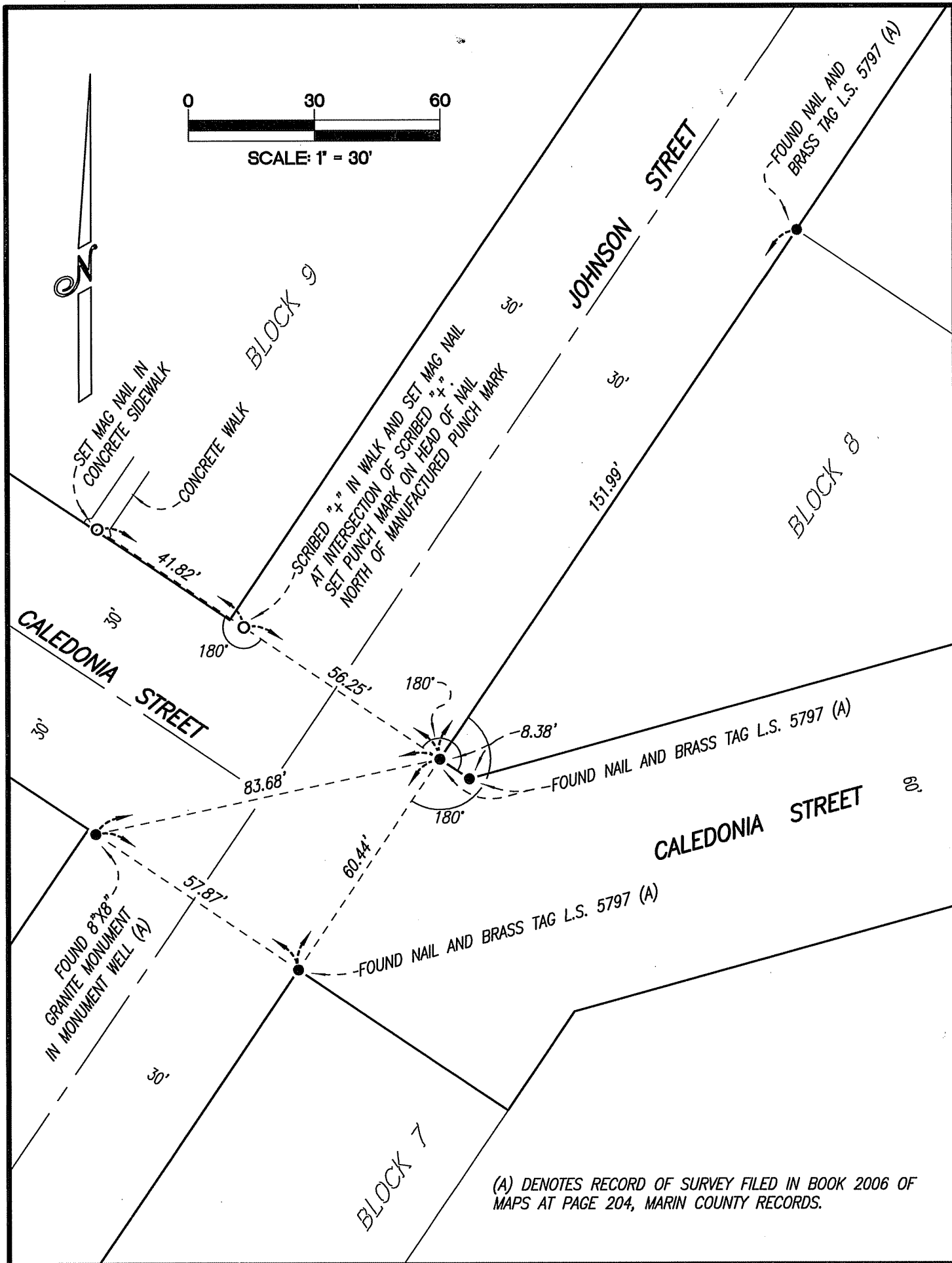
### COUNTY SURVEYOR'S STATEMENT

This Corner Record was received JUNE 26, 2009 and examined and filed AUGUST 12, 2009

Signed [Signature] P.L.S. or R.C.E. No: 7128  
Title \_\_\_\_\_



County Surveyor's Comment \_\_\_\_\_  
\_\_\_\_\_  
\_\_\_\_\_



(A) DENOTES RECORD OF SURVEY FILED IN BOOK 2006 OF MAPS AT PAGE 204, MARIN COUNTY RECORDS.