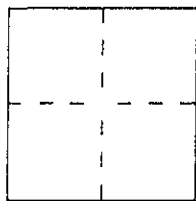


# CORNER RECORD

Document Number 65-041-04

City of Sausalito County of Marin, California

Brief Legal Description Westerly Line of Bay St. per "Map No. 1 of Salt Marsh and Tide Lands"



### CORNER TYPE

Government Corner  Control   
 Meander  Property   
 Rancho  Other   
 Date of Survey 6/26/01

### COORDINATES (Optional)

N. \_\_\_\_\_  
 E. \_\_\_\_\_  
 Zone \_\_\_\_\_ Datum \_\_\_\_\_  
 Elev. \_\_\_\_\_

Corner — Left as found  Found and tagged  Established  Reestablished  Rebuilt

Identification and type of corner found: Evidence used to identify or procedure used to establish or reestablish the corner:  
Found nail and tags LS 4794 as shown on the Record of Survey Map filed in Volume 30 of Official Surveys at Page 13, Marin County Records.

A description of the physical condition of the monument as found and as set or reset:  
We set 2" brass tags, embossed L.S. 5290 at the corners of Block 1 "Map No. 1 of Salt Marsh and Tide Lands" (see map on reverse side)

### SURVEYOR'S STATEMENT

This Corner Record was prepared by me or under my direction in conformance with the Land Surveyors' Act on June 26<sup>th</sup> 2001

Signed David Harp L.S. or R.C.E. Number LS5290



### COUNTY SURVEYOR'S STATEMENT

This Corner Record was received June 28, 2001 and examined and filed June 29, 2000

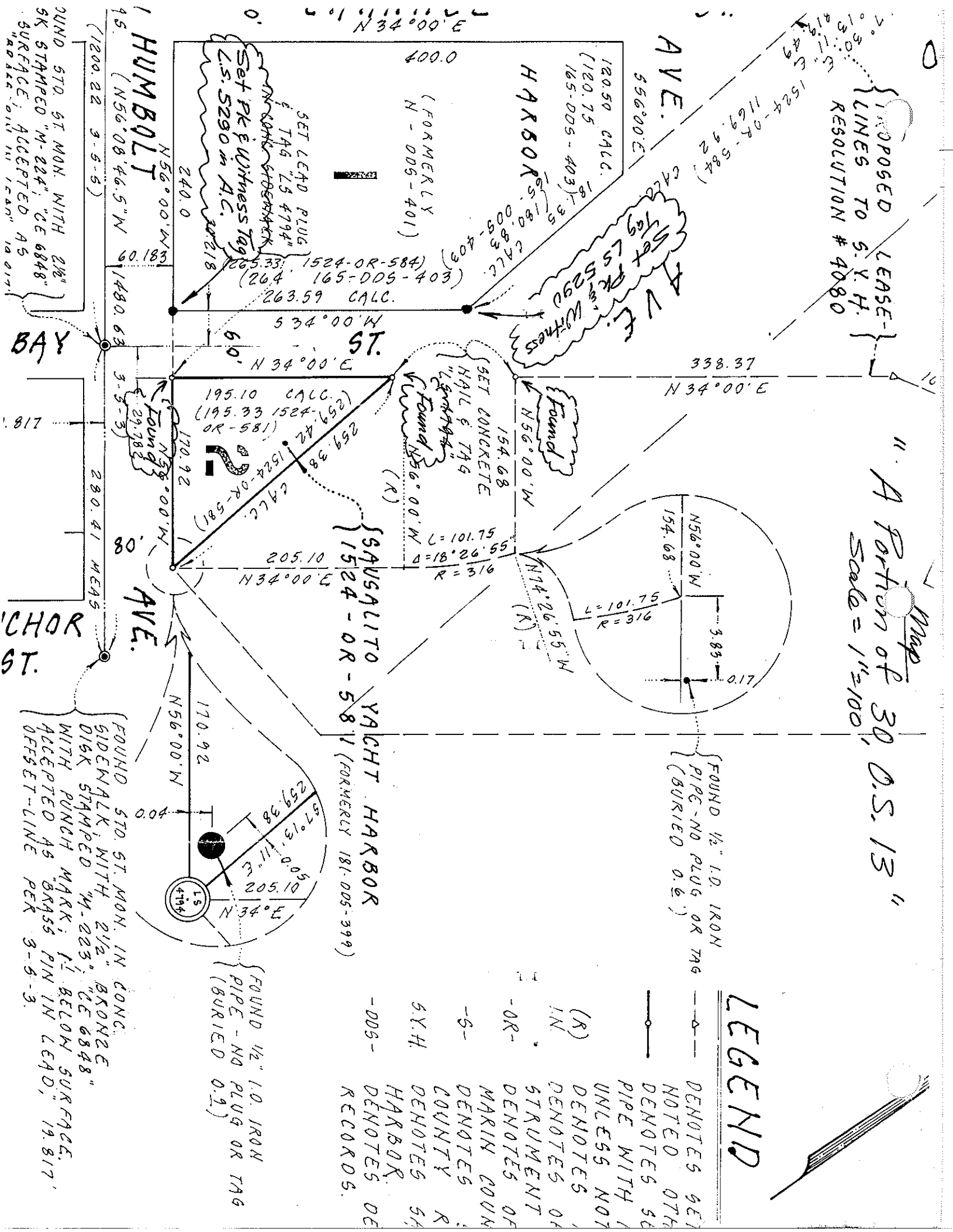
Signed \_\_\_\_\_ Title DEPUTY



County Surveyor's Comment \_\_\_\_\_  
 \_\_\_\_\_  
 \_\_\_\_\_

PROPOSED LEASE-  
LINES TO S. Y. H.  
RESOLUTION # 4080

Map  
A portion of 30, D.S. 13  
Scale = 1"=100'



### LEGEND

- DENOTES SET NOTED OTHER
- DENOTES SET PIPE WITH UNLESS NOT DENOTES OF STRUMENT
- DENOTES OF DENOTES OF MARIN COUN
- DENOTES COUNTY R
- DENOTES SA HARBOR.
- DENOTES OF RECORDS.

{ FOUND 1/2" I.O. IRON PIPE - NO PLUG OR TAG (BURIED 0.2)

{ FOUND 1/2" I.O. IRON PIPE - NO PLUG OR TAG (BURIED 0.6)

{ FOUND STD. ST. MON. IN CONC. SIDEWALK WITH 2 1/2" BRONZE DISK STAMPED "M-223", "CE 6848" WITH PUNCH MARK; 1" BELOW SURFACE. ACCEPTED AS BRASS PIN IN LEAD, 19.817' OFFSET-LINE PER 3-5-3.

{ SAUSALITO YACHT HARBOR (FORMERLY 181.005-399)

FOUND STD. ST. MON. WITH 2 1/2" BRONZE DISK STAMPED "M-224", "CE 6848" SURFACE; ACCEPTED AS BRASS PIN IN LEAD, 19.817' OFFSET-LINE PER 3-5-3.

BAY ST.

ANCHOR ST.

HUMBOLDT AVE.

HARBOR AVE.

FOUND STD. ST. MON. WITH 2 1/2" BRONZE DISK STAMPED "M-224", "CE 6848" SURFACE; ACCEPTED AS BRASS PIN IN LEAD, 19.817' OFFSET-LINE PER 3-5-3.

817

4794

205.10

170.92

154.68

120.75

165.005-403

120.50 CALC.

120.75

165.005-403

120.50 CALC.

120.75

165.005-403

120.50 CALC.

120.75

165.005-403

120.50 CALC.

120.75

165.005-403

120.50 CALC.

120.75

165.005-403

120.50 CALC.

120.75

165.005-403