

CORNER RECORD

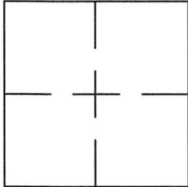
Agency Index 20-013

Document Number APN 064-335-14

City of SAUSALITO, CA

County of MARIN, California

Brief Legal Description PORTION OF LOT 39 AS SHOWN IN VOLUME 13 AT PAGE 62 SHEET 4 OF 6 OF MAPS.



CORNER TYPE

Government Corner Control
 Meander Property
 Rancho Other

Date of Survey 02-04-2019

COORDINATES (Optional)

N. _____ E. _____

Elevation _____

Units Metric U.S. Survey Foot

Horizontal Datum _____

Zone _____ Epoch Date _____

Vertical Datum _____

Complies with Public Resources Code 8801-8819

Complies with Public Resources Code 8890-8902

PLS Act Ref: 8765(d) 8771 8773 Other: _____

Corner/Monument: Left as found Established Rebuilt Pre-Construction
 Found and tagged Reestablished Referenced Post-Construction

Narrative of corner identified and monument as found, set, reset, replaced, or removed:

See sheet #2 for description(s):

FOUND 2.5" BRASS DISC WITH PUNCH IN GOOD CONDITION STAMPED LS 3075 IN THE CENTER OF ARANA

CIRCLE AND LINCOLN DRIVE AS SHOWN ON MAP OF MARINA VISTA SUBDIVISION FILED IN VOLUME 13 OF

MAPS AT PAGE 62. SET 1/2" IRON PIPE IN SOUTHERLY CORNER OF LOT 39 AND 40 AND A 1 1/2" BRASS

DISC AND MAG NAIL IN THE TOP FACE OF CURB AT THE EXTENSION OF THE COMMON LINE TO SAID LOTS 39

AND 40 BOTH MONUMENTS TAGGED LS 9565 REEDER. SEE PAGE TWO FOR DETAILS.

SURVEYOR'S STATEMENT

This Corner Record was prepared by me or under my direction in conformance with

the Professional Land Surveyors' Act on 9-21, 2020.

Signed [Signature] P.L.S. No. 9565



COUNTY SURVEYOR'S STATEMENT

This Corner Record was received FEBRUARY 11, 2020

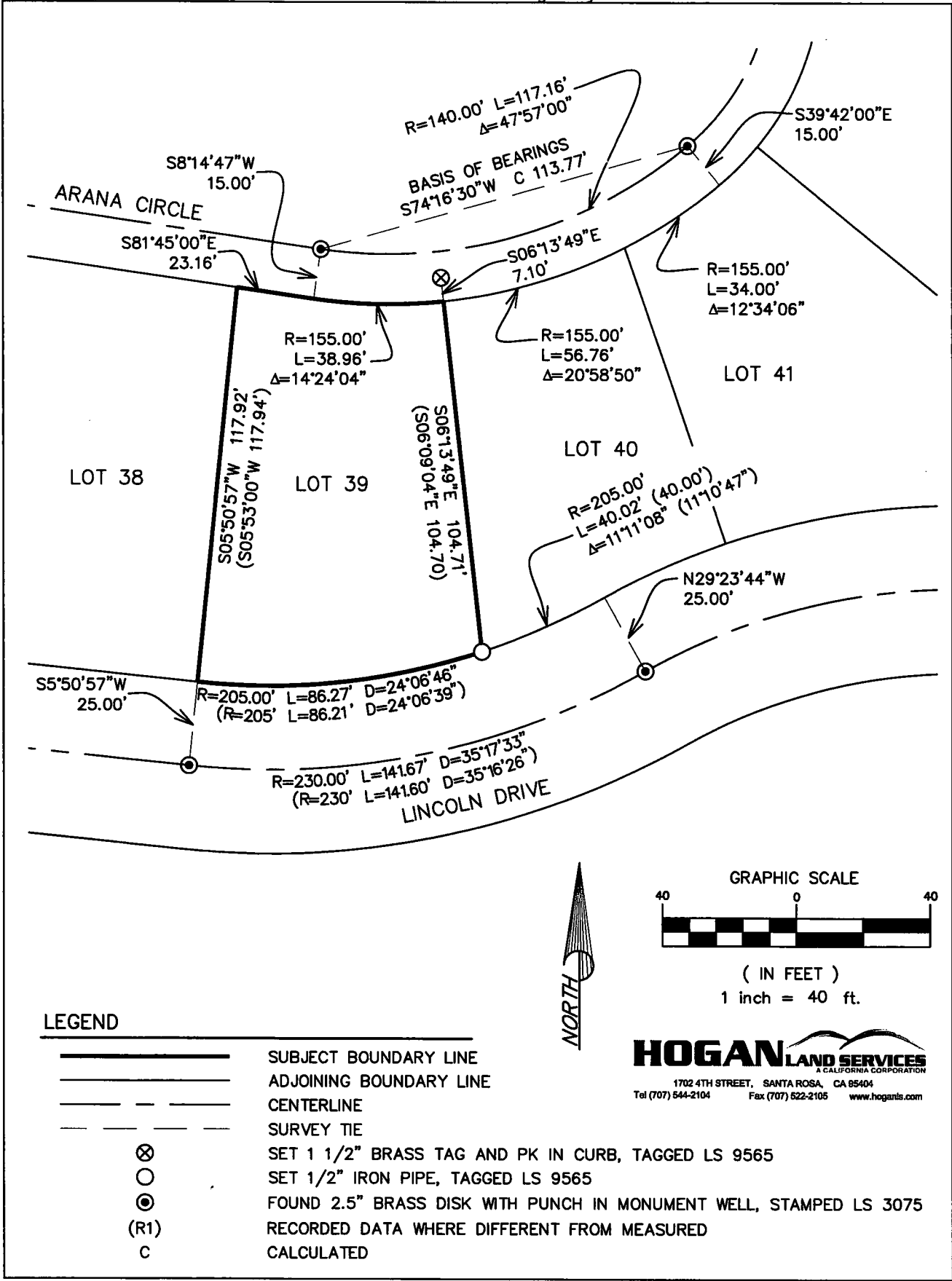
and examined and filed 10/14, 2020

Signed [Signature] P.L.S. or R.C.E. No. 9292

Title DEPUTY C.S.

County Surveyor's Comment _____





LEGEND

- | | |
|------|--|
| | SUBJECT BOUNDARY LINE |
| | ADJOINING BOUNDARY LINE |
| | CENTERLINE |
| | SURVEY TIE |
| | SET 1 1/2" BRASS TAG AND PK IN CURB, TAGGED LS 9565 |
| | SET 1/2" IRON PIPE, TAGGED LS 9565 |
| | FOUND 2.5" BRASS DISK WITH PUNCH IN MONUMENT WELL, STAMPED LS 3075 |
| (R1) | RECORDED DATA WHERE DIFFERENT FROM MEASURED |
| C | CALCULATED |

HOGAN LAND SERVICES
A CALIFORNIA CORPORATION
 1702 4TH STREET, SANTA ROSA, CA 95404
 Tel (707) 544-2104 Fax (707) 522-2105 www.hoganls.com