

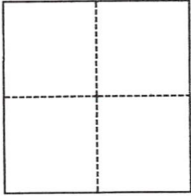
# CORNER RECORD

Agency Index DPW #19-130  
Document Number 064-334-31

City of Sausalito County of Marin, California  
Brief Legal Description Lot 63, Map of Marina Vista Subdivision, 13 Maps 62

### CORNER TYPE

### COORDINATES (Optional)



- Government Corner
- Meander
- Rancho
- Control
- Property
- Other

Date of Survey October 16, 2019

N. \_\_\_\_\_ E. \_\_\_\_\_  
 Elevation \_\_\_\_\_  
 Units  Metric  U.S. Survey Foot  
 Horizontal Datum \_\_\_\_\_  
 Zone \_\_\_\_\_ Epoch Date \_\_\_\_\_  
 Vertical Datum \_\_\_\_\_  
 Complies with Public Resources Code §§8801-8819  
 Complies with Public Resources Code §§8890-8902

PLS Act Ref.:  8765(d)  8771  8773  Other:  
 Corner/Monument:  Left as found  Established  Rebuilt  Pre-Construction  
 Found and tagged  Reestablished  Referenced  Post-Construction

Narrative of corner identified and monument as found, set, reset, replaced, or removed:

See sheet #2 for description(s):

Reestablish a portion of the Northerly lot line of Lot 63, 13 Maps 62 which is common with the Southerly line of Lot 64 of same said map. Found existing street monuments on Marin Avenue per said 13 Maps 62 to reestablish the line. See page 2 of 2 for details of the monuments used per this survey and for points set.

### SURVEYOR'S STATEMENT

This Corner Record was prepared by me or under my direction in conformance with  
 the Professional Land Surveyors' Act on October 24, 2109  
 Signed *Douglas J. Scranton* P.L.S. or R.C.E. No. PLS 5379



### COUNTY SURVEYOR'S STATEMENT

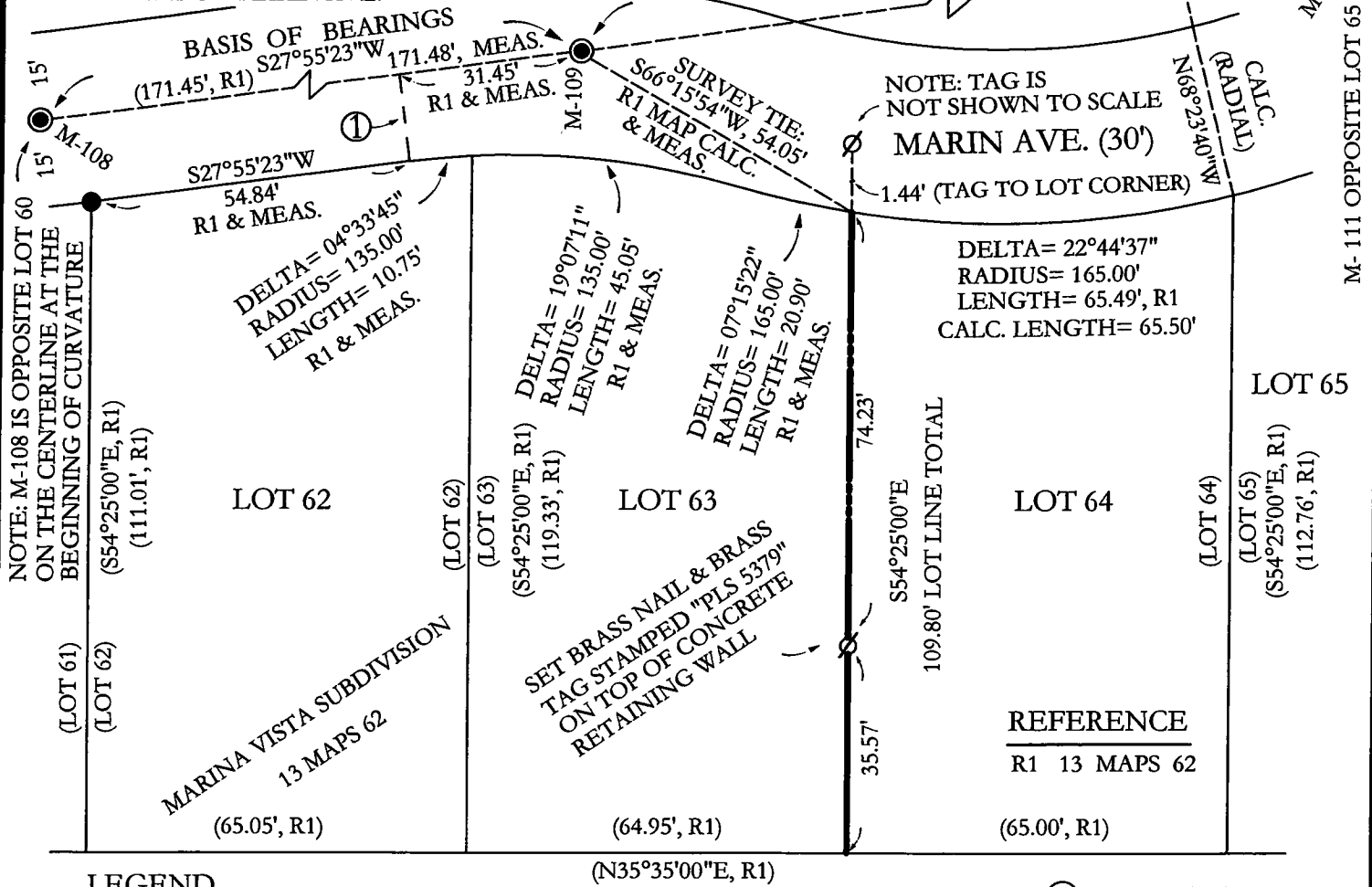
This Corner Record was received October 29, 2019  
 and examined and filed MAR. 05, 2020  
 Signed *[Signature]* P.L.S. or R.C.E. No. 9292  
 Title DEPUTY C.S.



County Surveyor's Comment

NOTE: M-109 SHOWN IS SITUATED AT THE TANGENT INTERSECTION OF THE CENTERLINE CURVE WITH A RADIUS OF 150' THAT IS OPPOSITE LOT 62 & 63. A PORTION OF THE LINE FROM M-108 TO M-109 IS ALSO THE CENTERLINE OF MARIN AVE.

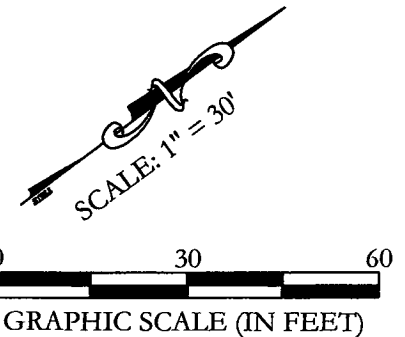
SURVEY TIE:  
N27°34'42"E, 173.91, R1 MAP CALC. & MEAS.



**LEGEND**

- ⊘ SET BRASS NAIL WITH BRASS TAG STAMPED LS 5379 ON TOP OF STREET CURB ON THE PROJECTION OF THE LOT LINE (UNLESS NOTED OTHERWISE)
- FOUND STANDARD STREET MONUMENT BRASS DISC STAMPED CITY OF SAUSALITO LS 3075 WITH LETTER DESIGNATION AS NOTED ABOVE & SITUATED INSIDE MONUMENT CASING
- LS TAG 4694 & CONCRETE NAIL SET IN SIDEWALK PER MARIN COUNTY CORNER RECORD APN 064-334-34

COURSE ① SHOWN ABOVE  
SURVEY TIE:  
S62°04'37"E (RADIAL),  
15.00', R1 MAP CALC. & MEAS.



**BASIS OF BEARINGS**

TAKEN AS SOUTH 27°55'23" WEST BETWEEN MONUMENTS AS SHOWN HEREON AND AS SAID MONUMENTS ARE SHOWN UPON R1

ALL DIMENSIONS GIVEN IN FEET AND DECIMALS THERE OF

NO EASEMENTS ARE SHOWN

CALC. CALCULATED (FROM R1)