

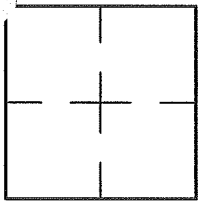
CORNER RECORD

Document Number A.P.# 064-301-04

City of SAUSALITO

County of MARIN, California

Brief Legal Description LOT 55, 10 R.M. 65



CORNER TYPE

COORDINATES (Optional)

Government Corner Control

Meander Property

Rancho Other

Date of Survey 4/5/16

N. _____
 E. _____
 Zone NAD27 NAD83
 NAD83 Epoch _____
 Elev. _____
 Vert. Datum: NGVD29 NAVD88
 Meas. Units: Metric Imperial

Corner- Left as found Found and tagged Established Reestablished Rebuilt

Identification and type of corner found: Evidence used to identify or procedure used to establish or reestablish the corner:
REESTABLISHED THE CORNERS OF LOT 55, BASED ON STREET MONUMENTS ON BUCHANAN STREET PER 10 R.M. 65
AS SHOWN ON SHEET 2

A description of the physical condition of the monument as found and as set or reset: SEE SHEET 2.

SURVEYOR'S STATEMENT

This Corner Record was prepared by me or under my direction in conformance with

the Land Surveyor's Act on APRIL 5, 2016

Signed Lawrence P. Doyle P.L.S. or R.C.E. No. P.L.S. 4694



COUNTY SURVEYOR'S STATEMENT

This Corner Record was received JUNE 13, 2016

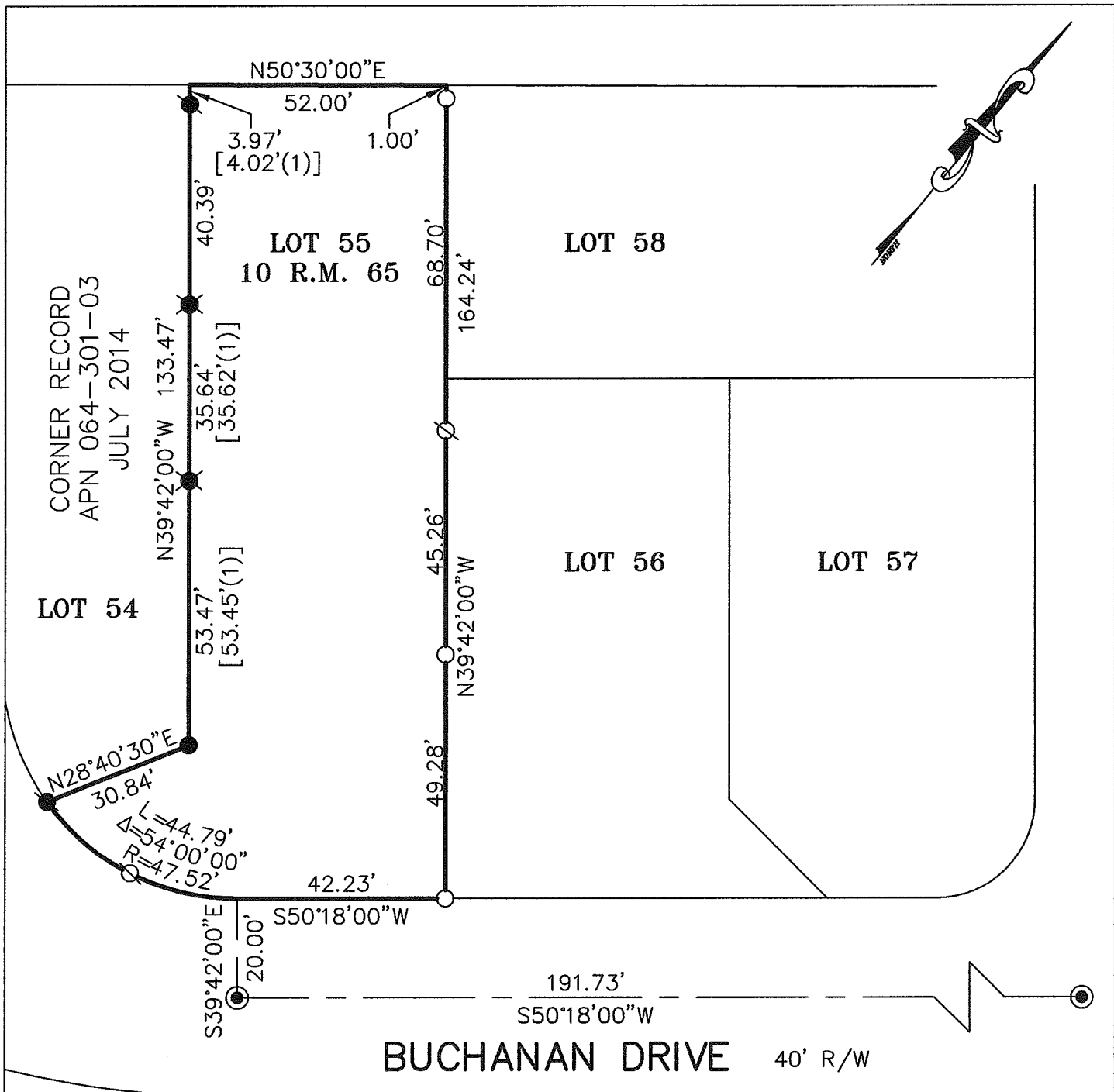
and examined and filed OCTOBER 17, 2016

Signed Richard G. Simonitch P.L.S. or R.C.E. No. 7821

Title County Surveyor



County Surveyor's Comment _____

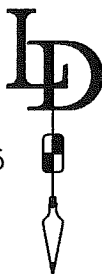


REFERENCE

(1) CORNER RECORD 064-301-03
DATED 7/3/14

LEGEND

- ⊙ FOUND STREET MONUMENT
- FOUND PIN
- FOUND PIPE & PLUG, RCE 30465
- ⊗ FOUND REBAR & CAP, RCE 30465
- SET PIPE & PLUG, L.S. 4694
- ⊗ SET NAIL & TAG, L.S. 4694



BASIS OF BEARING

THE BASIS OF BEARING IS S50°18'00"W
BETWEEN TWO FOUND STREET MONUMENTS
ON BUCHANAN DRIVE AS SHOWN ON
10 R.M. 65.

CORNER RECORD	
LOT 55, 10 R.M. 65/A.P.N. 064-301-04	
SAUSALITO MARIN COUNTY CALIFORNIA	
SCALE: 1" = 30'	DRAWN BY:
DATE: 6/24/16	LAWRENCE P. DOYLE
LAND SURVEYOR/CIVIL ENGINEER	
100 HELENS LANE MILL VALLEY CA 94941 (415-388-9585)	
DRAWING NO. 2649-16	