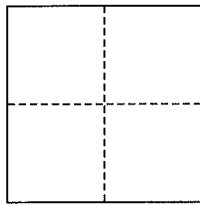


**CORNER RECORD**

City of Sausalito

Document Number AP# 064-301-03  
County of Marin, California

Brief Legal Description Lot 54, 10 RM 65



**CORNER TYPE**

Government Corner  Control   
Meander  Property   
Rancho  Other   
Date of Survey May 6, 2014

**COORDINATES (Optional)**

N. \_\_\_\_\_  
E. \_\_\_\_\_  
Zone \_\_\_\_\_ NAD27  NAD83   
NAD83 Epoch \_\_\_\_\_  
Elev. \_\_\_\_\_  
Vert. Datum: NGVD29  NAVD88   
Meas. Units: Metric  Imperial

**Corner-** Left as found  Found and tagged  Established  Reestablished  Rebuilt

Identification and type of corner found: Evidence used to identify or procedure used to establish or reestablish the corner:  
Found original Standard Street Mons, per 10 RM 65.

A description of the physical condition of the monument as found and as set or reset: All Property Corners and Property Line points were set as shown hereon, per 10 RM 65

**SURVEYOR'S STATEMENT**

This corner Record was prepared by me or under my direction in conformance with  
the Land Surveyor's Act on May 6, 2014

Signed [Signature] P.L.S. or R.C.E. No. 30465

**COUNTY SURVEYOR'S STATEMENT**

This Corner Record was received JUNE 16, 2014  
and examined and filed JULY 3, 2014

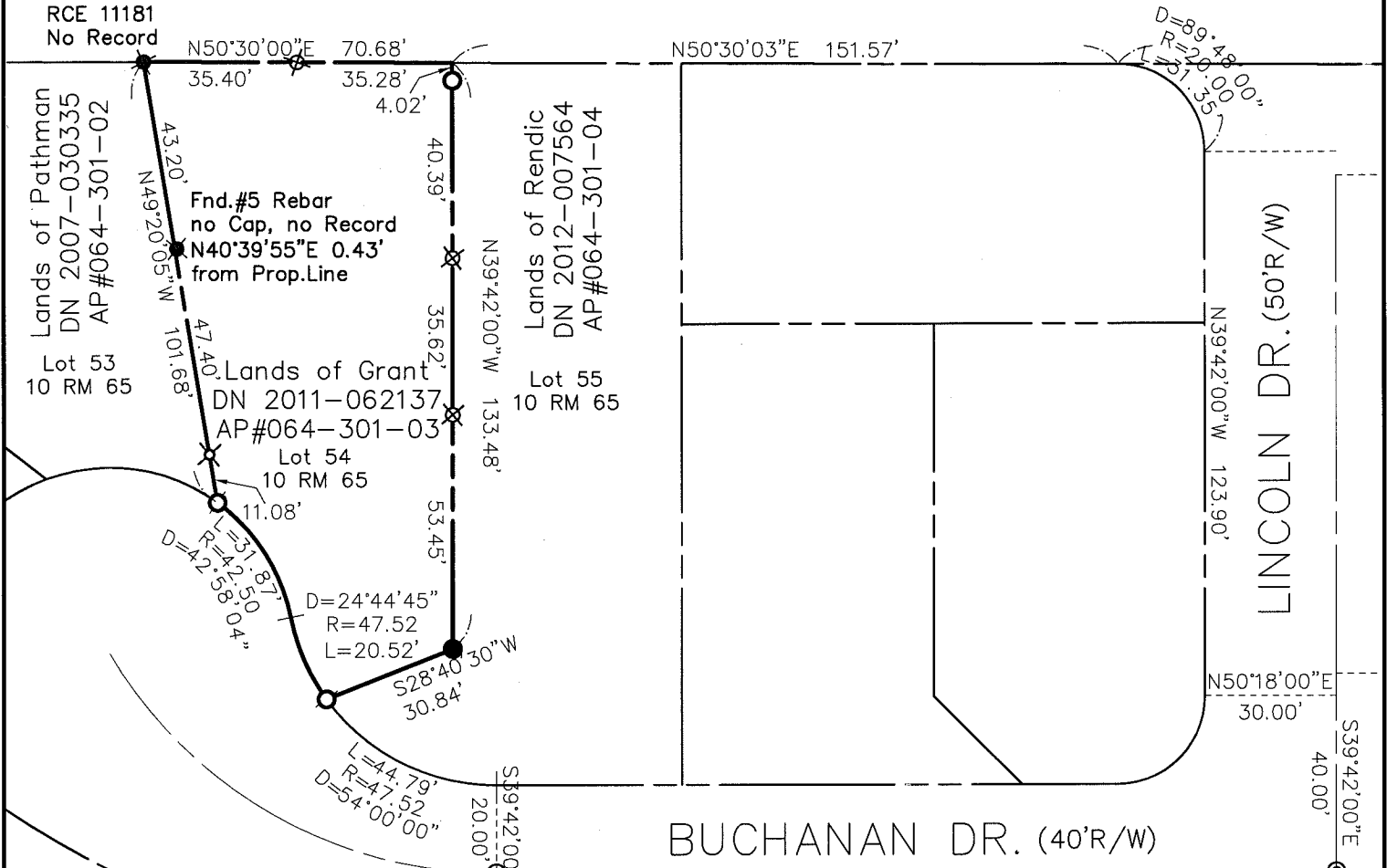
Signed [Signature] P.L.S. or R.C.E. No. 7821

Title DEPUTY



**County Surveyor's Comment** \_\_\_\_\_

BUTTE ST. (60'R/W)



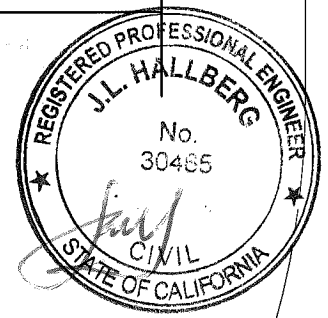
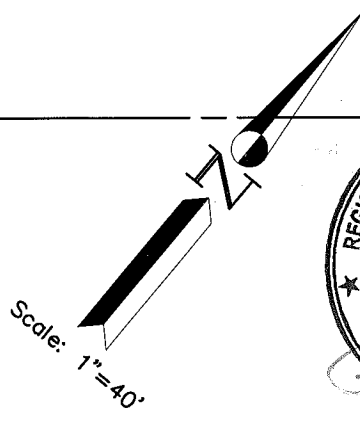
BUCHANAN DR. (40'R/W)

BASIS of BEARINGS N50°18'00"E 191.73'

LEGEND

- FOUND STRT. MONUMENT, AS NOTED
- FOUND 1" IRON PIN (NO RECORD)
- ✱ FOUND REBAR & CAP, AS NOTED
- SET IP & PLUG, RCE 30465
- ✱ SET REBAR & CAP, RCE 30465
- ✱ SET NAIL ON TOP CONC. BLOCK WALL

Note: All distances are in feet and decimals thereof.



SHEET	1	OF	1
SCALE:	1" = 40'	DESIGN:	EDL
DATE:	May 2014	DRAWN:	EDL
FILE:	2014-044	CHECKED:	J.L.H

J.L. ENGINEERING  
 CIVIL ENGINEERS-LAND SURVEYORS  
 1539 4th ST., SAN RAFAEL, CA. 94901 (415) 457-6647

Corner Record  
 Lands of Grant - 196 Buchanan Dr.  
 APN 064-301-03, Sausalito, Marin County, CA