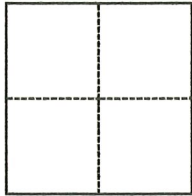


CORNER RECORD

Agency Index DPW#21-136
 Document Number APN 064-274-01

City of Sausalito County of Marin, California
 Brief Legal Description Record of Survey, Book 2006 Maps, Page 213, MCR

CORNER TYPE



- Government Corner Control
 Meander Property
 Rancho Other

Date of Survey November 16, 2021

COORDINATES (Optional)

N. _____ E. _____
 Elevation _____
 Units Metric U.S. Survey Foot
 Horizontal Datum _____
 Zone _____ Epoch Date _____
 Vertical Datum _____
 Complies with Public Resources Code §§8801-8819
 Complies with Public Resources Code §§8890-8902

PLS Act Ref.: 8765(d) 8771 8773 Other:
 Corner/Monument: Left as found Established Rebuilt Pre-Construction
 Found and tagged Reestablished Referenced Post-Construction

Narrative of corner identified and monument as found, set, reset, replaced, or removed:

See sheet #2 for description(s):

Found 2 GGNRA monuments, AP73 & AP74; 1 iron pipe no tag; 2 rebar & yellow cap, illegible; and 1 bridge spike with brass tag. Set new monuments along northerly boundary line and along roadway easement line.

SURVEYOR'S STATEMENT

This Corner Record was prepared by me or under my direction in conformance with the Professional Land Surveyors' Act on November 23, 2021

Signed [Signature] P.L.S. or R.C.E. No. 7950



COUNTY SURVEYOR'S STATEMENT

This Corner Record was received November 24, 2021
June 27, 2022

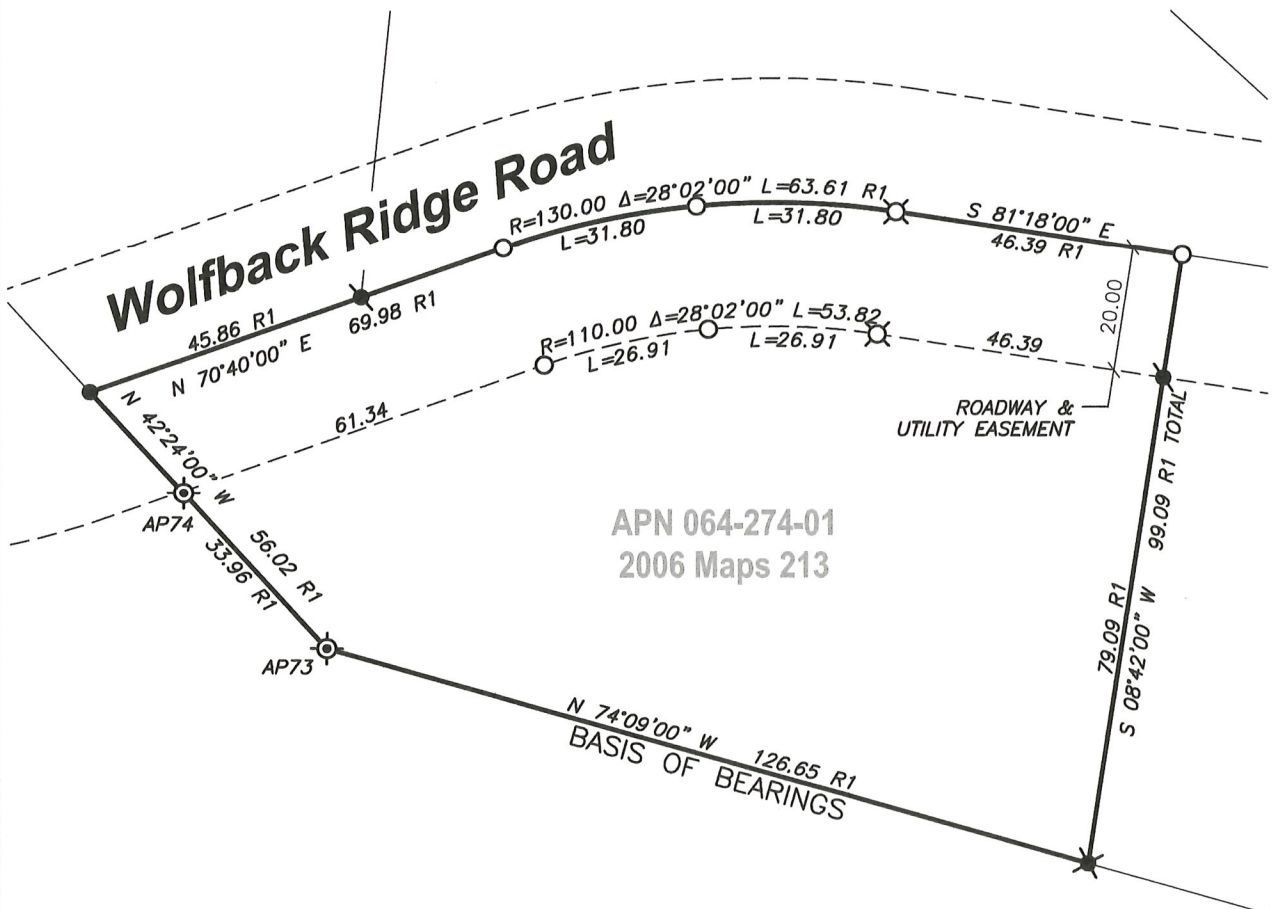
and examined and filed July 7, 2022

Signed T. W. Park P.L.S. or R.C.E. No. 8176

Title County Surveyor

County Surveyor's Comment

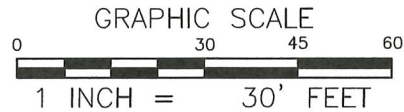
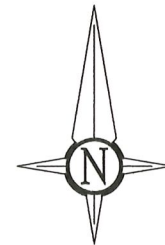




APN 064-274-01
2006 Maps 213

LEGEND

- SET 5/8-INCH REBAR, YELLOW CAP, PLS 7950
- ⊗ SET BRASS NAIL & TAG, PLS 7950 IN CONCRETE DRIVEWAY
- FOUND BRIDGE SPIKE & BRASS TAG, LS 5065
- ⊙ FOUND 1/2-INCH REBAR, YELLOW CAP, PLS 5065
- ⊗ FOUND 3/4-INCH IRON PIPE, NO TAG
- ⊗ FOUND 3-INCH BRASS DISK, "US DEPT OF THE INTERIOR BU OF LAND MANAGEMENT" AP# GGNRA 1976
- R1 RECORD OF SURVEY, FILED IN BOOK 2006 OF MAPS, AT PAGE 213, MARIN COUNTY RECORDS



1031Survey, Inc.

HighDefinitionSurveying
1857 Rainier Circle, Petaluma, California, 94954
415-827-6370

J:\21344-Prlatko\Dwg\21344CR.dwg