

CORNER RECORD

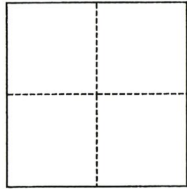
Agency Index DPW#19-012

Document Number APN 064-232-21 B

City of Sausalito County of Marin, California

Brief Legal Description City of Sausalito Monument M-216 Book 6 Maps Page 70 MCR

CORNER TYPE



- Government Corner Control
 Meander Property
 Rancho Other

Date of Survey June 28, 2014

COORDINATES (Optional)

N. _____ E. _____

Elevation _____

Units Metric U.S. Survey Foot

Horizontal Datum _____

Zone _____ Epoch Date _____

Vertical Datum _____

Complies with Public Resources Code §§8801-8819

Complies with Public Resources Code §§8890-8902

PLS Act Ref.: 8765(d) 8771 8773 Other:

Corner/Monument: Left as found Established Rebuilt Pre-Construction

Found and tagged Reestablished Referenced Post-Construction

Narrative of corner identified and monument as found, set, reset, replaced, or removed:

See sheet #2 for description(s):

This corner record is being refilled to show PK/Washer ties to monument M-216 before destruction of Monument and used as ties to replace Post-Construction.

SURVEYOR'S STATEMENT

This Corner Record was prepared by me or under my direction in conformance with

the Professional Land Surveyors' Act on February 20, 2019

Signed Linda A. Carruthers P.L.S. or R.C.E. No. 7053



COUNTY SURVEYOR'S STATEMENT

This Corner Record was received FEBRUARY 28, 2019

and examined and filed MAY 14, 2019

Signed J. Lee P.L.S. or R.C.E. No. 9292

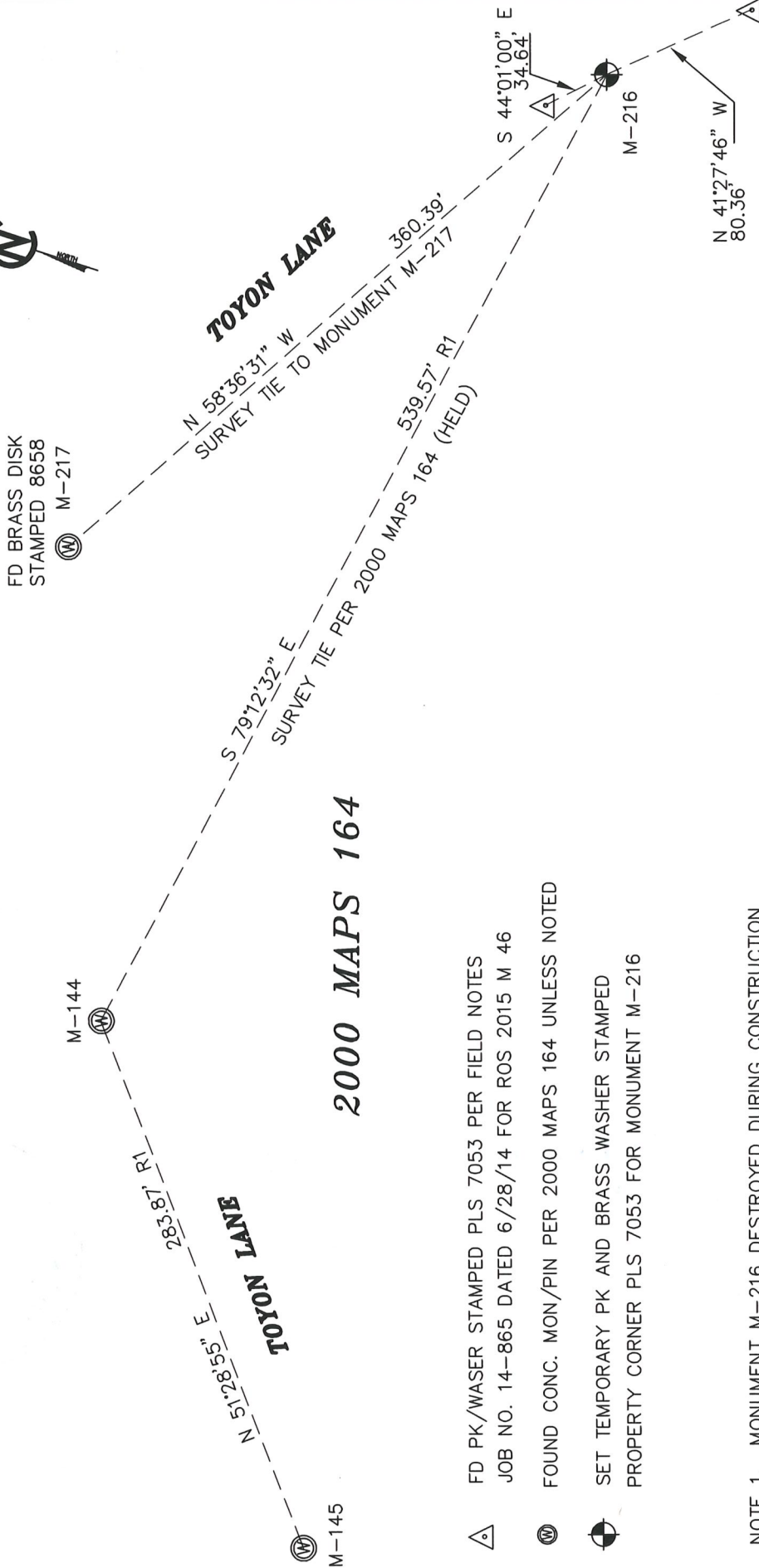
Title DEPUTY C.S.

County Surveyor's Comment



CORNER RECORD

R1 RECORD OF SURVEY 2000 MAPS 164



2000 MAPS 164

- FD PK/WASER STAMPED PLS 7053 PER FIELD NOTES
JOB NO. 14-865 DATED 6/28/14 FOR ROS 2015 M 46
- FOUND CONC. MON/PIN PER 2000 MAPS 164 UNLESS NOTED
- SET TEMPORARY PK AND BRASS WASHER STAMPED
PROPERTY CORNER PLS 7053 FOR MONUMENT M-216

NOTE 1. MONUMENT M-216 DESTROYED DURING CONSTRUCTION TEMPORARY REPLACEMENT WITH A PK AND BRASS WASHER BASED UPON THAT CERTAIN RECORD OF SURVEY RECORDED IN BOOK 2000 OF MAPS PAGE 164, MARIN COUNTY RECORDS

NOTE 2. CONTROL POINTS DESIGNATED AS PK/WASHER WERE SET FOR THE BOUNDARY DETERMINATION OF LANDS OF CARRASCO RECORDED 2015 M 46 AND DIRECTLY TIED TO M-216 BEFORE DESTRUCTION.

NOTE 3. THIS CORNER RECORD IS BEING REFILLED TO SHOW PK/WASHER TIES PER NOTE 2

CITY OF SAUSALITO
MONUMENT REPLACEMENT M-216
VICINITY OF APN 064-232-21

LINDA A. CARRUTHERS & ASSOCIATES
2015 BRIDGEWAY, STE. 301D
SAUSALITO, CA 94965

SCALE 1"=80'

DATE FEB. 2019

JOB NO. 14-887CR

SHEET 2 OF 2