

CORNER RECORD

Sausalito, CA
County of Marin, California

Vicinity of APN 064-232-21

Brief Legal Description: City of Sausalito Monument M-216, vicinity of Lot 13 "Map of Toyon Terraces"
recorded in Book 6 of Maps page 70, Marin County Records.

CORNER TYPE

COORDINATES

(Optional)

Government Corner
Meander
Rancho
Date of Survey : August 2014

Control
Property
Other

N. _____
E. _____
Zone _____ Datum _____
Elev. _____

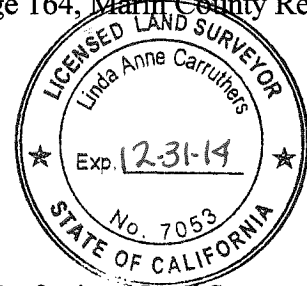
Corner --Left as found Found and tagged Established Reestablished Rebuilt

Identification and type of corner found: Evidence used to identify or procedure used to establish or reestablish the corner.

This survey is reestablishment of Sausalito Monument M-216 as shown on that certain Record of Survey
entitled: "Lands of Vincent & Stacey Conrad" Recorded in Book 2000 Maps Page 164, Marin County Records.

A Description of the physical condition of the monument as found and as set or reset.

See Sheet two.



SURVEYOR'S STATEMENT

This Corner Record was prepared by me or under my direction in conformance with the Professional Land Surveyor's
Act on September 6, 2014

Signed Linda A. Carruthers P.L.S. 7053

COUNTY SURVEYOR'S STATEMENT

This Corner Record was received 09/09, 2014 and examined
and filed 9-24-2014, 2014.

Signed Richard G. Simonitch Title DEPUTY

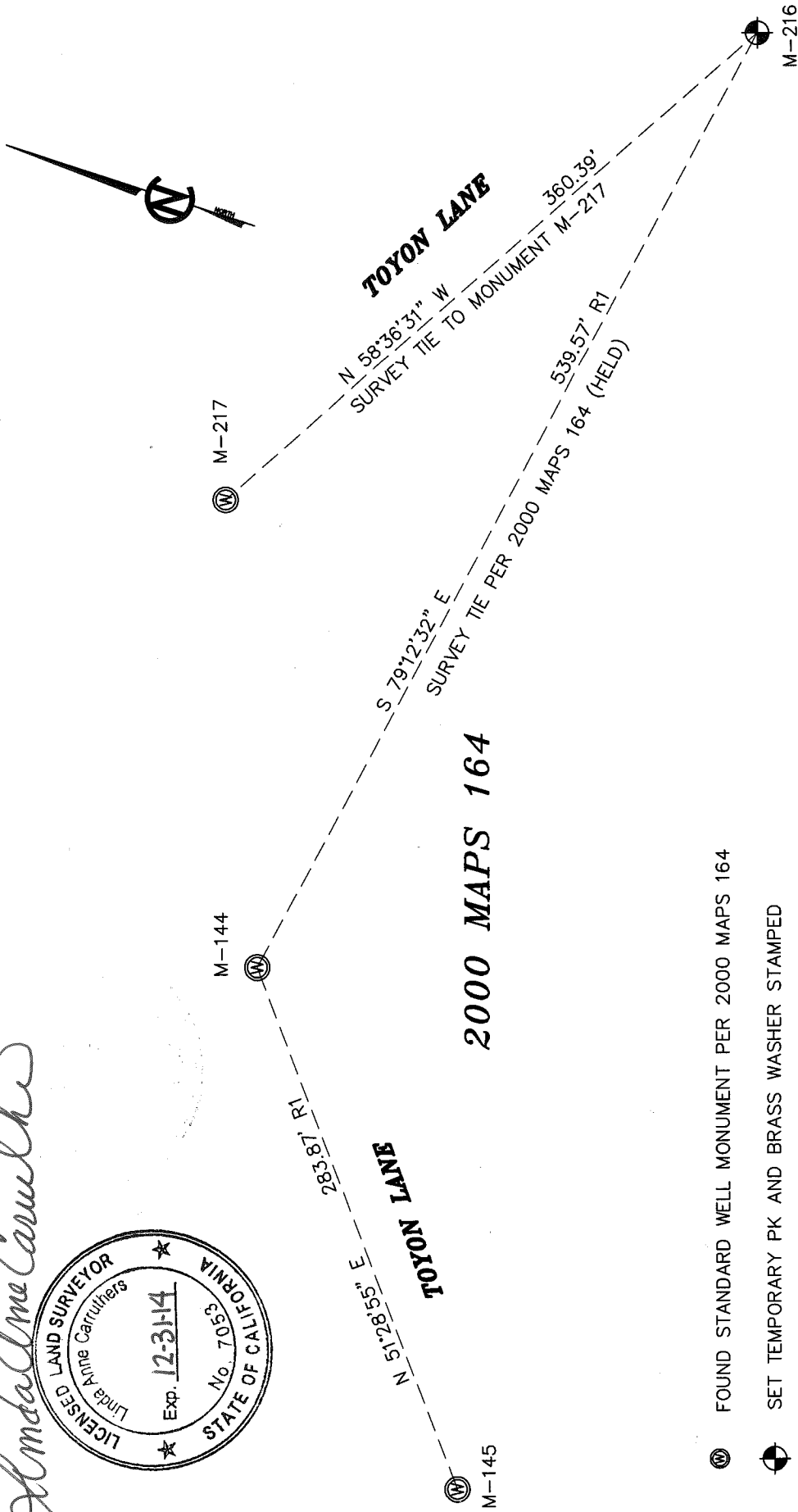
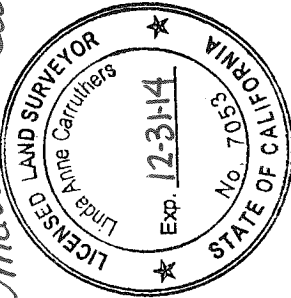


County Surveyor's Comments _____

R1 RECORD OF SURVEY 2000 MAPS 164

CORNER RECORD

Linda Anne Carruthers



2000 MAPS 164

- ⊙ FOUND STANDARD WELL MONUMENT PER 2000 MAPS 164
- ⊙ SET TEMPORARY PK AND BRASS WASHER STAMPED PROPERTY CORNER PLS 7053 FOR MONUMENT M-216

NOTE: MONUMENT M-216 DESTROYED DURING CONSTRUCTION TEMPORARY REPLACEMENT WITH A PK AND BRASS WASHER BASED UPON THAT CERTAIN RECORD OF SURVEY RECORDED IN BOOK 2000 OF MAPS PAGE 164, MARIN COUNTY RECORDS

CITY OF SAUSALITO
MONUMENT REPLACEMENT M-216
VICINITY OF APN 064-232-21
LINDA A. CARRUTHERS & ASSOCIATES
2015 BRIDGEWAY, STE. 301D
SAUSALITO, CA 94965
SCALE 1"=80'
DATE AUG. 2014
JOB NO. 14-887CR
SHEET 2 OF 2