

# CORNER RECORD

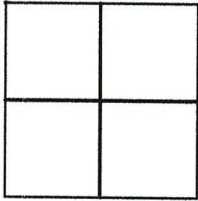
Agency Index CR23-033

Document Number 064-231-10

City of Sausalito

County of MARIN, California

Brief Legal Description Lot 25A per 2 MAPS 173, filed 05/14/1954



### CORNER TYPE

Government Corner  Control   
Meander  Property   
Rancho  Other

Date of Survey 04/17/2023

### COORDINATES (Optional)

N. \_\_\_\_\_ E. \_\_\_\_\_  
Elevation \_\_\_\_\_  
Units Metric  U.S. Survey Foot   
Horizontal Datum \_\_\_\_\_  
Zone \_\_\_\_\_ Epoch Date \_\_\_\_\_  
Vertical Datum \_\_\_\_\_

Complies with Public Resources Code §§8801-8819

Complies with Public Resources Code §§8890-8902

PLS Act Ref:  8765(d)  8771  8773  Other:

Corner/Monument:  Left as found  Established  Rebuilt  Pre-Construction  
 Found and tagged  Reestablished  Referenced  Post-Construction

Narrative of corner identified and monument as found, set, reset, replaced, or removed:

See sheet #2 for description (s):

### SURVEYOR'S STATEMENT

This Corner Record was prepared by me or under my direction in conformance with the Professional Land Surveyors' Act on April 25, 2023

Signed [Signature] P.L.S. or R.C.E. No. 6649



### COUNTY SURVEYOR'S STATEMENT

This Corner Record was received April 26, 2023

and examined and filed May 02, 2023

Signed T.W.P. P.L.S. [Redacted] No. 8176

Title County Surveyor



County Surveyor's Comment \_\_\_\_\_

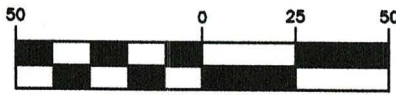
\_\_\_\_\_  
\_\_\_\_\_

All distances shown are in feet and decimals thereof

REFERENCES

- ( ) 1 2 RS 173, filed 05/14/1954
- ( ) 2 12 PM 21, filed 02/05/1976
- ( ) 3 1998 RS 163, filed 12/04/1998
- ( ) 4 2000 RS 164, filed 09/27/2000
- ( ) 5 CR 064-232-21B, filed 5/14/2019
- ( ) 6 Unfiled survey by W.G. Voorhies titled "Resubdivision of Lots 25-27-29 of Toyon Terraces", Job #4049, dated 06/15/1953.

GRAPHIC SCALE



( IN FEET )

LANDS OF  
SCHEINER/BARNETT  
I.N. 2005-0096008

(N58°37'00"W)2  
(N58°37'W)1  
N58°52'58"W  
(46.365')1 46.46'

(S59°31'24"E 380.81')3c  
Tie: S59°30'55"E 380.70'

SEE DETAIL B

LOT 24B( )1

SAME POINT

Below Surface

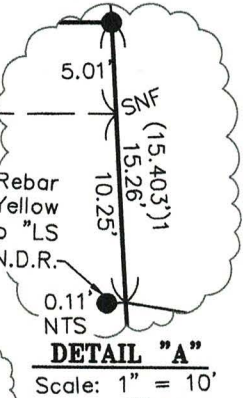
LOT 27A( )1

LOT 25A( )1

SEE DETAIL A

Found 1/2" Rebar  
with Yellow  
Plastic Cap "LS  
6344", N.D.R.

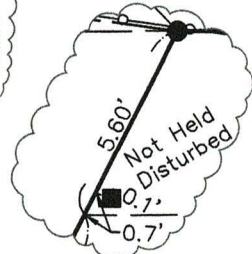
DETAIL "A"  
Scale: 1" = 10'



0.11' NTS  
0.22'

DETAIL NTS  
0.15'

(N31°23'E)1  
S31°23'23"W  
20.00' (20')1  
HELD



DETAIL "B"  
Scale: 1" = 10'

TOYON LN.  
(40' R/W)1

LEGEND

- Found Redwood Hub( )6 Remnants, replaced with rebar & cap as described below, U.N.O.
- Found 1/2" Rebar & Yellow Plastic Cap "LS 6344"( )3, at ground surface, U.N.O.
- ⊙ Found 2" Brass Disk with Punch in monument well( )2, tagged and depth as noted hereon.
- ✱ Found Mag Nail & 1 1/2" Brass Tag "PROPERTY CORNER PLS 7053"( )5
- Set 5/8" Rebar & Punched 1 1/2" Aluminum Cap, Stamped "LA STEVENS PLS 6649"
- Not to Scale (NTS)
- 1c Calculated Per Record Map
- SNF Searched Area Nothing Found
- NDR No Discovered Record
- UNO Unless Noted Otherwise
- Wire Fence

BASIS OF BEARINGS  
Tie: N79°12'32"W( )1,4

Found 1/8" Head Nail( )1,4 set in 4" Conc. Cylinder, 0.8' below surface in Monument Well, lid at surface (M-144)

Found Nail & 3/4" Tag Illegible( )1,4 set in 4" Conc. Cylinder, 0.5' below surface in Monument Well, lid at surface



**CORNER RECORD  
LANDS OF  
PFAU-STARR FAMILY REV. TR.**

(LOT 25A, 2 MAP 179)  
SAUSALITO

MARIN COUNTY  
SCALE: 1" = 50'

CALIFORNIA  
APRIL 25, 2023

**L.A. Stevens & Associates, Inc.**

Professional Land Surveyors \* (415) 382-7713  
7 Commercial Blvd., Suite 1 \* Novato, CA 94949

Job # 232297

Lawrence A. Stevens, PLS 6649

Copyright © Lawrence A. Stevens 2023