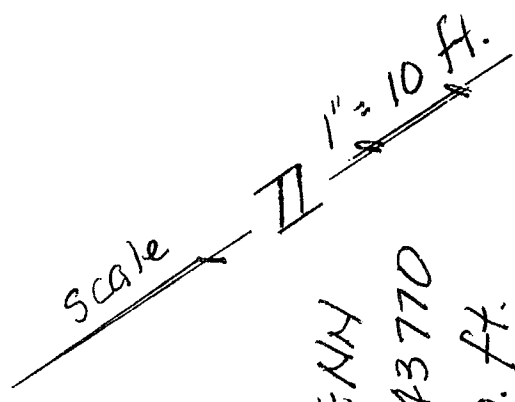
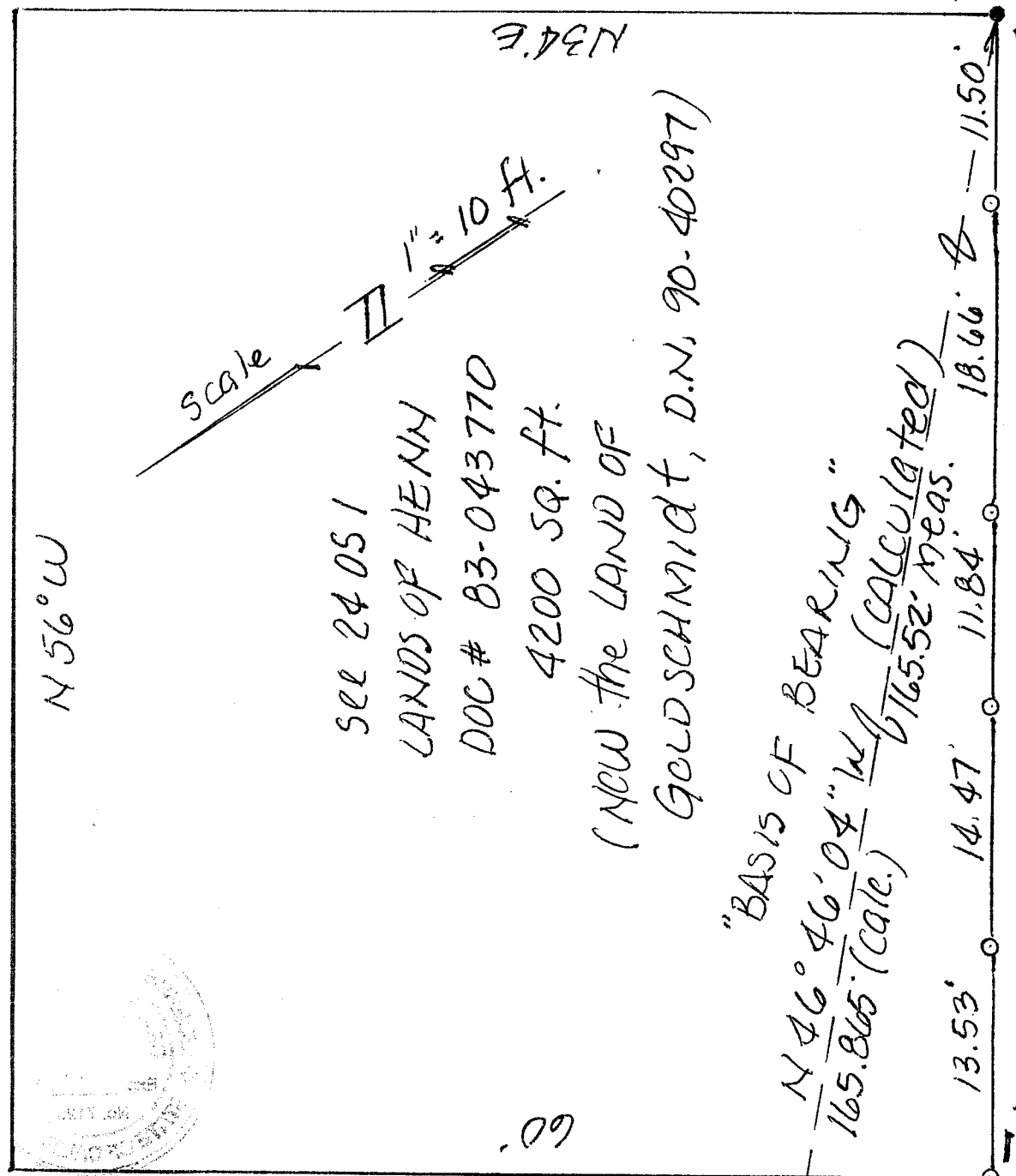


N 56° W



SEE 24 051  
 LANDS OF HENRY  
 DOC # 83-043770  
 4200 SQ. FT.  
 (NEW) THE LAND OF  
 GOLDSCHMIDT, D.N. 90-40297)

"BASIS OF BEARING"  
 $\frac{N 46^{\circ} 46' 04'' W}{165.865 (CALC.)}$   $\frac{165.52 (CALC.)}{165.52 (MEAS.)}$



Found nail & tag RCE 11181  
 per 24 051

(held)  
 found 3/4" IRON PIPE  
 RCE 11181  
 of 24 051

ALL DISTANCES IN FEET & DECIMALS THEREOF

EASEMENTS NOT DEPICTED