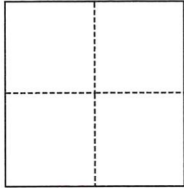


CORNER RECORD

Agency Index 20-035
 Document Number 20-1053 064-203-39

City of SAUSALITO County of MARIN, California
 Brief Legal Description POR LOT 1, 18 RM 46



CORNER TYPE

- Government Corner Control
 Meander Property
 Rancho Other

Date of Survey May 6, 2020

COORDINATES (Optional)

N. _____ E. _____
 Elevation _____
 Units Metric U.S. Survey Foot
 Horizontal Datum _____
 Zone _____ Epoch Date _____
 Vertical Datum _____
 Complies with Public Resources Code §§8801-8819
 Complies with Public Resources Code §§8890-8902

PLS Act Ref.: 8765(d) 8771 8773 Other:
 Corner/Monument: Left as found Established Rebuilt Pre-Construction
 Found and tagged Reestablished Referenced Post-Construction

Narrative of corner identified and monument as found, set, reset, replaced, or removed:
 See sheet #2 for description(s):



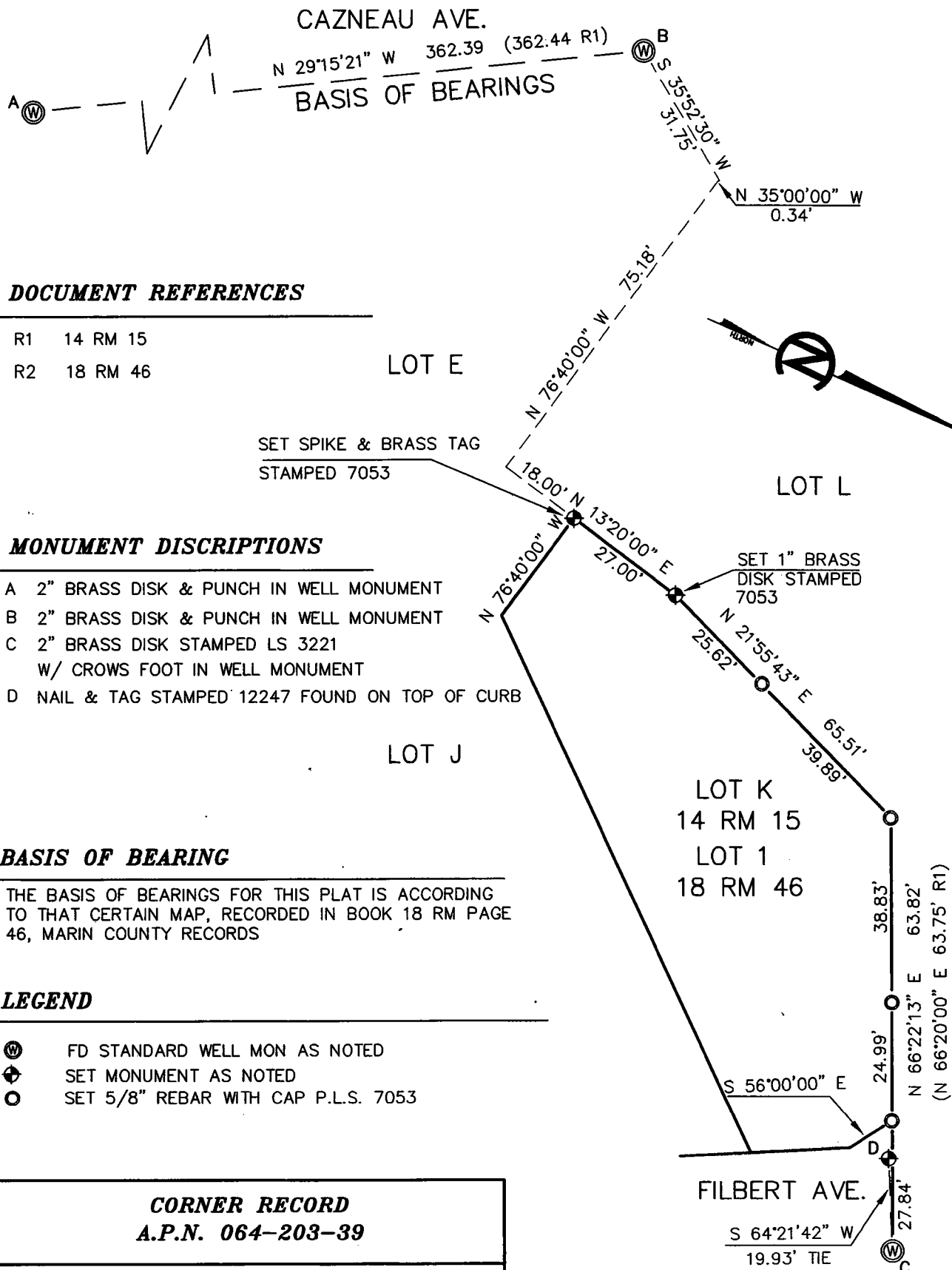
SURVEYOR'S STATEMENT

This Corner Record was prepared by me or under my direction in conformance with
 the Professional Land Surveyors' Act on 5-14-2020
 Signed [Signature] P.L.S. or R.C.E. No. 7053

COUNTY SURVEYOR'S STATEMENT

This Corner Record was received JUNE 11, 2020
 and examined and filed AUG. 11, 2020
 Signed [Signature] P.L.S. or R.C.E. No. 9292
 Title DEPUTY C.S.
 County Surveyor's Comment _____





DOCUMENT REFERENCES

- R1 14 RM 15
- R2 18 RM 46

MONUMENT DISCRIPTIONS

- A 2" BRASS DISK & PUNCH IN WELL MONUMENT
- B 2" BRASS DISK & PUNCH IN WELL MONUMENT
- C 2" BRASS DISK STAMPED LS 3221
W/ CROWS FOOT IN WELL MONUMENT
- D NAIL & TAG STAMPED 12247 FOUND ON TOP OF CURB

BASIS OF BEARING

THE BASIS OF BEARINGS FOR THIS PLAT IS ACCORDING TO THAT CERTAIN MAP, RECORDED IN BOOK 18 RM PAGE 46, MARIN COUNTY RECORDS

LEGEND

- ⊙ FD STANDARD WELL MON AS NOTED
- ⊕ SET MONUMENT AS NOTED
- SET 5/8" REBAR WITH CAP P.L.S. 7053

CORNER RECORD
A.P.N. 064-203-39

LINDA A. CARRUTHERS & ASSOCIATES
P.O. BOX 2053
SAUSALITO, CA 94965.

SCALE: 1"=30' DATE: MAY 2020
JOB NO. 20-1053 SHEET 2 OF 2