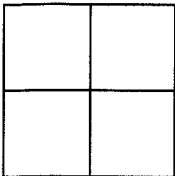


CORNER RECORD

Document Number APN: 064-203-19

City of SAUSALITO County of Marin State of California.

Brief Legal Description: LOT A - SAUSALITO DEL MAR, UNIT NO. 3 ; 14 RM 15



CORNER TYPE:

Government Corner Control
Meander Property
Rancho Other
Date of Survey _____

COORDINATES:

[Optional]

N> _____
E> _____
Zone _____ Datum _____
Elev> _____

CORNER: ----- Left as found Found & Tagged Established Reestablished Rebuilt

Identification & Type of Corner Found: Evidence used to identify or procedure used to establish or reestablish the corner:

FOUND MONUMENTS PER SUBDIVISION MAP - 14 RM 15

A description of the physical condition of the monument as found and as set or reset:

Original corners not found: Set points as shown on reverse.



SURVEYOR'S STATEMENT:

The corner record was prepared by me or under my direction in conformance with the Land Surveyors' Act on JAN 2005

Signed: Douglas J. Matteson RCE# 18200

COUNTY SURVEYORS STATEMENT:

This corner record was received: October 21, 2005

and filed December 6, 2005

Signed: [Signature] Title: County Surveyor



COUNTY SURVEYOR'S COMMENT _____

8/2005 12:22:40 PM, ATTESON CIVIL ENGINEER
C:\E_DRIVE\dwgs\176 Cazneau\surveyor\S04022.dwg, Cor Rec P2, g Matteson, HP LaserJet 1200 Series PCL 6, A-Size 8.5x11in., D

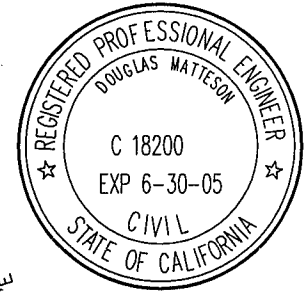
LEGEND

- FOUND 3/4" IRON PIPE, NAIL & TAG LS3887
- ⊙ FOUND STANDARD STREET MONUMENT
- SET 5/8" REBAR AND CAP RCE 18200 UNLESS NOTED OTHERWISE

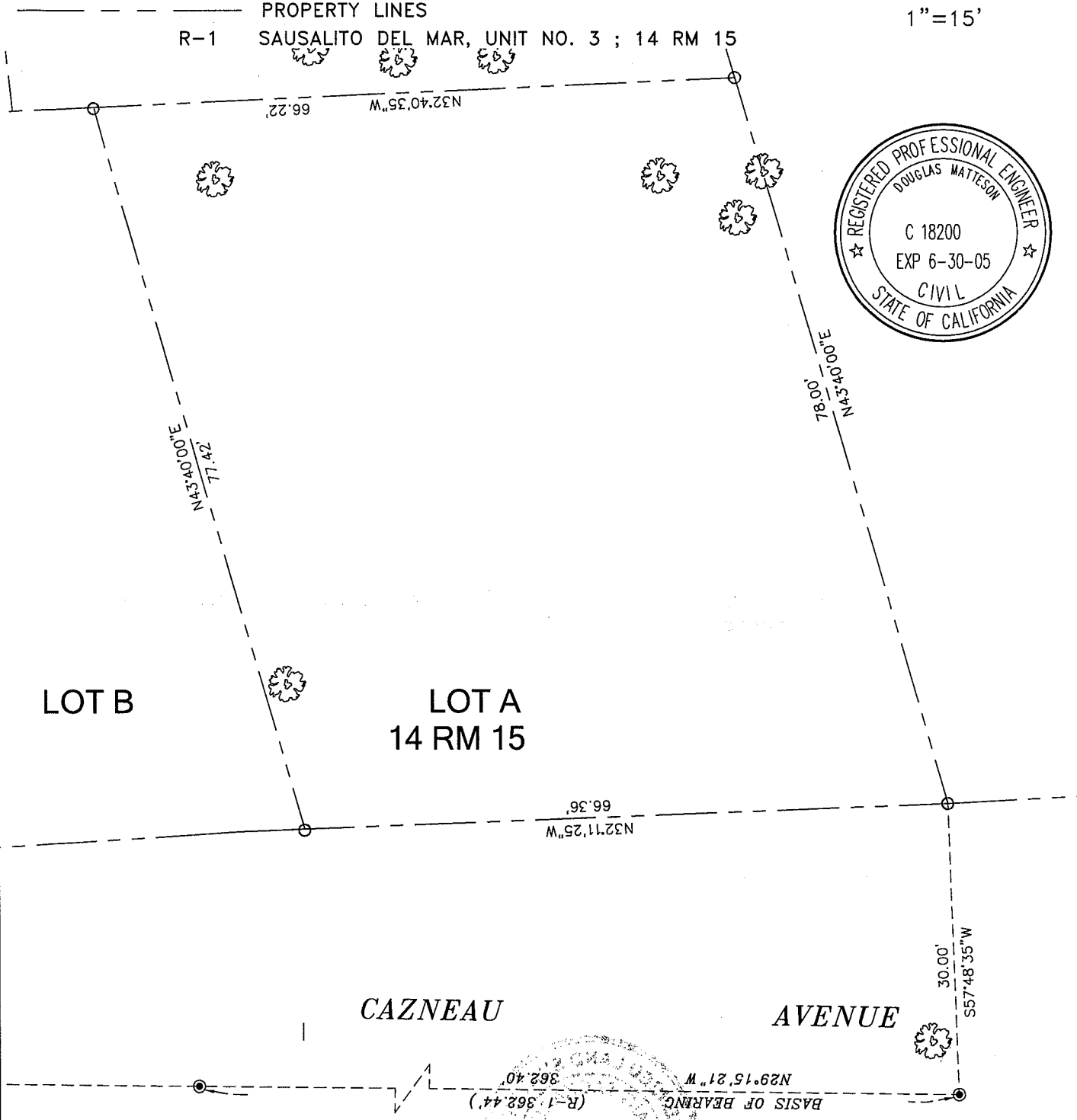
PROPERTY LINES
 R-1 SAUSALITO DEL MAR, UNIT NO. 3 ; 14 RM 15



1"=15'

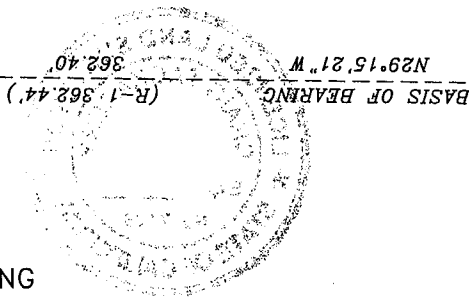


C:\E_DRIVE\dwgs\176 Cazneau\surveyor\S04022.dwg, Cor Rec P1, 11/28/2005 12:21:47 PM, Doug Matteson, HP LaserJet 1200 Series PCL 6, A-Size 8.5x11in., DJ MATTESON CIVIL ENGINEER



CAZNEAU

AVENUE



MATTESON ENGINEERING AND SURVEYING
 SUITE 210A 200 GATE FIVE SAUSALITO ,CA

APN: 064-203-19

1"=15'
 PAGE 1 OF 1