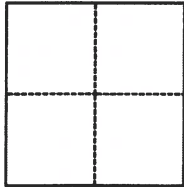


# CORNER RECORD

Agency Index CR22-138Document Number 064-192-31City of Sausalito County of Marin, CaliforniaBrief Legal Description PARCEL B, PARCEL MAP 22 AT PAGE 96**CORNER TYPE****COORDINATES (Optional)**

- ☐ Government Corner ☐ Control  
☐ Meander ☒ Property  
☐ Rancho ☐ Other

Date of Survey \_\_\_\_\_

N. \_\_\_\_\_ E. \_\_\_\_\_

Elevation \_\_\_\_\_

Units ☐ Metric ☐ U.S. Survey Foot

Horizontal Datum \_\_\_\_\_

Zone \_\_\_\_\_ Epoch Date \_\_\_\_\_

Vertical Datum \_\_\_\_\_

☐ Complies with Public Resources Code §§8801-8819☐ Complies with Public Resources Code §§8890-8902

PLS Act Ref.:

☒ 8765(d)☐ 8771☐ 8773☐ Other:Corner/  
Monument:☐ Left as found☐ Established☐ Rebuilt☐ Pre-Construction☐ Found and tagged☒ Reestablished☐ Referenced☐ Post-Construction

Narrative of corner identified and monument as found, set, reset, replaced, or removed:

☒ See sheet #2 for description(s):

Found Standard Street Monuments with 3" brass disc and punch per PM 22 at page 96, found 1/2" rebar and cap "L.S. 5767" per corner record; Doc. no. 64-192-23, found 1/2" iron pipe "LS7237" per corner record; Doc. No. 64-192-33 and used them to reestablish the locations of Parcel "B". Set 1/2" rebar with pink cap "PLS9471", as shown on sheet 2.

**SURVEYOR'S STATEMENT**

This Corner Record was prepared by me or under my direction in conformance with

the Professional Land Surveyors' Act on November 18, 2022

Signed

P.L.S. or R.C.E. No.

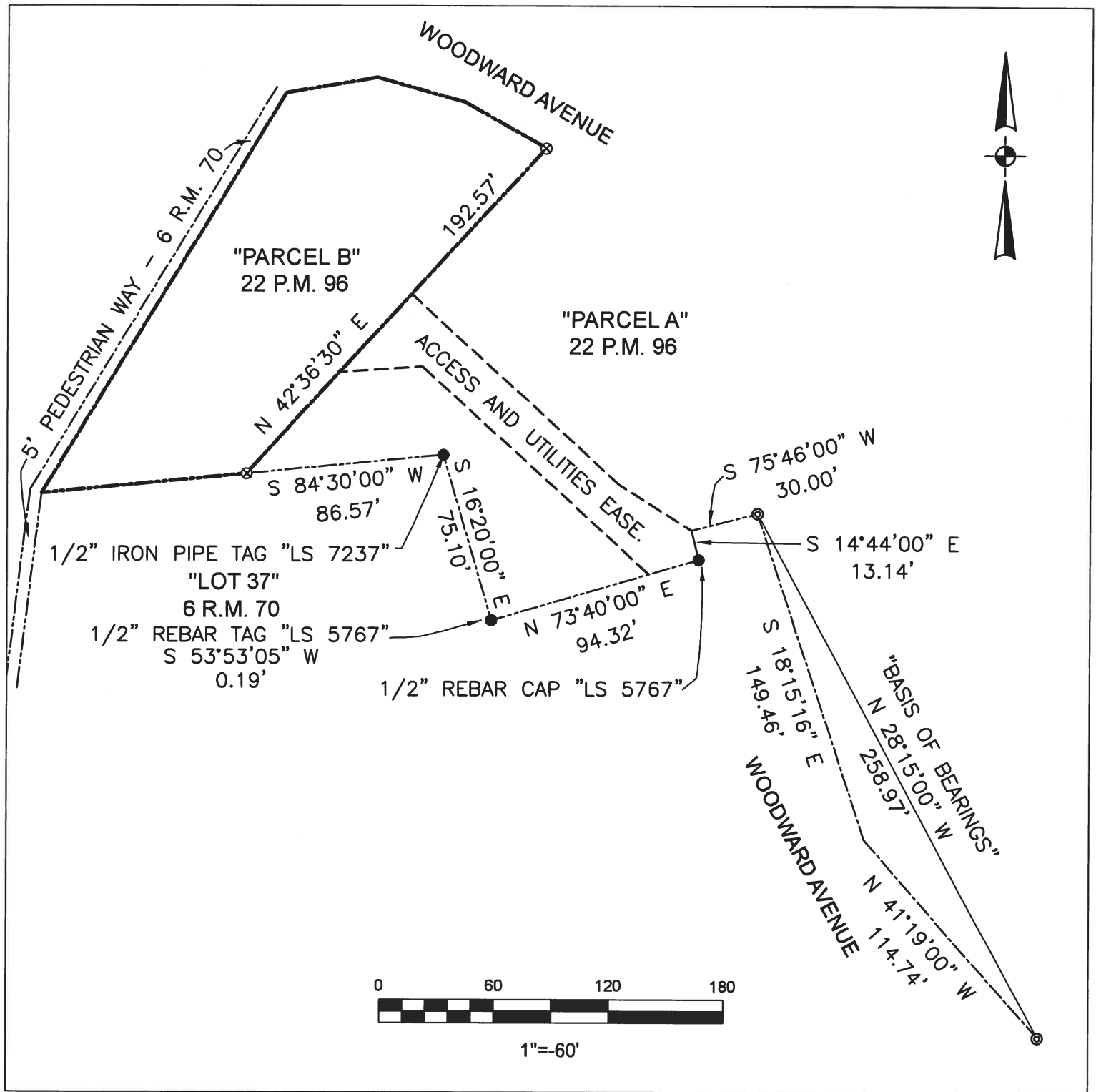
P.L.S 9471**COUNTY SURVEYOR'S STATEMENT**This Corner Record was received January 16, 2023and examined and filed January 18, 2023

Signed

P.L.S. 8176 No. 8176Title County Surveyor

County Surveyor's Comment





## LEGEND

- ⊙ STREET MONUMENT WITH 3" BRASS DISK AND PUNCH
- FOUND MONUMENT AS NOTED
- ⊗ 1/2" REBAR SET WITH PINK CAP "PLS9471"

— PROPERTY BOUNDARY - PM 22 PAGE 96

**BASIS OF BEARINGS:**  
THE BASIS OF BEARINGS OF  
THIS SURVEY IS N28°15'00"E  
BETWEEN FOUND  
MONUMENTATION PER PM 22  
PAGE 96.

## CORNER RECORD

LANDS OF RUSSELL D. CROCE  
(DN: 97-020616 APN: 064-192-31)  
PARCEL B, PM 22 AT PAGE 96

SAUSALITO  
MARIN  
COUNTY CALIFORNIA

CAPSTONE LAND SURVEYING, LLP

926A DIABLO AVENUE, #526  
NOVATO CA 94947  
(415)493-8713