

**CORNER RECORD**

City of Sausalito  
County of Marin, California

Vicinity of APN 064-191-12

Brief Legal Description: Monument Reset, Nail and Shiner at the centerline of Easterby Street with the intersection of the southwesterly line of Pearl Street extended as set per that certain Record of Survey Recorded in Book 11 OS 52, Marin County Records.

**CORNER TYPE**

**COORDINATES**

Government Corner   
Meander   
Rancho   
Date of Survey: 07/28/16

Control   
Property   
Other

*(Optional)*

N. \_\_\_\_\_  
E. \_\_\_\_\_  
Zone \_\_\_\_\_ Datum \_\_\_\_\_  
Elev. \_\_\_\_\_

Corner --Left as found      Found and tagged      Established      Reestablished X      Rebuilt

Identification and type of corner found: Evidence used to identify or procedure used to establish or reestablish the corner.

This monument was replaced based on found monuments shown on that certain Record of Survey recorded in Book 11 OS 52 and later re-surveyed and shown on 36 OS 77 Marin County Records. There is no record of the date this monument was destroyed.

A Description of the physical condition of the monument as found and as set or reset.

See Sheet two.



**SURVEYOR'S STATEMENT**

This Corner Record was prepared by me or under my direction in conformance with the Professional Land Surveyor's Act on August 1, 2016

Signed Linda A. Carruthers P.L.S. 7053

**COUNTY SURVEYOR'S STATEMENT**

This Corner Record was received AUGUST 1 2016 and examined and filed AUGUST 1, 2016.

Signed Richard G. Simonitch Title County Surveyor



County Surveyor's Comments \_\_\_\_\_

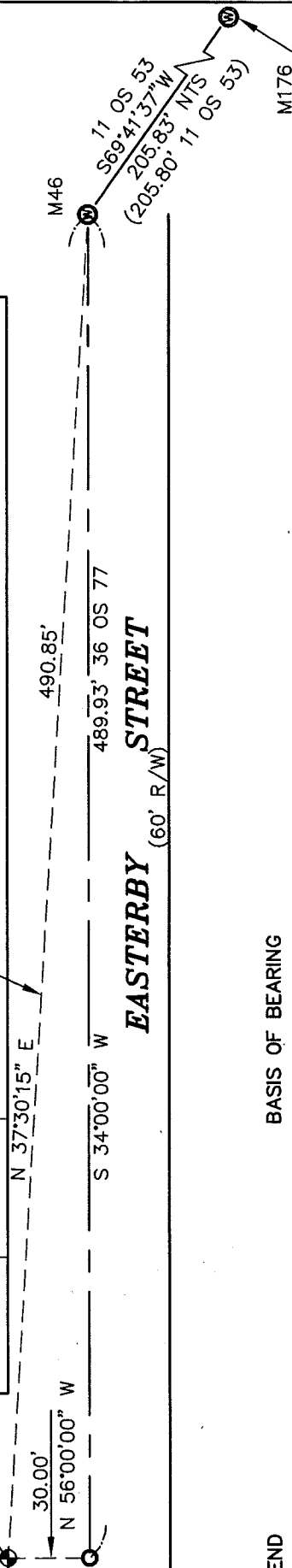
11 OS 52  
APN 064-191-12

**PEARL STREET**  
(60' R/W)

1 RM 18  
BLOCK 43

36 OS 77

BASIS OF BEARING



**BRIDGEWAY**  
(R/W VARIES)

M46

489.93' 36 OS 77

490.85'

**EASTERBY STREET**  
(60' R/W)

S 34°00'00\" W

N 37°30'15\" E

N 56°00'00\" W

30.00'

S69°41'37\" W  
(205.83' NTS)

11 OS 53

11 OS 53

**LEGEND**

- ⊙ FD STD. CITY OF SAUSALITO MONUMENT
- ⊕ FD NAIL AND TAG RCE 11181
- SET 1" BRASS DISK IN AC

**NOTE**

M234 AS SHOWN ON 14 PM 72 WAS NEVER SET.

**BASIS OF BEARING**

THE BASIS OF BEARING FOR THIS SURVEY IS NORTH 37°30'15" EAST BETWEEN FOUND CITY OF SAUSALITO M46 AND NAIL & TAG RCE 11181 IN TOP OF WALL AS CALCULATED ACCORDING TO 36 OS 77, MARIN COUNTY RECORDS

**MONUMENT RESET  
RESET NAIL & SHINER CL OF  
EASTERBY 11 OS 53**

**LINDA A. CARRUTHERS & ASSOCIATES  
P. O. BOX 2053  
SAUSALITO, CA 94966**

SCALE: 1"=60'  
JOB NO. 16-963CR  
DATE JULY 2016  
SHEET 2 OF 2