

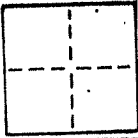
A.P. # 64-181-23

### CORNER RECORD

COUNTY OF MARIN T. \_\_\_\_\_ R. \_\_\_\_\_ MERIDIAN \_\_\_\_\_ CALIFORNIA

CORNER TYPE: GOVT. CORNER  MEANDER  RANCHO  CONTROL  OTHER

CORNER IDENTIFICATION — DATE OF VISIT \_\_\_\_\_ 19\_\_\_\_



CORNER — LEFT AS FOUND  FOUND AND TAGGED  REESTABLISHED OBLITERATED CORNER  REBUILT

PHYSICAL DESCRIPTION OF CORNER FOUND; EVIDENCE AND METHOD USED TO IDENTIFY OR REESTABLISH

PHYSICAL DESCRIPTION OF MONUMENTS REBUILT OR PERPETUATED

SET I.P., WESTERLY LINE PCL 1, PARCEL MAP BOOK 14 PAGE 3 IN CITY OF SAUSALITO

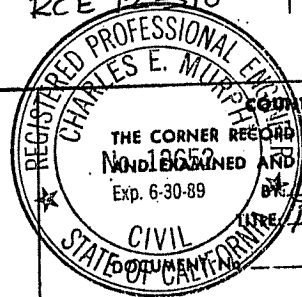
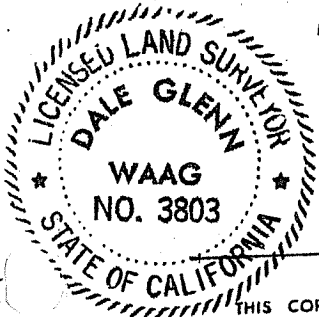
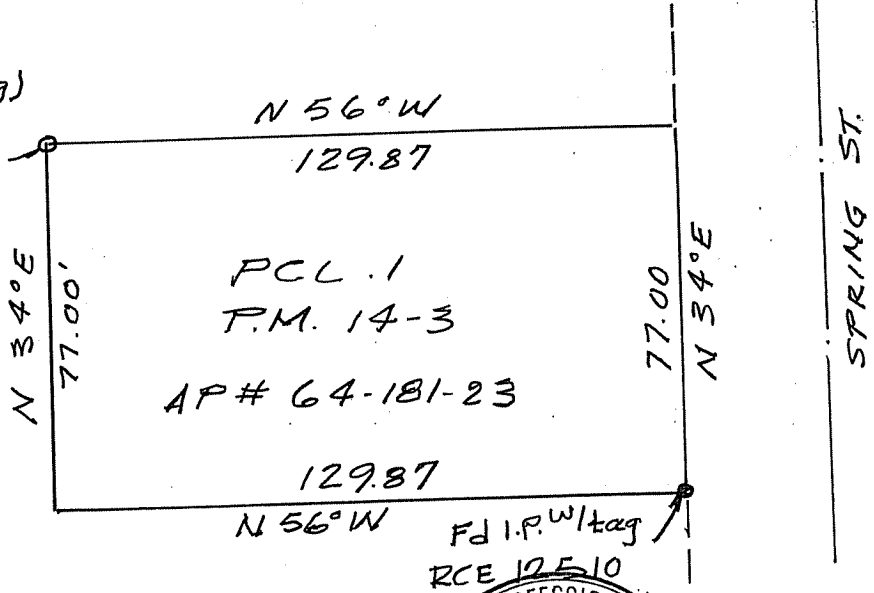
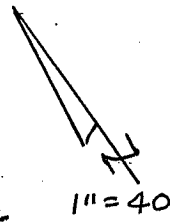
CALIFORNIA COORDINATE SYSTEM ORDER: FIRST  SECOND  THIRD  STATION \_\_\_\_\_ STATION \_\_\_\_\_

STATIONS USED: NGS (USC & GS)  STATE  COUNTY  OTHER  EASTINGS (X) \_\_\_\_\_

ZONE \_\_\_\_\_ ELEVATION \_\_\_\_\_ NORTHINGS (Y) \_\_\_\_\_

SKETCH: (Include reference tie or witness points, remarks and topo of area)

Fd. hub (no tag)  
replaced with  
I.P. w/tag L.S. 3803



**SURVEYOR'S CERTIFICATE**

THIS CORNER RECORD WAS PREPARED BY ME OR UNDER MY DIRECTION IN CONFORMANCE WITH THE LAND SURVEYORS ACT ON AUGUST 10 1987

SIGNED: D. M. Waag

L.S. or R.C.E. No.: L.S. 3803

EXP. 6-30-88

COUNTY SURVEYOR'S CERTIFICATE

THE CORNER RECORD WAS RECEIVED AUG 14 1987

AND FILED AUG 17 1987

BY Charles E. Murphy

TITLE Deputy County Surveyor

STATEMENT ON BACK OF SHEET YES  NO

#5263

SEAL

RECEIVED

AUG 11 1987

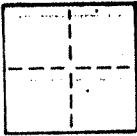
CORNER RECORD

Marin County Public Works

COUNTY OF MARIN T. \_\_\_\_\_ R. \_\_\_\_\_ MERIDIAN \_\_\_\_\_ CALIFORNIA

CORNER TYPE: GOVT. CORNER  MEANDER  RANCHO  CONTROL  OTHER

CORNER IDENTIFICATION - DATE OF VISIT \_\_\_\_\_ 19\_\_\_\_



CORNER - LEFT AS FOUND  FOUND AND TAGGED  REESTABLISHED OBLITERATED CORNER  REBUILT

PHYSICAL DESCRIPTION OF CORNER FOUND; EVIDENCE AND METHOD USED TO IDENTIFY OR REESTABLISH

PHYSICAL DESCRIPTION OF MONUMENTS REBUILT OR PERPETUATED

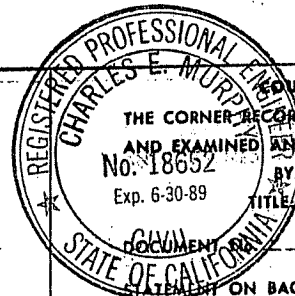
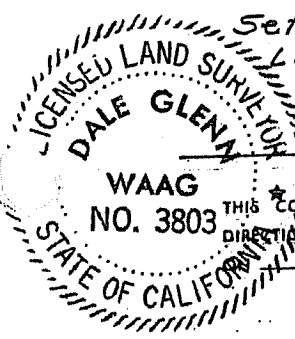
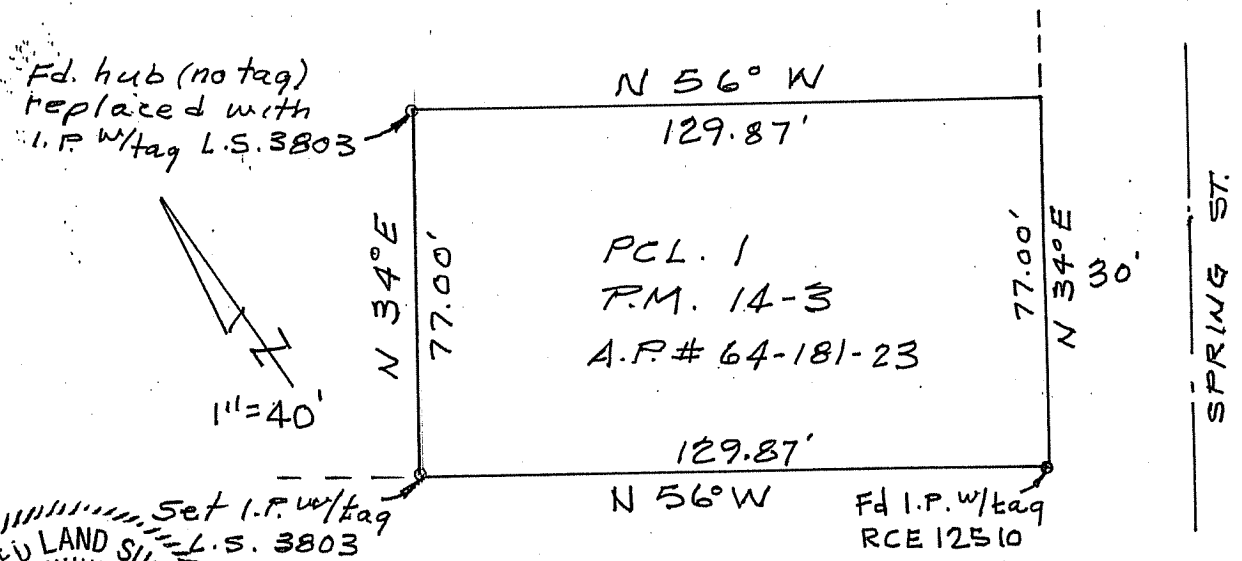
SET I.P., WESTERLY LINE PCL 1, PARCEL MAP  
BOOK 14 PAGE 3 IN CITY OF SAUSALITO

CALIFORNIA COORDINATE SYSTEM ORDER: FIRST  SECOND  THIRD

STATIONS USED: NGS (USC & GS)  STATE  COUNTY  OTHER  STATION \_\_\_\_\_ STATION \_\_\_\_\_

ZONE \_\_\_\_\_ ELEVATION \_\_\_\_\_ NORTHINGS (Y) \_\_\_\_\_ EASTINGS (X) \_\_\_\_\_

SKETCH: (Include reference tie or witness points, remarks and topo of area)



**SURVEYOR'S CERTIFICATE**

THIS CORNER RECORD WAS PREPARED BY ME OR UNDER MY DIRECTION IN CONFORMANCE WITH THE LAND SURVEYORS ACT

SIGNED: D.A. Waag

L.S. or R.C.E. No.: LS 3803

EXP. 6-30-88

**COUNTY SURVEYOR'S CERTIFICATE**

THE CORNER RECORD WAS RECEIVED Aug 11 1987

AND EXAMINED AND FILED Aug 17 1987

No. 18652 BY Charles E. Murphy

Exp. 6-30-89 TITLE Deputy County Surveyor

DOCUMENT NO. \_\_\_\_\_

REMARKS ON BACK OF SHEET

YES  NO

# 5663

SEAL