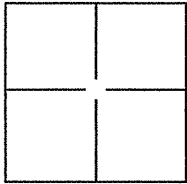


CORNER RECORD

Document Number APN 64-152-21
County of Marin, California

City of Sausalito

Brief Legal Description Parcel 2 - 1 PM 27



CORNER TYPE

Government Corner Control
Meander Property
Rancho Other

Date of Survey 07/26/11

COORDINATES(Optional)

N. _____
E. _____
Zone _____ NAD27 NAD83
NAD83 Epoch _____
Elev. _____
Vert. Datum: NGVD29 NADV88
Meas. Units: Metric Imperial

Corner - Left as found Found and tagged Established Reestablished Rebuilt

Identification and type of corner found: Evidence used to identify or procedure used to establish or reestablish the corner:

Found Lead plug & Brass Tag LS 2654 and 3/4" Iron Pipe per 1 PM 27. See reverse.

A description of the physical condition of the monument as found and as set or reset: _____

Set 3/4"x 24" Iron Pipe tagged LS 7973. See reverse.

SURVEYOR'S STATEMENT

This Corner Record was prepared by me or under my direction in conformance with the Land Surveyor's Act on Sept. 6th, 2011.

Signed [Signature] P.L.S. or R.C.E. No.: LS7973



COUNTY SURVEYOR'S STATEMENT

This Corner Record was received SEPTEMBER 12, 2011 and examined and filed SEPTEMBER 28, 2011.

Signed [Signature] P.L.S. or R.C.E. No.: 7128

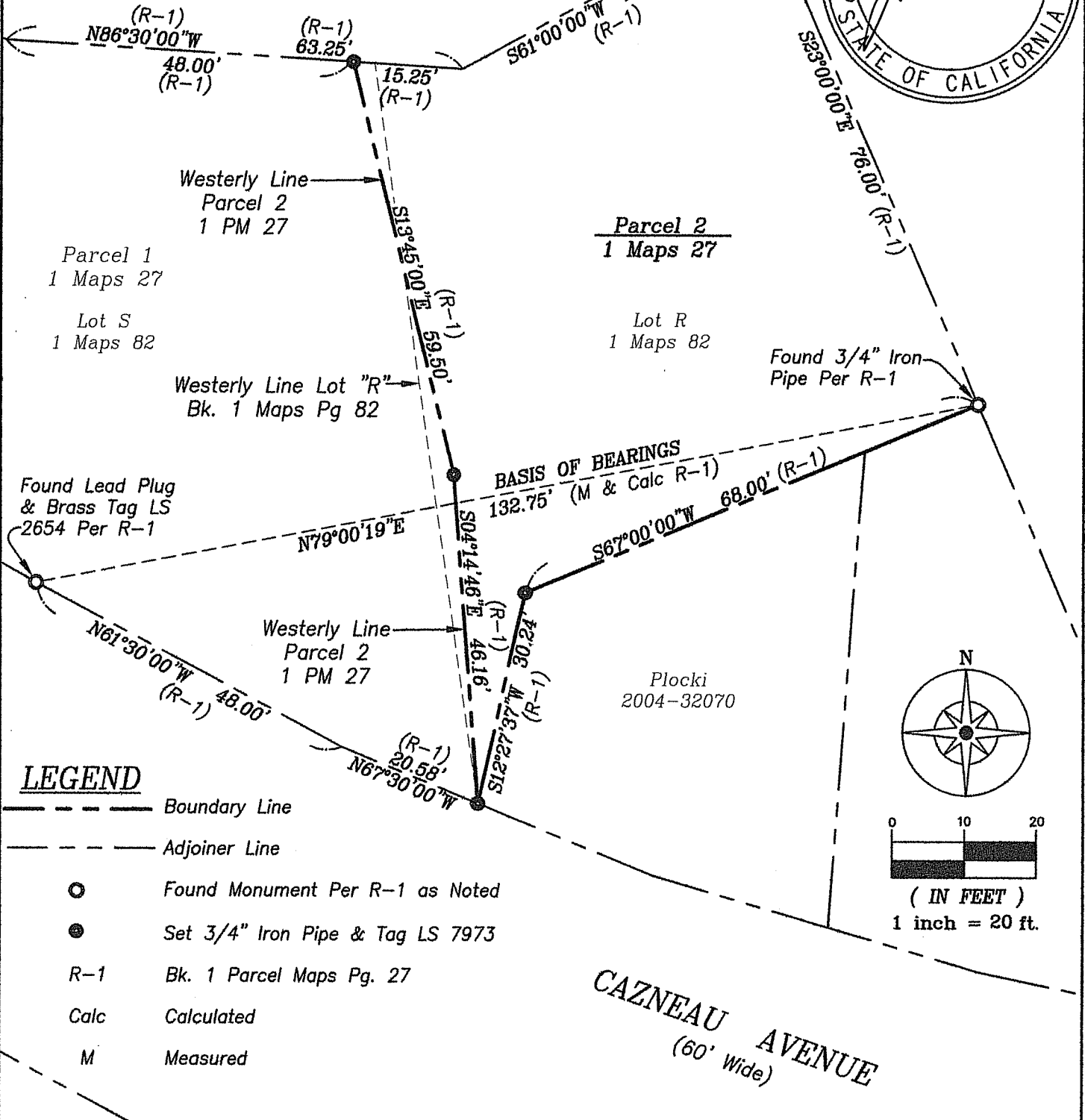
Title COUNTY SURVEYOR

County Surveyor's Comment _____



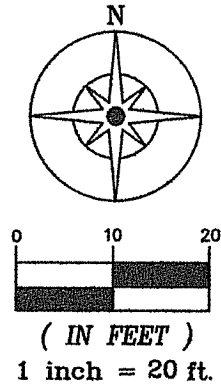


MARIE STREET
(60' Wide)

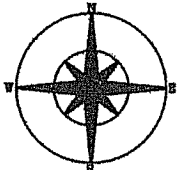


LEGEND

- Boundary Line
- Adjoiner Line
- Found Monument Per R-1 as Noted
- Set 3/4" Iron Pipe & Tag LS 7973
- R-1 Bk. 1 Parcel Maps Pg. 27
- Calc Calculated
- M Measured



Ty Hawkins LS 7973
3636 Oak Canyon Ln.
Vacaville CA. 95688
Ph. 707-974-9890
Fx. 707-447-7171



Corner Record Plat
A Portion of Parcel 2
Bk. 1 Parcel Maps Pg. 27
City of Sausalito
Marin County California

Date: 07/26/11	Scale: 1"=20'
Job #: 11062	
	Sheet 2
	of 2