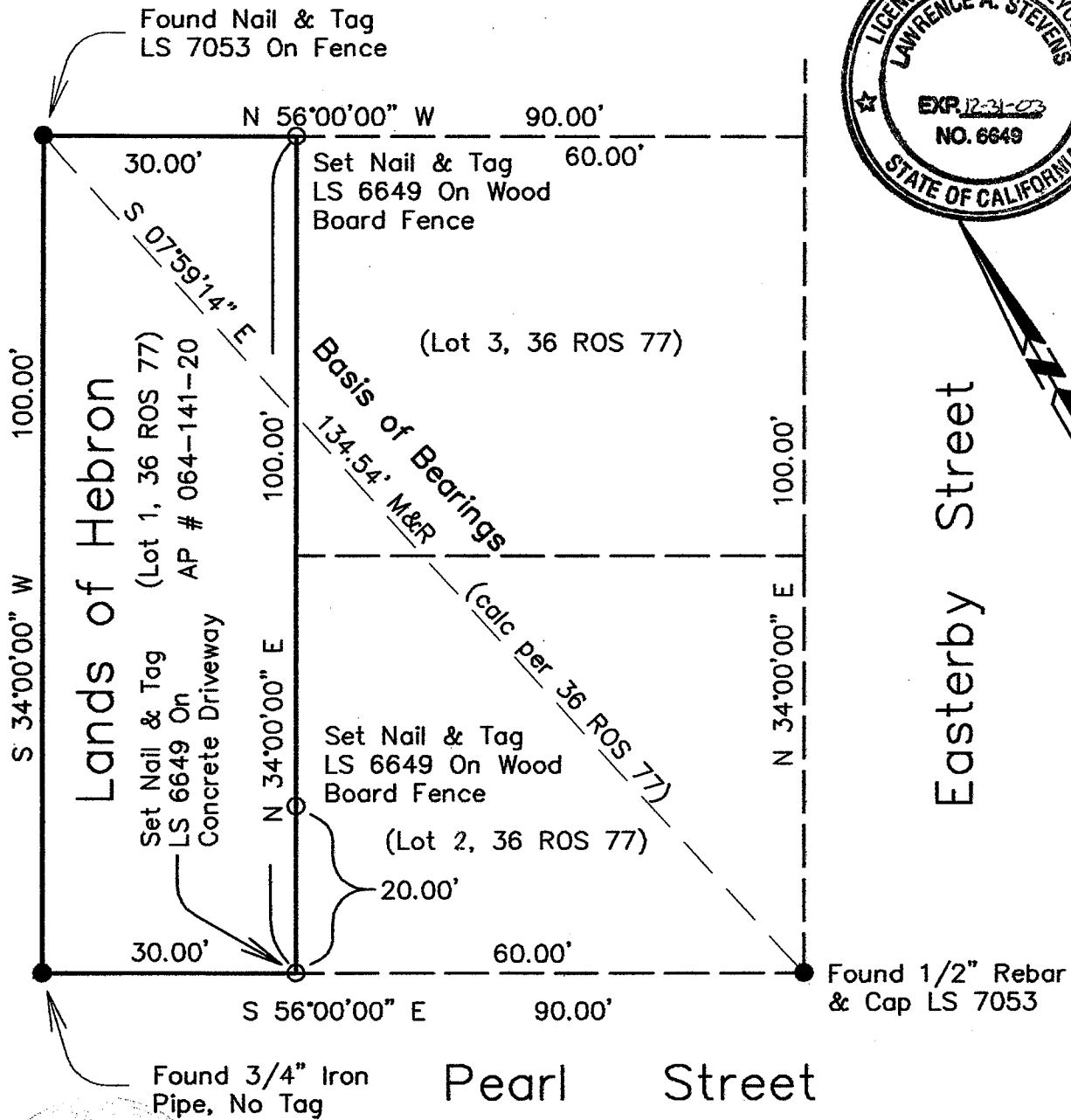


All distances shown are in feet and decimals thereof



Basis of Bearings being the calculated line between found monuments as shown on 36 ROS 77, M.C.R. Bearing of S 07°59'14" E

Property lines shown hereon are based upon a field survey performed by L.A. Stevens & Assoc. and are shown based upon found monumentation and record information as shown on 36 ROS 77, M.C.R. Monuments located and verified on August 8, 1999 and monuments set on June 3, 2000

### Corner Record Plat Lands of Hebron

(Lot 1, 36 ROS 77)  
18 Pearl Street  
Sausalito Marin County California  
Scale: 1" = 20' June 3, 2000

**L.A. Stevens & Associates**  
Professional Land Surveyors \* (415) 382-8321  
1132 Bel Marin Keys Blvd. \* Novato, CA 94949  
Job # 99-287 Page 1 Of 1

*Lawrence A. Stevens*  
Lawrence A. Stevens, PLS 6649  
my license expires 12/31/03